



**FLUTOPEDIA**  
*an Encyclopedia*  
*for the*  
**NATIVE**  
**AMERICAN**  
**FLUTE**

# BLANK NAF TABLATURE

**U. S. Letter (8½" x 11") size paper - Mouth-end Down**

This PDF file has templates for writing or transcribing sheet music for the Native American Flute. Each page has a blank staff for writing music in Nakai Tablature as well as finger diagrams with open holes that can be filled in by hand.

Versions are included for six-hole flutes, five-hole flutes, Hopi-style five-hole flutes, three variations of four-hole flutes (Mojave, Yuma, and “uneven”), and Papago three-hole flutes with and without a thumb hole. For each version has a small and a large variation, and two pages are provided for each: a “first page” with room for the title and author, and a “second page” that can be used for subsequent pages.

This PDF is part of a collection of Native American Flute resources available at the web site <http://www.Flutopedia.com/>. The Flutopedia web site includes, among many other things, an extensive set of finger diagram fonts for engraving sheet music that are similar to the finger diagrams in this document. All fonts have been embedded in this PDF file, so that it should display identically on various systems.

You are free to distribute unmodified versions of this document.

If you have any questions about this document or issues with its distribution, please visit <http://www.Flutopedia.com/>, which has information on how to contact us.

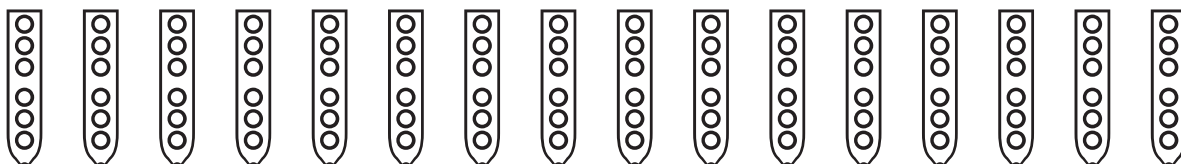
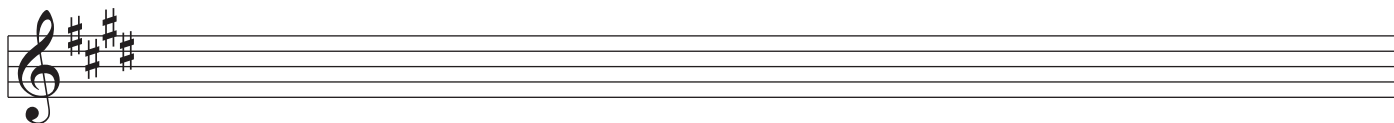
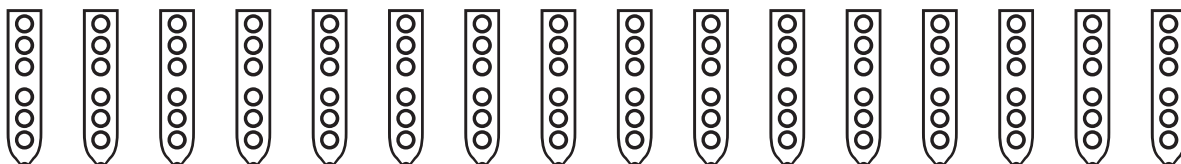
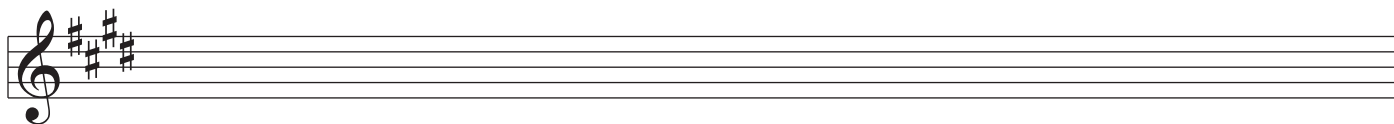
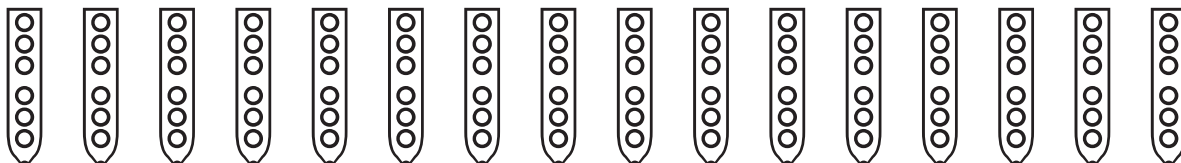
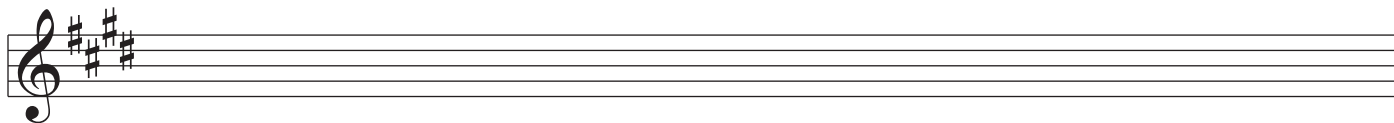
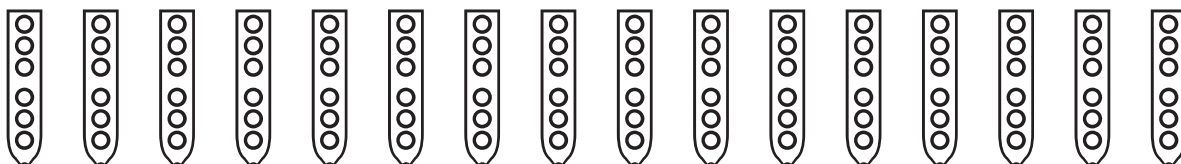
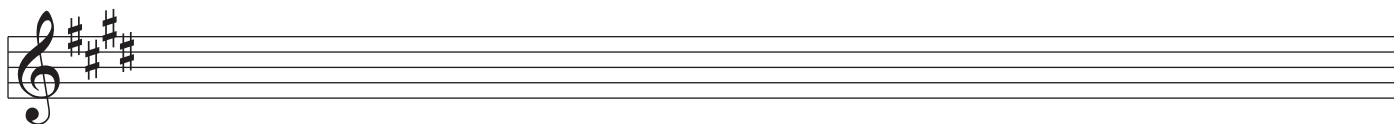
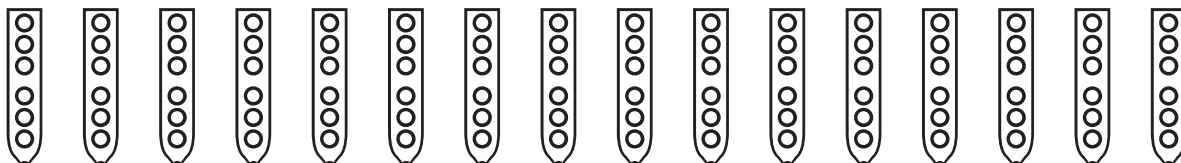
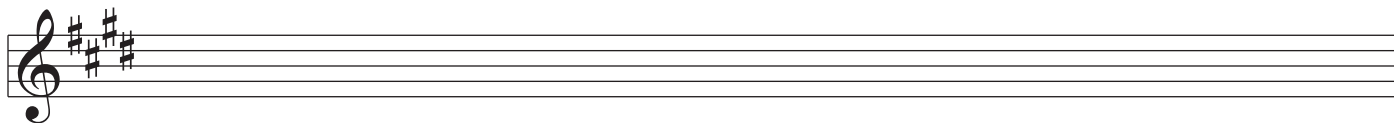
This document was last updated October 17, 2011 by Clint Goss [clint@goss.com]

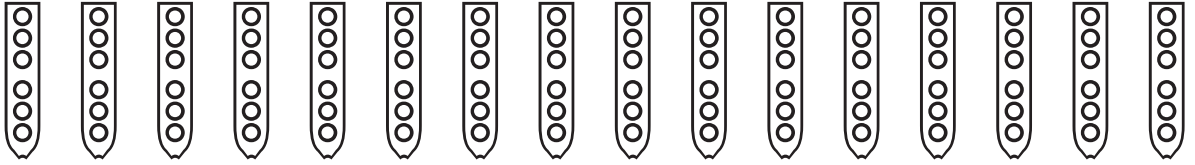
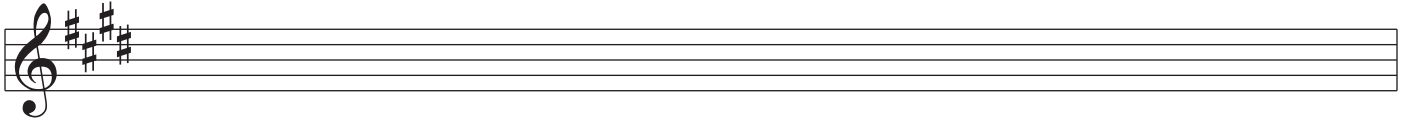
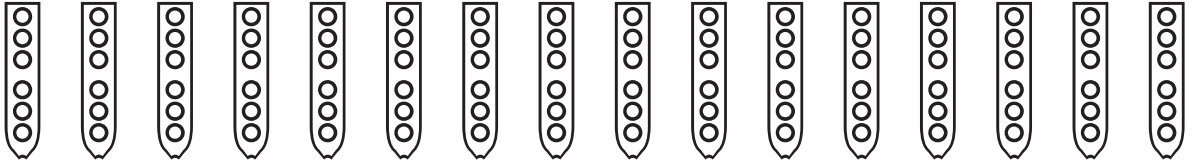
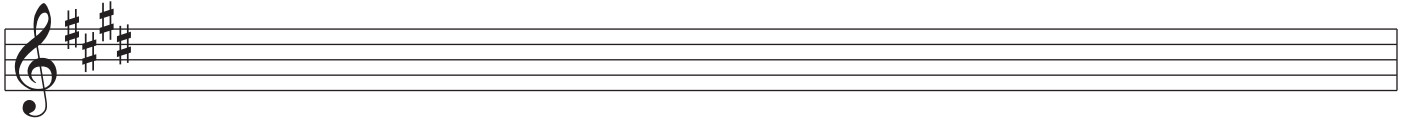
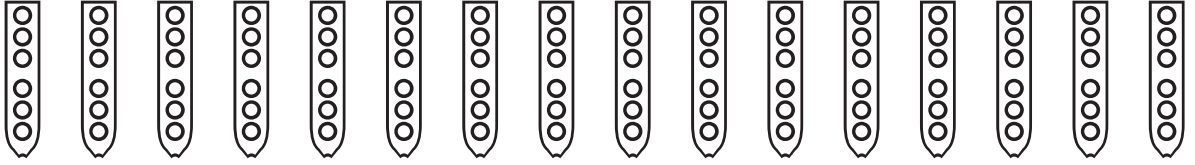
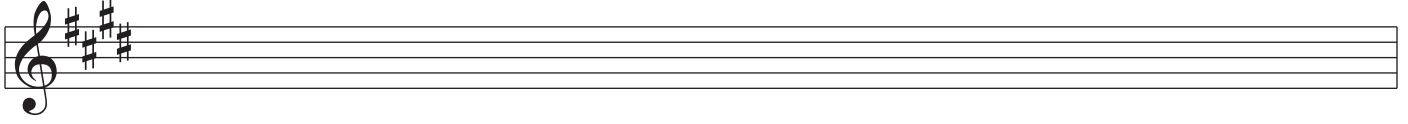
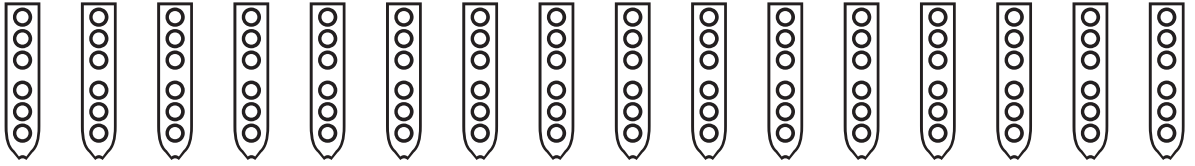
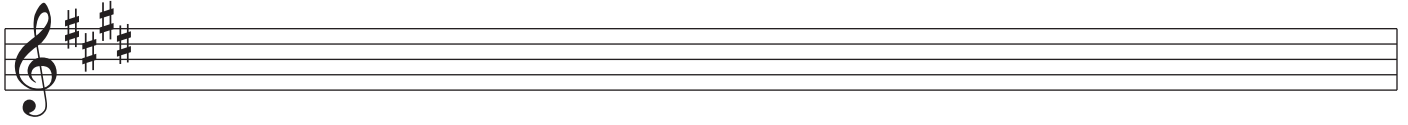
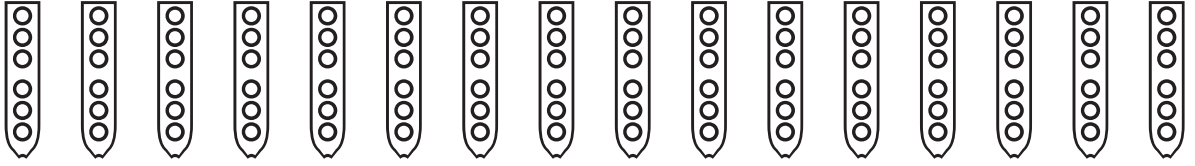
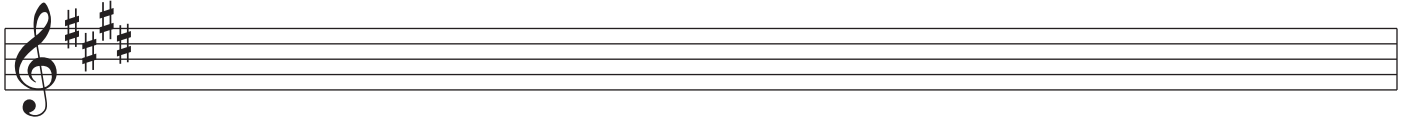
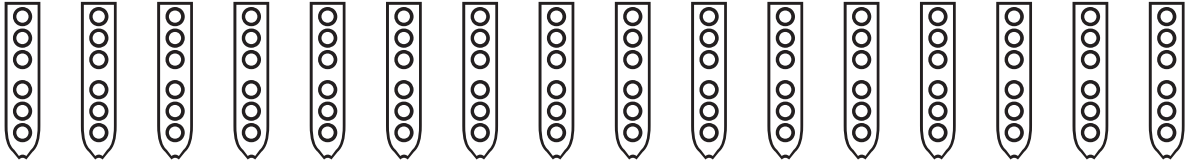
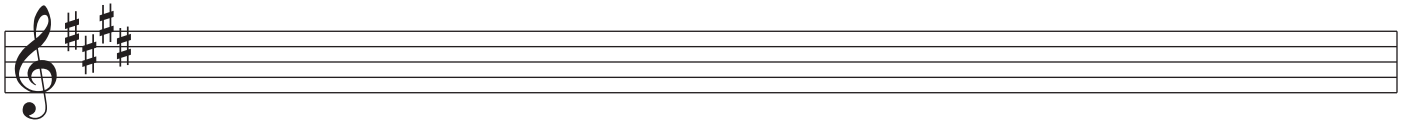


---

Nakai Tablature for Native American Flute

---

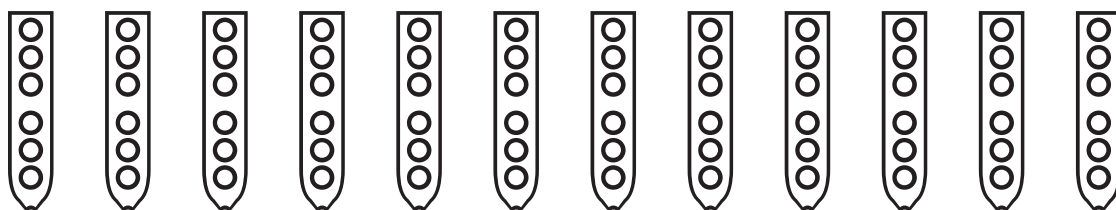
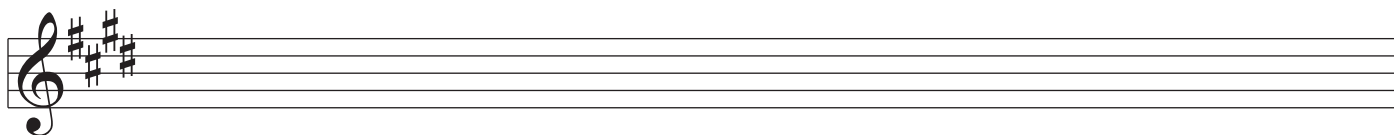
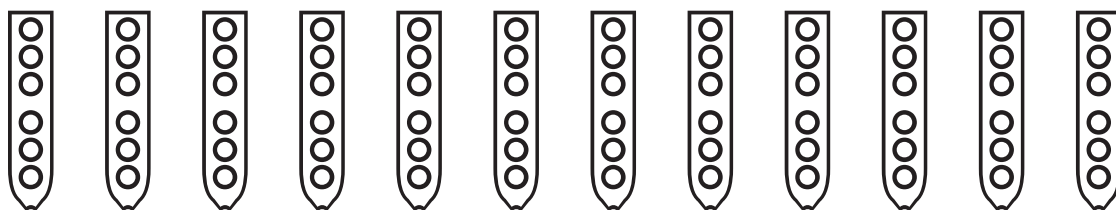
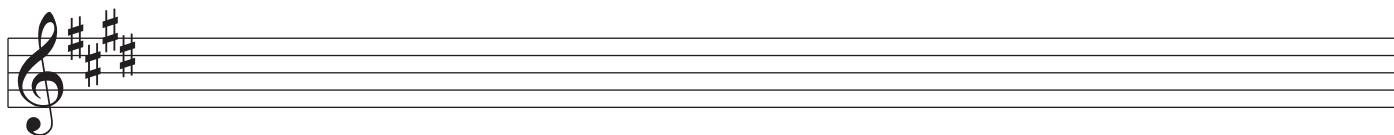
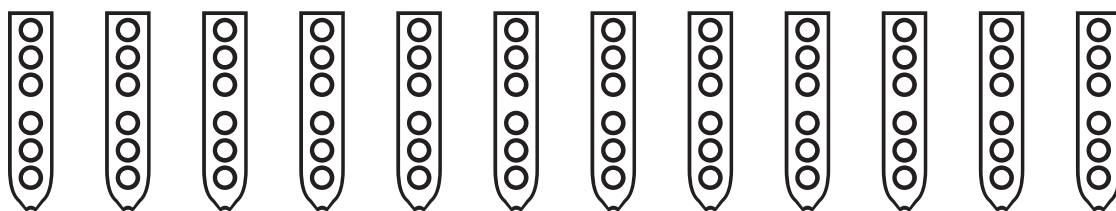
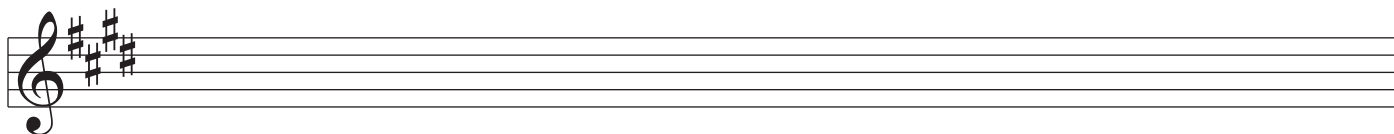
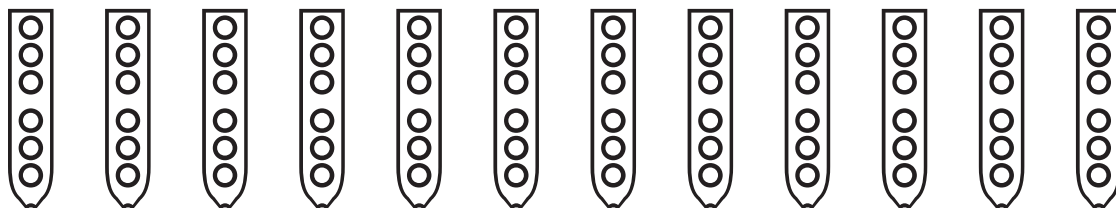
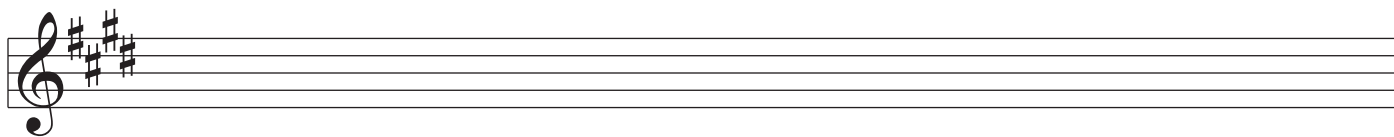


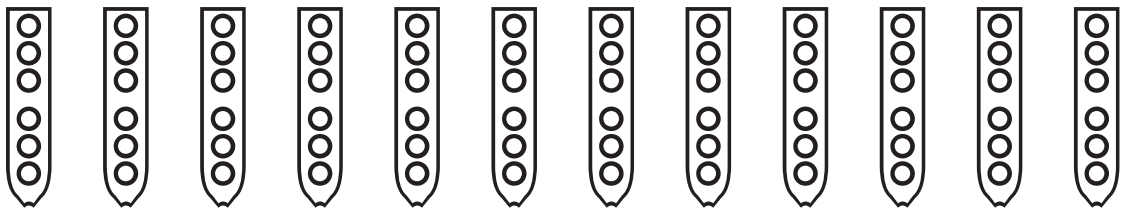
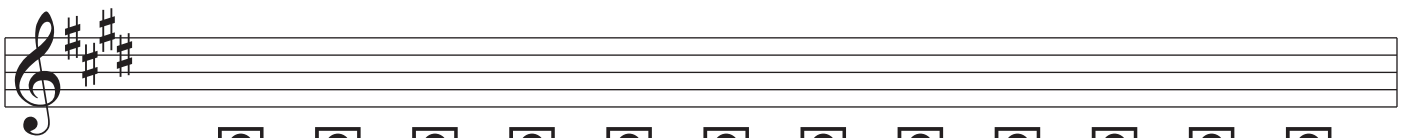
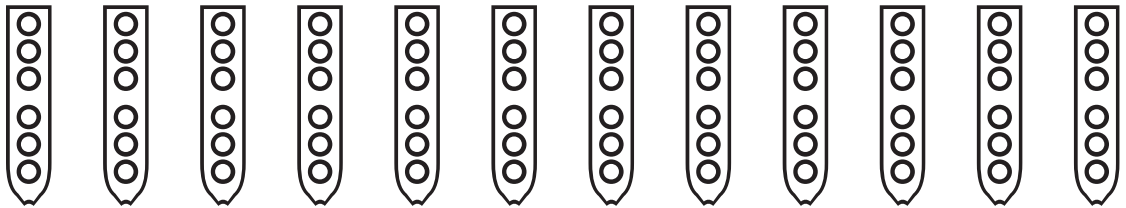
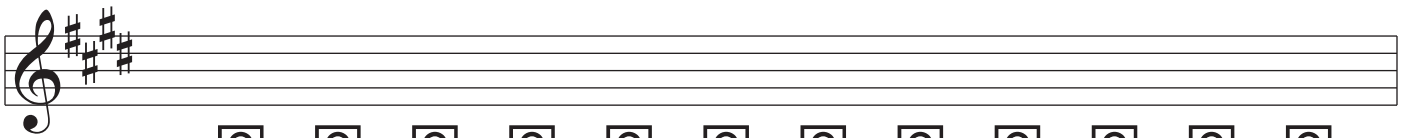
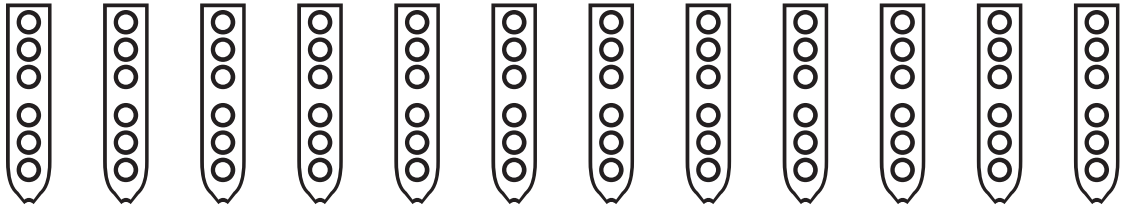
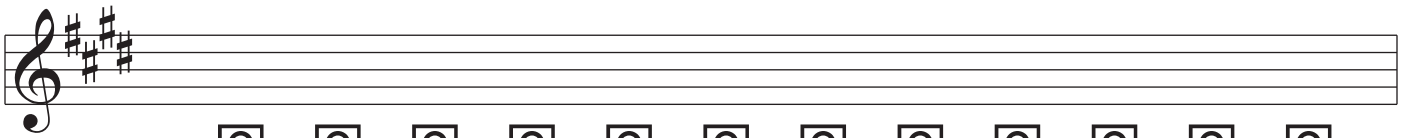
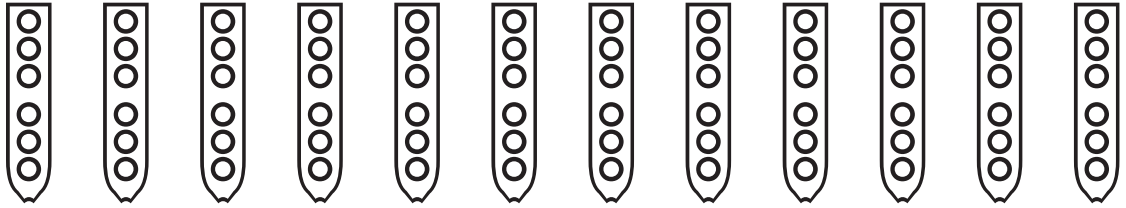
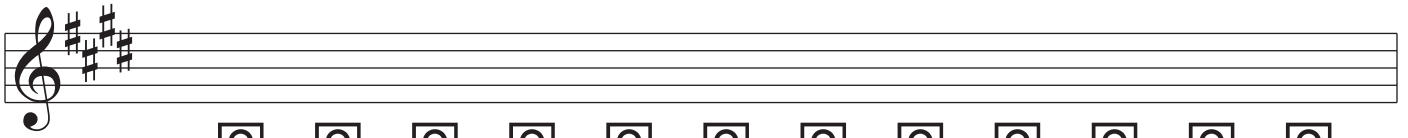
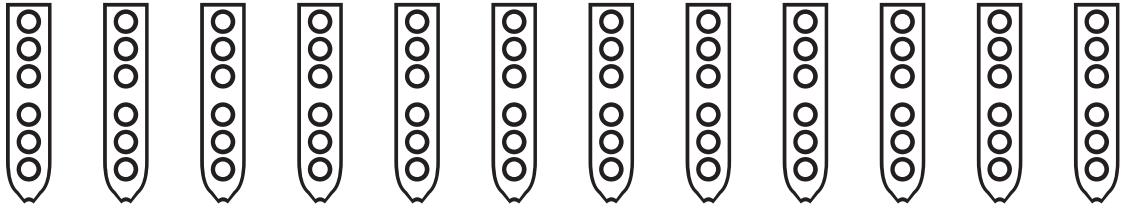
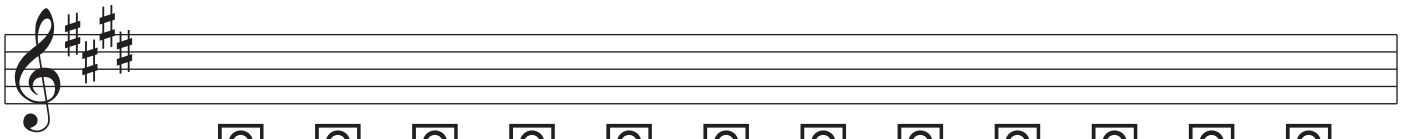


---

Nakai Tablature for Native American Flute

---

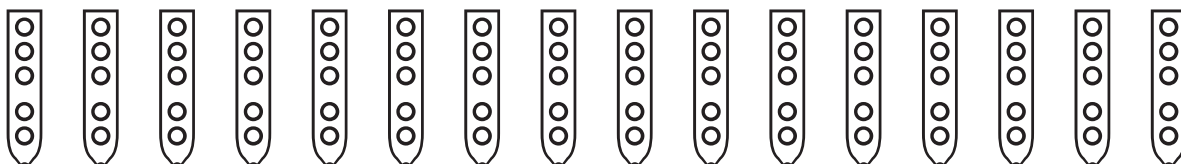
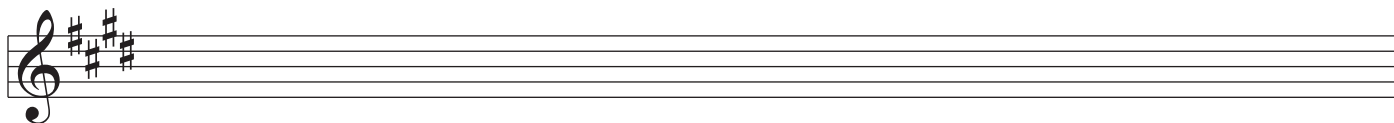
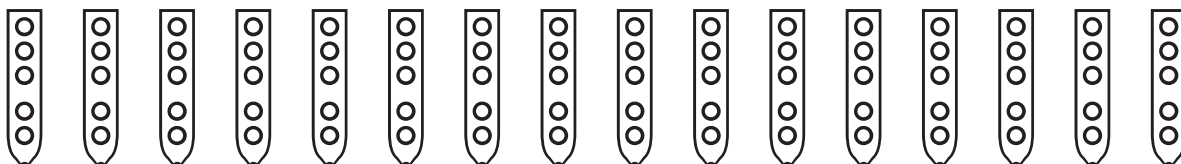
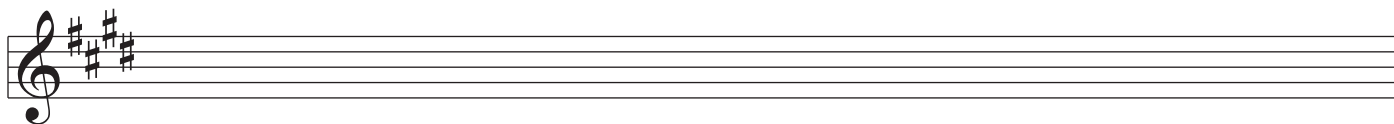
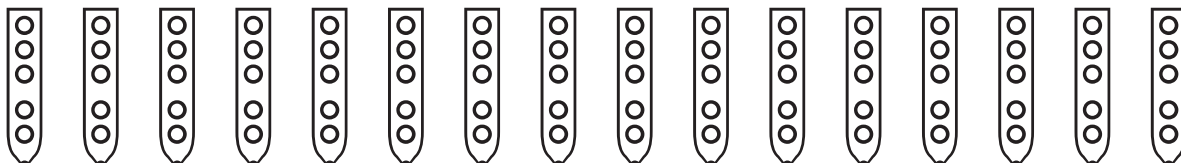
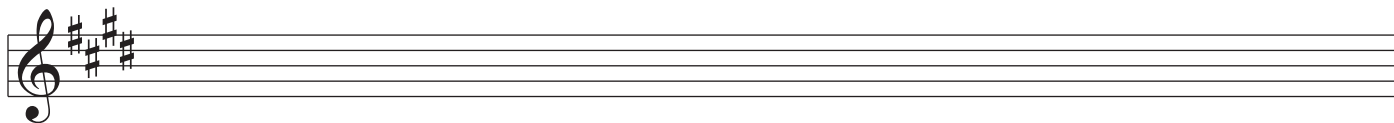
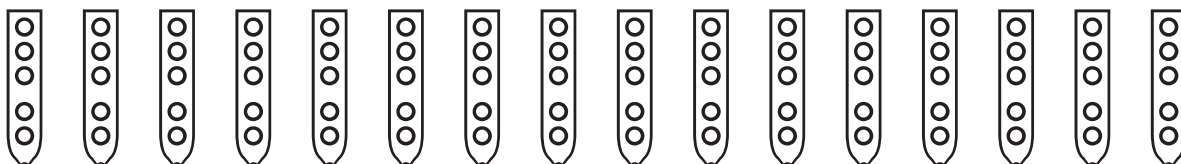
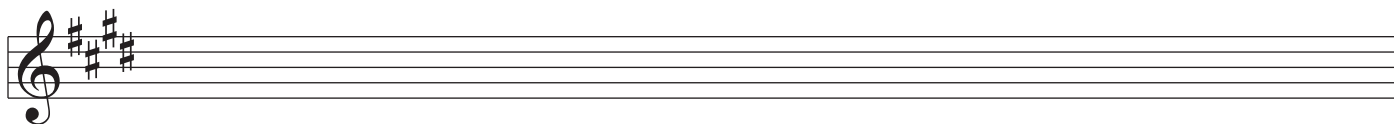
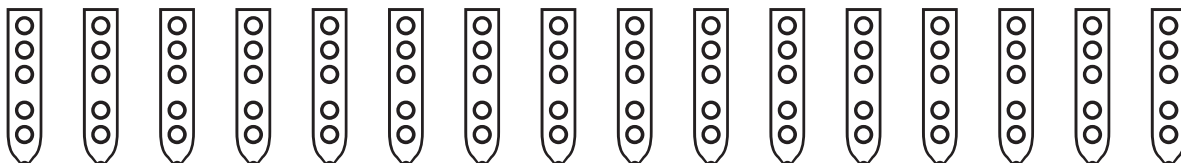
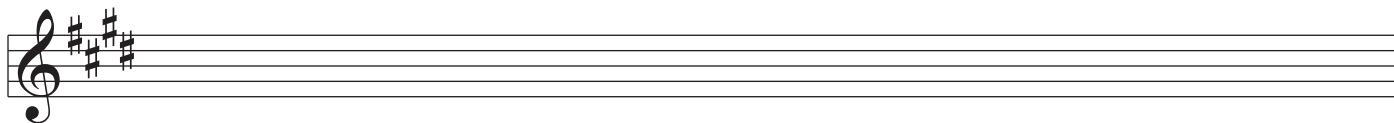


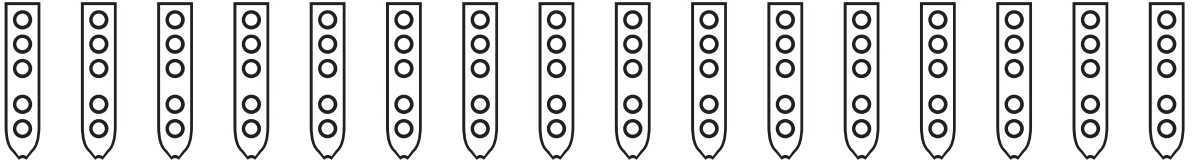
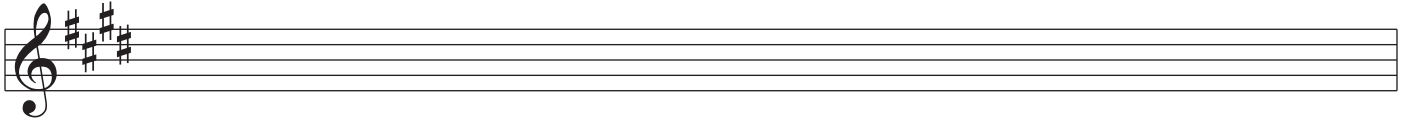
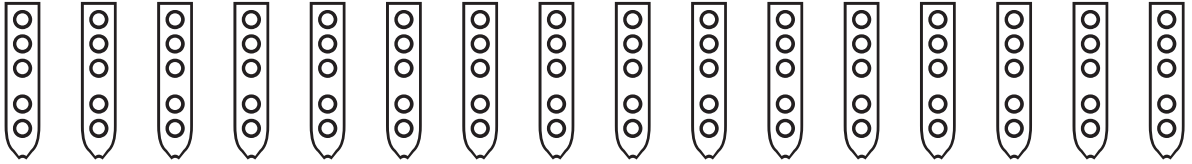
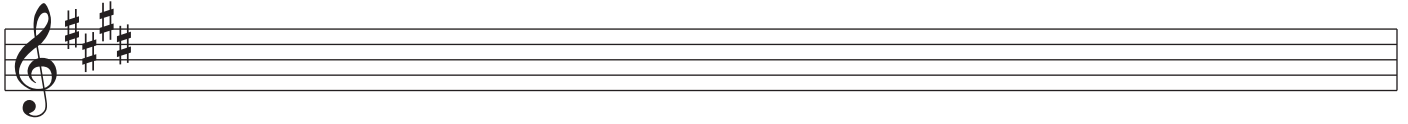
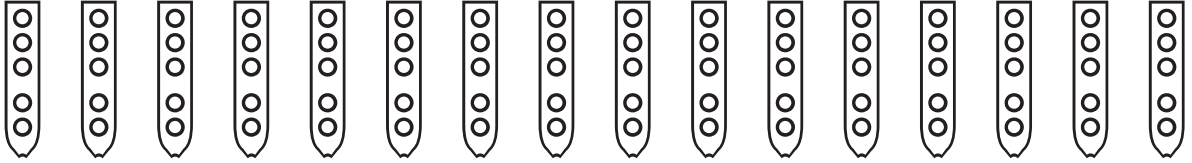
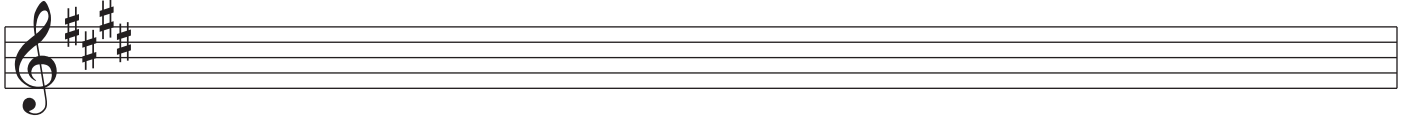
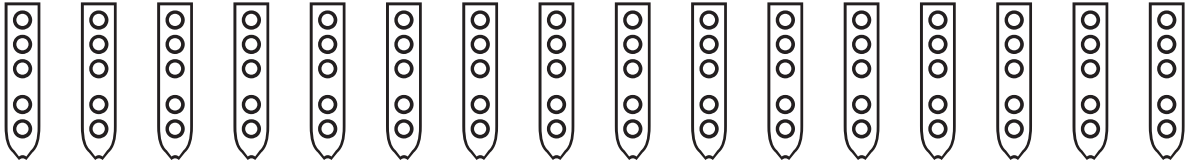
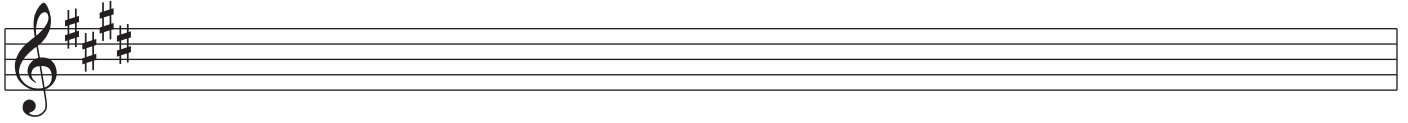
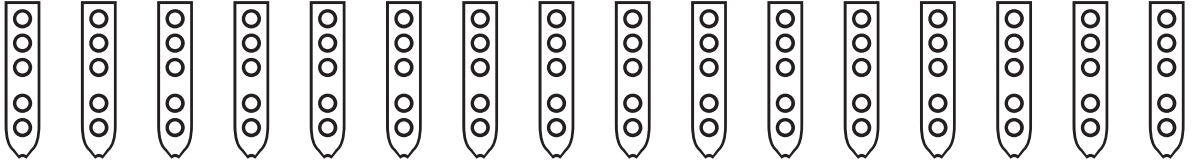
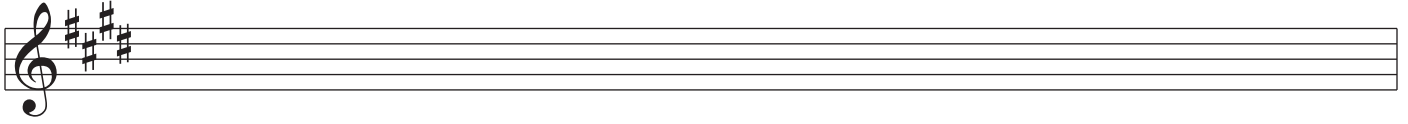
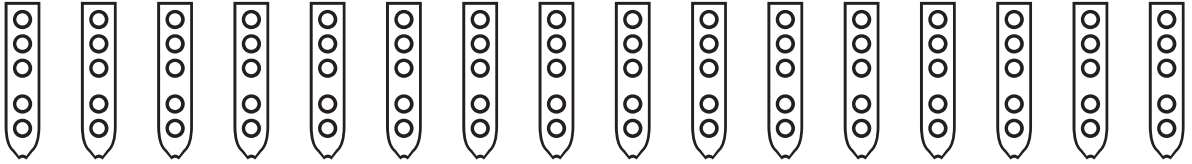
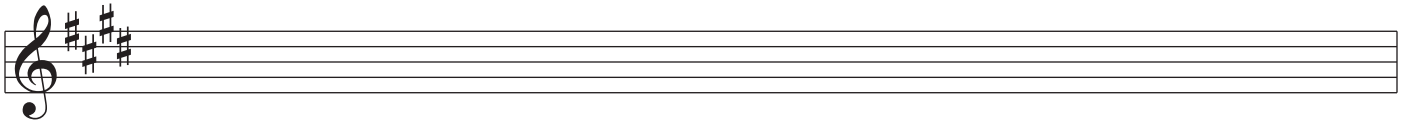


---

Nakai Tablature for Native American Flute

---

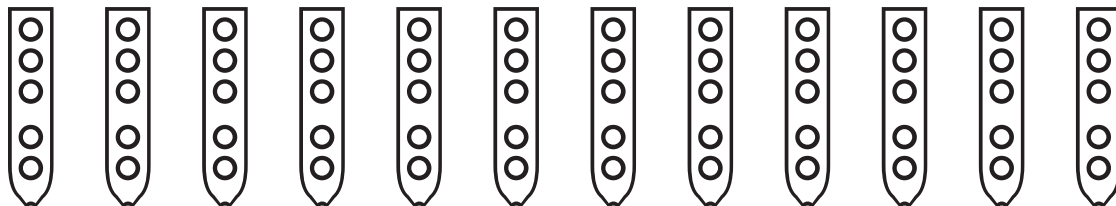
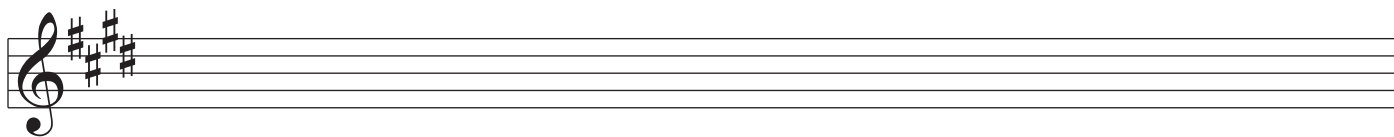
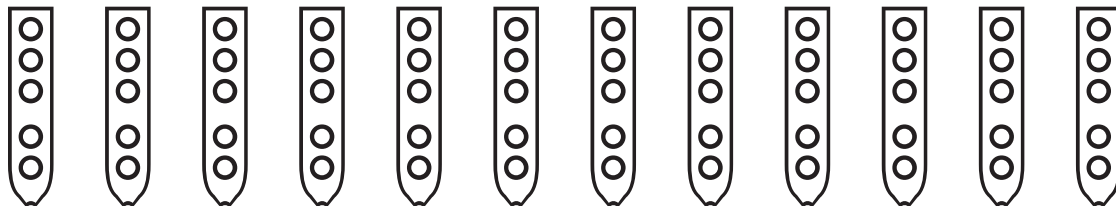
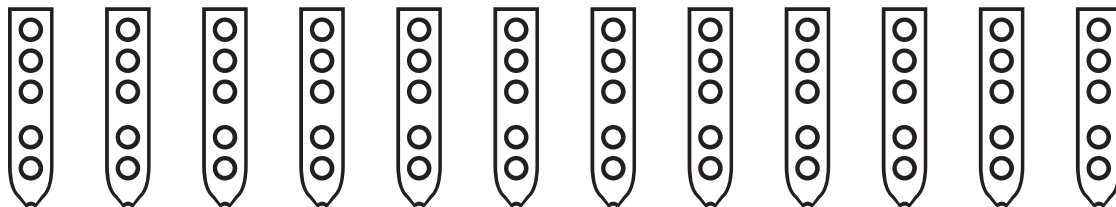
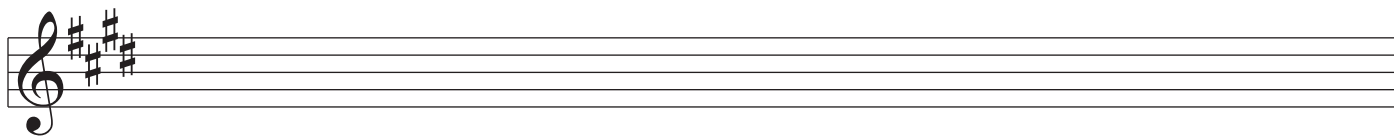
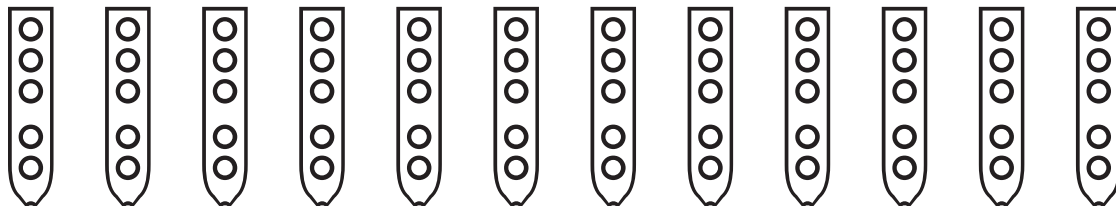
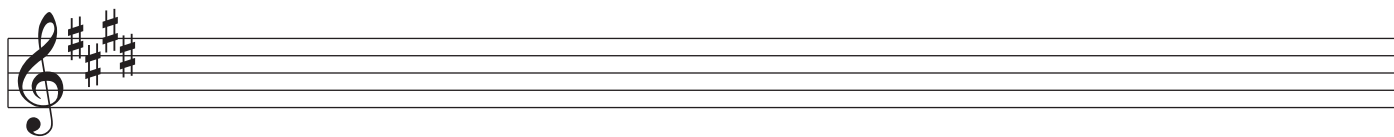




---

Nakai Tablature for Native American Flute

---





A musical staff with a treble clef and a key signature of three sharps (F#, C#, G#). Below the staff are 12 vertical ovals, each containing six small circles arranged in two columns of three, representing fingerings for the notes on the staff.

A musical staff with a treble clef and a key signature of three sharps (F#, C#, G#). Below the staff are 12 vertical ovals, each containing six small circles arranged in two columns of three, representing fingerings for the notes on the staff.

A musical staff with a treble clef and a key signature of three sharps (F#, C#, G#). Below the staff are 12 vertical ovals, each containing six small circles arranged in two columns of three, representing fingerings for the notes on the staff.

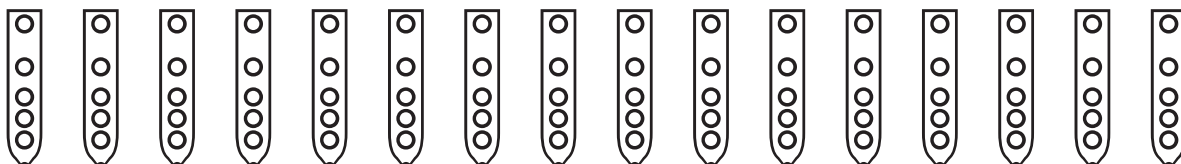
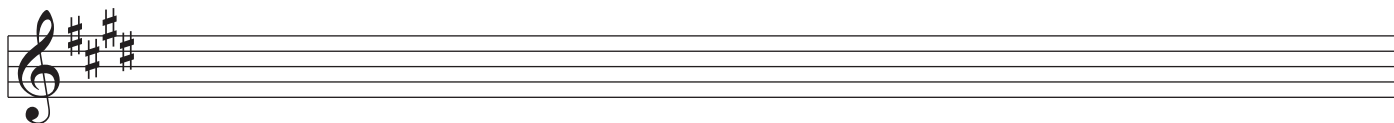
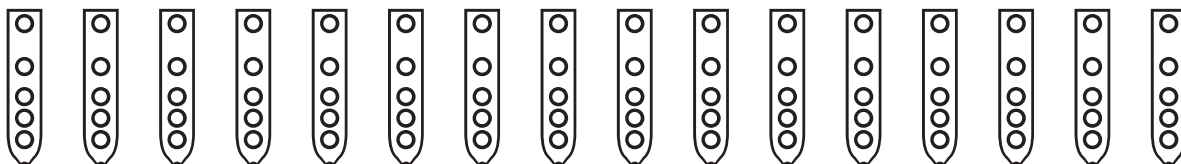
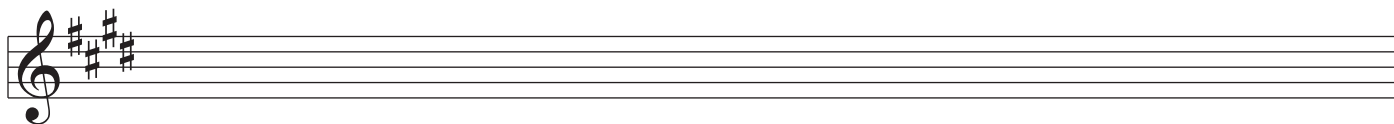
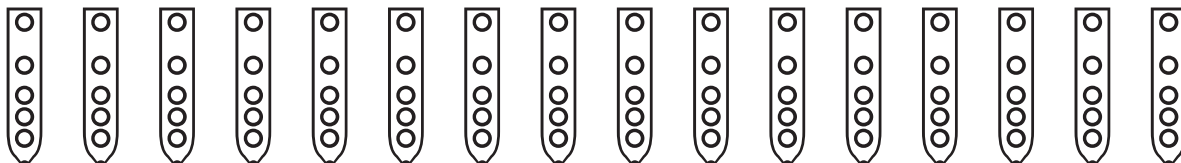
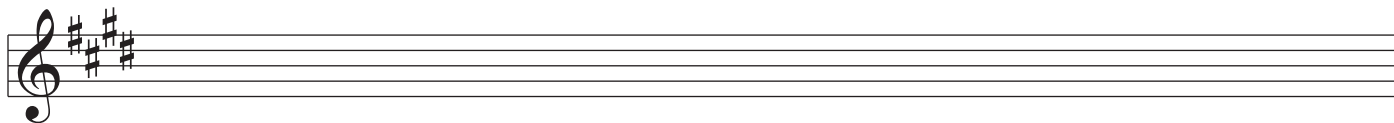
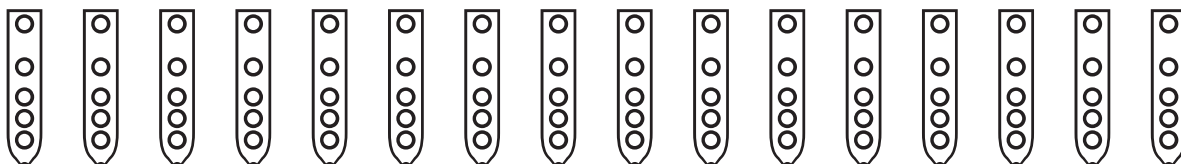
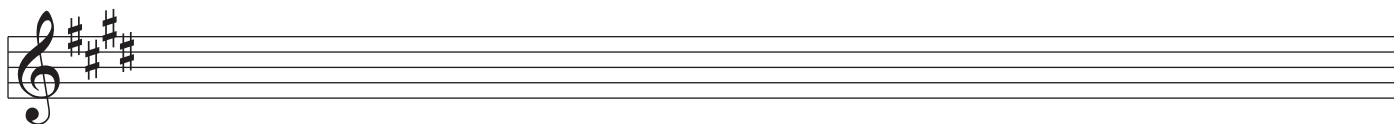
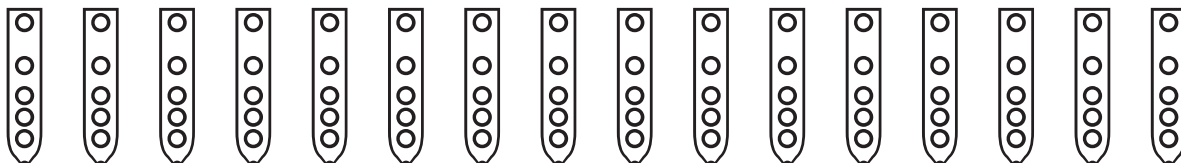
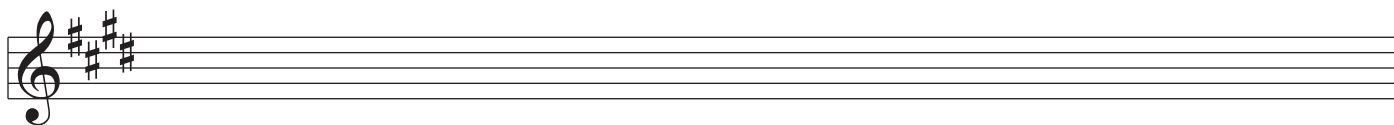
A musical staff with a treble clef and a key signature of three sharps (F#, C#, G#). Below the staff are 12 vertical ovals, each containing six small circles arranged in two columns of three, representing fingerings for the notes on the staff.

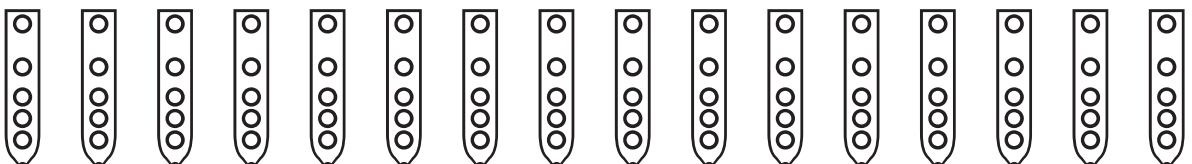
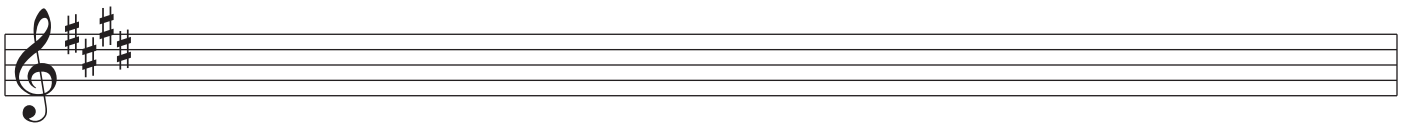
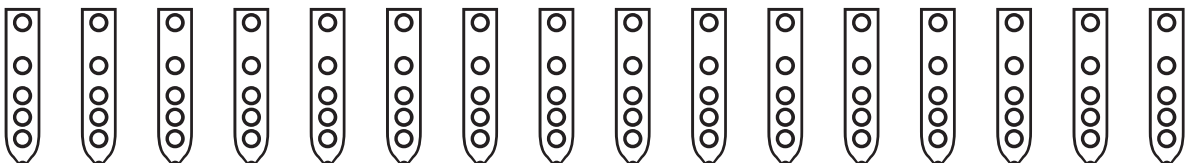
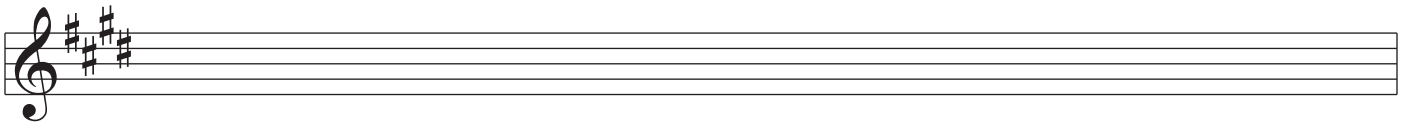
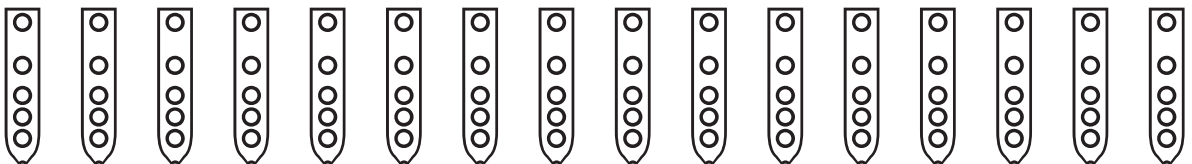
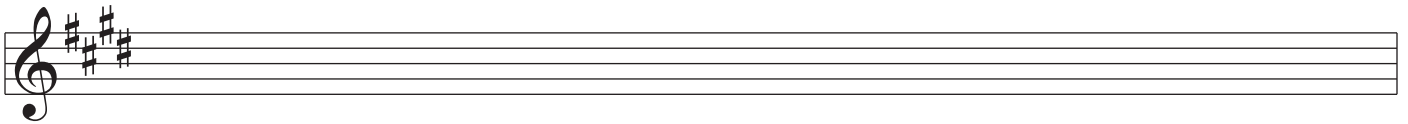
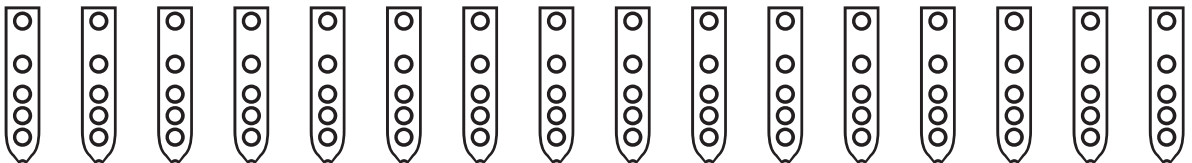
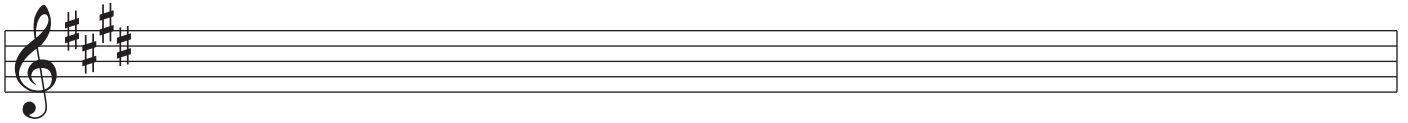
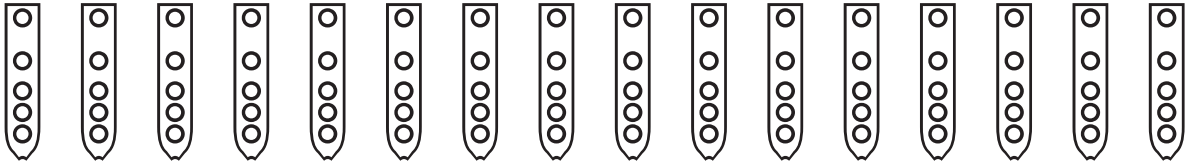
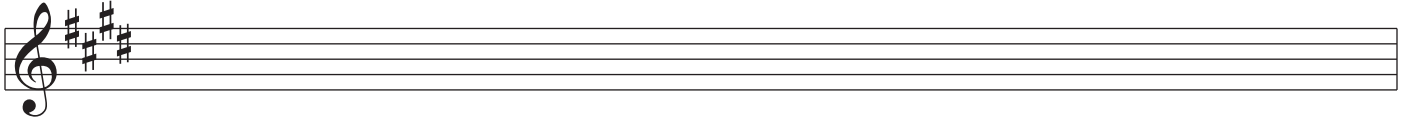
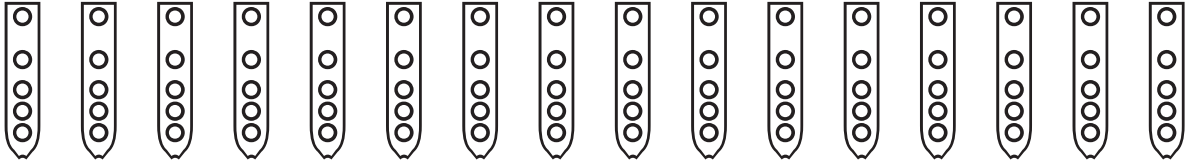
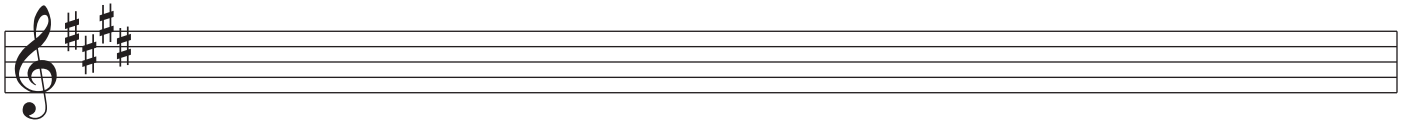
A musical staff with a treble clef and a key signature of three sharps (F#, C#, G#). Below the staff are 12 vertical ovals, each containing six small circles arranged in two columns of three, representing fingerings for the notes on the staff.

---

Nakai Tablature for Native American Flute

---

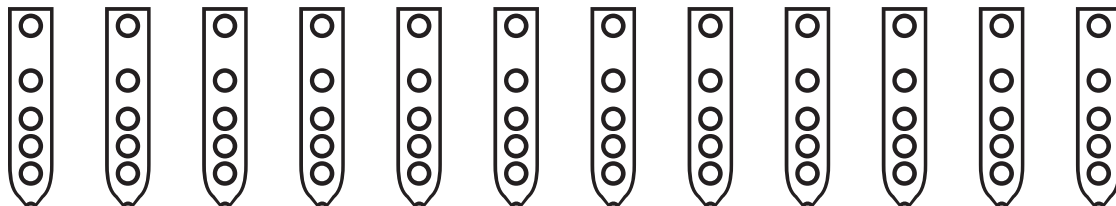
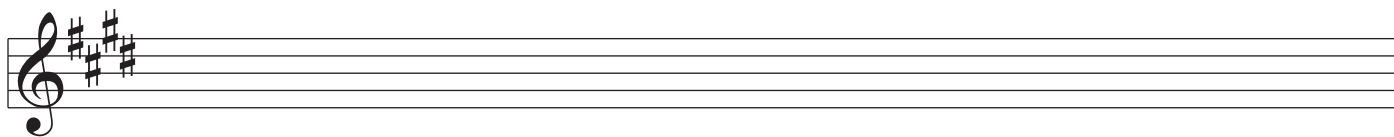
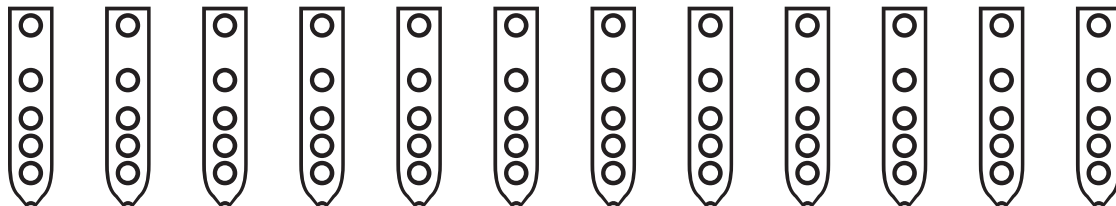
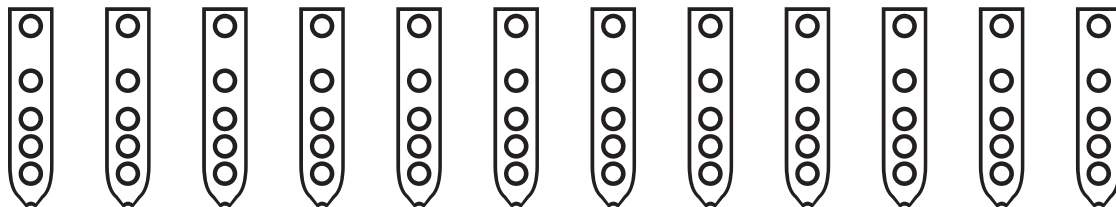
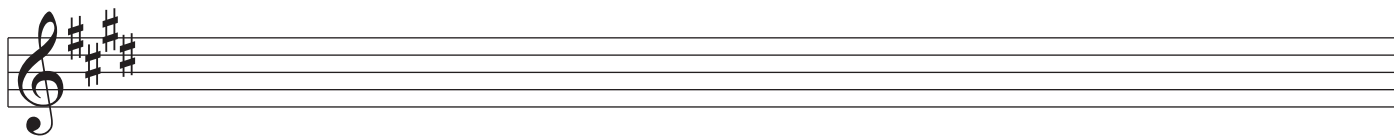
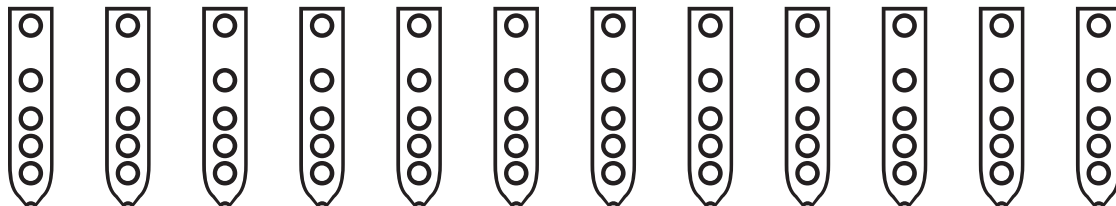
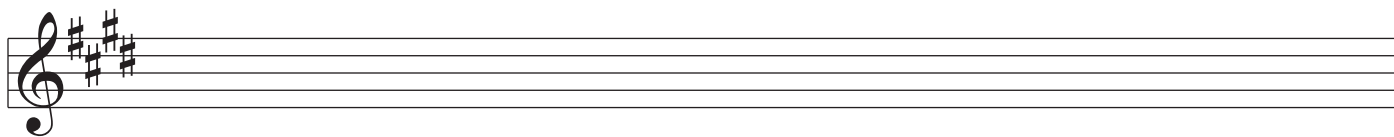




---

Nakai Tablature for Native American Flute

---



A musical staff with a treble clef and a key signature of three sharps (F#, C#, G#). Below the staff are 12 vertical fingerings for the right hand, each represented by a vertical oval containing four circles representing the fingers.

A musical staff with a treble clef and a key signature of three sharps (F#, C#, G#). Below the staff are 12 vertical fingerings for the left hand, each represented by a vertical oval containing four circles representing the fingers.

A musical staff with a treble clef and a key signature of three sharps (F#, C#, G#). Below the staff are 12 vertical fingerings for the right hand, each represented by a vertical oval containing four circles representing the fingers.

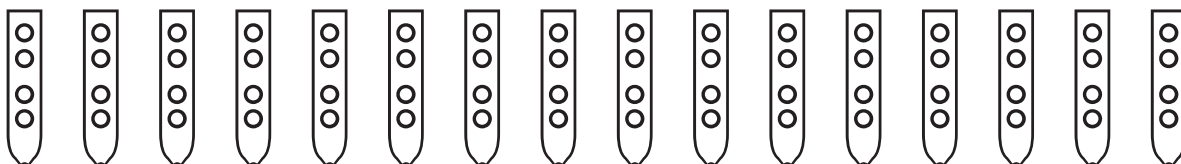
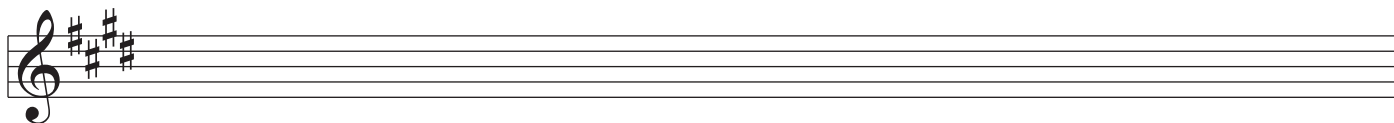
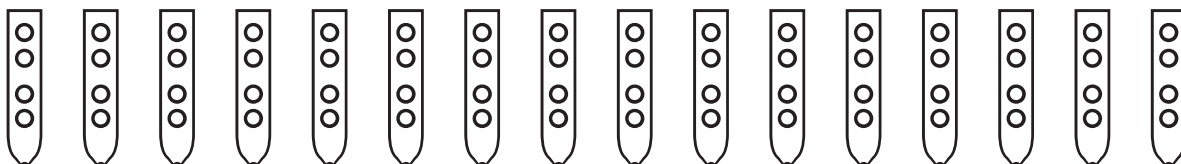
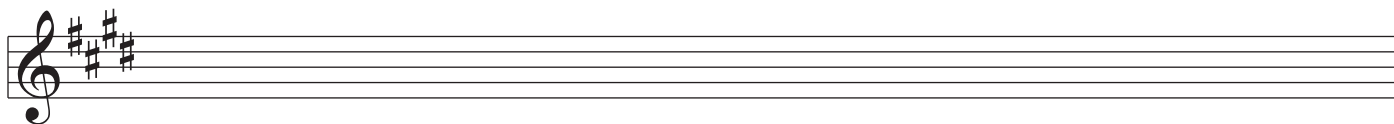
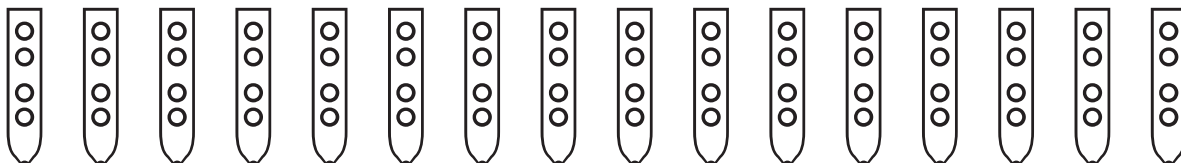
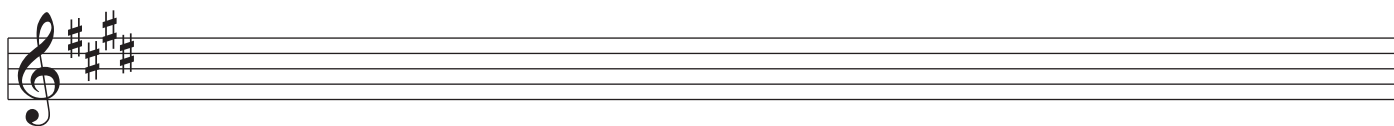
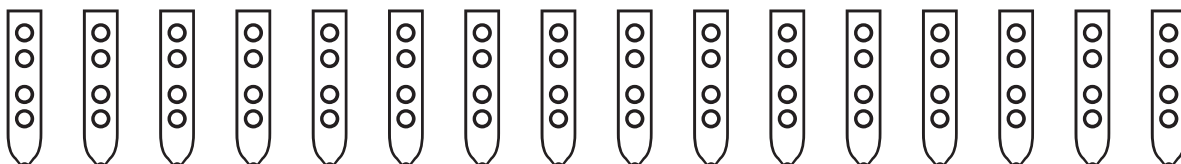
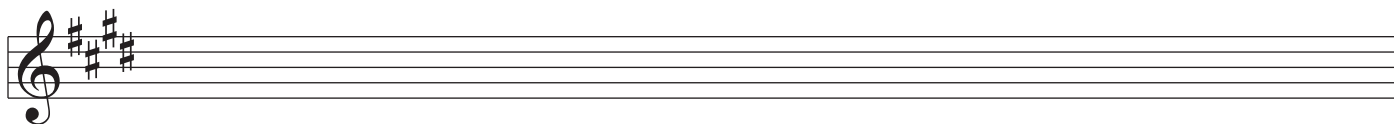
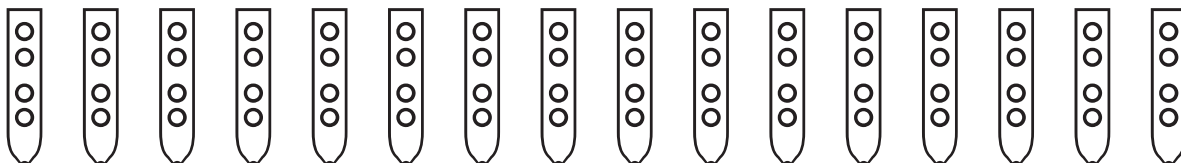
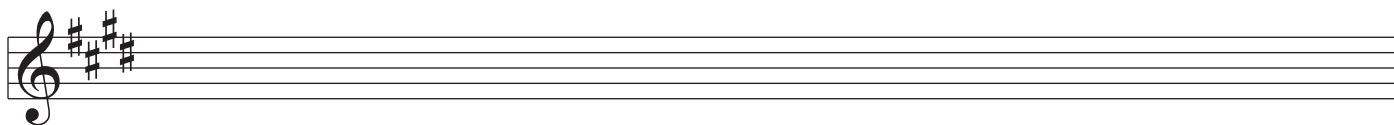
A musical staff with a treble clef and a key signature of three sharps (F#, C#, G#). Below the staff are 12 vertical fingerings for the left hand, each represented by a vertical oval containing four circles representing the fingers.

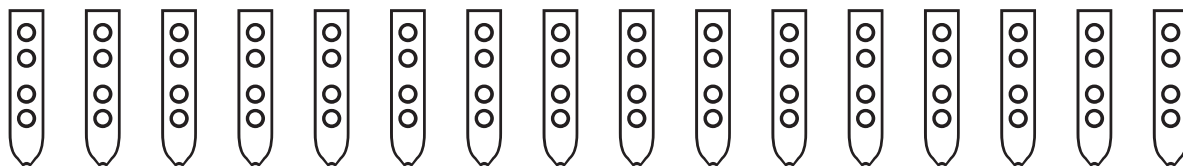
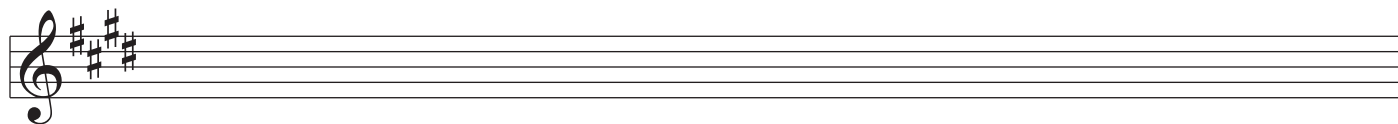
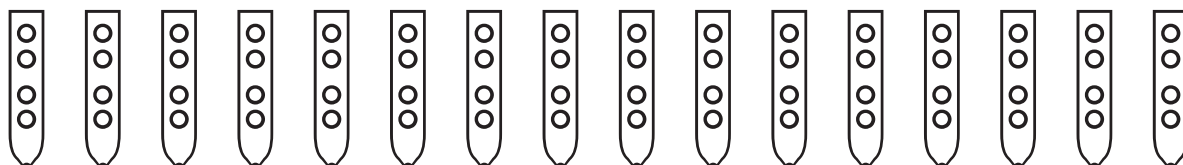
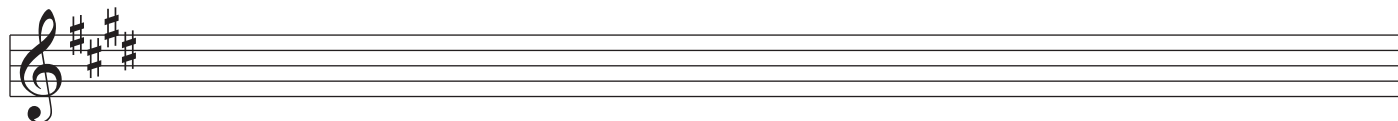
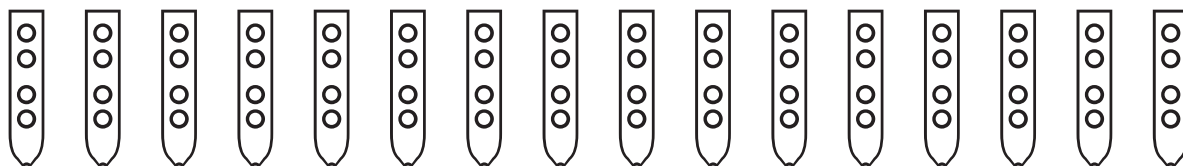
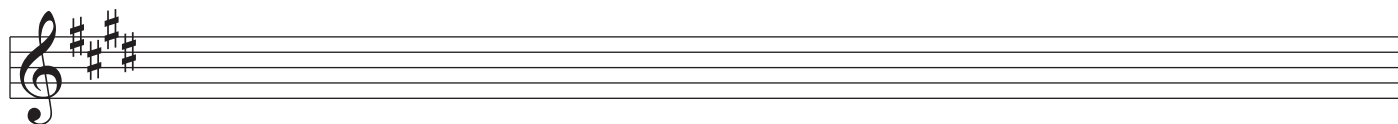
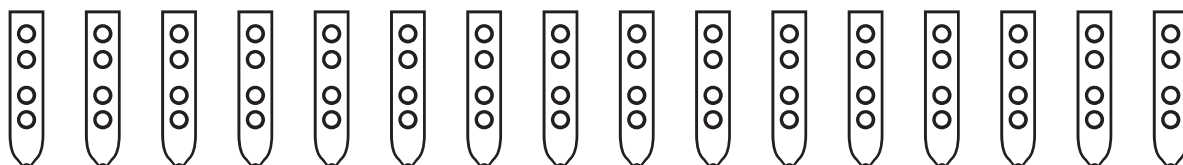
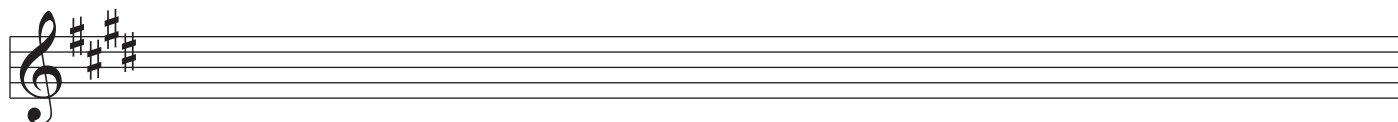
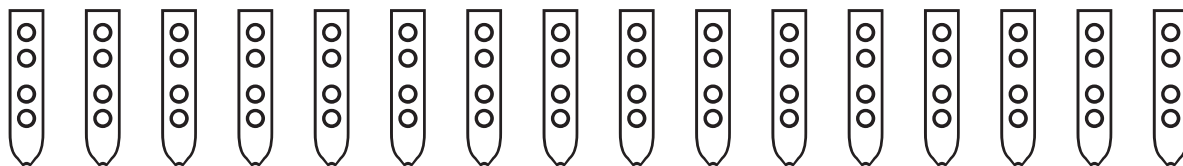
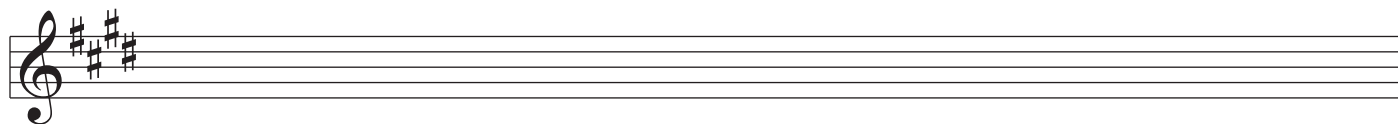
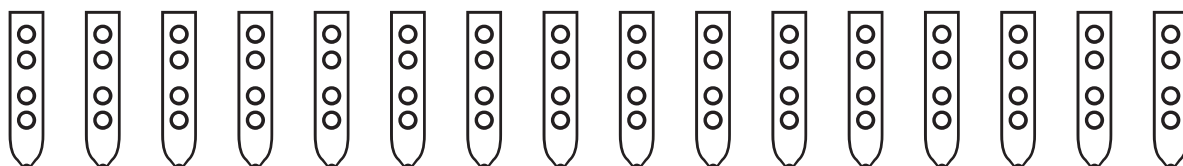
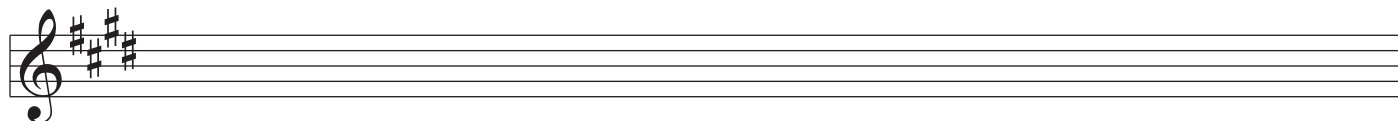
A musical staff with a treble clef and a key signature of three sharps (F#, C#, G#). Below the staff are 12 vertical fingerings for the right hand, each represented by a vertical oval containing four circles representing the fingers.

---

Nakai Tablature for Native American Flute

---





---

Nakai Tablature for Native American Flute

---

A musical staff with a treble clef and a key signature of three sharps (F#, C#, G#). Below the staff are 12 vertical flute diagrams, each with three finger holes.

A musical staff with a treble clef and a key signature of three sharps (F#, C#, G#). Below the staff are 12 vertical flute diagrams, each with three finger holes.

A musical staff with a treble clef and a key signature of three sharps (F#, C#, G#). Below the staff are 12 vertical flute diagrams, each with three finger holes.

A musical staff with a treble clef and a key signature of three sharps (F#, C#, G#). Below the staff are 12 vertical flute diagrams, each with three finger holes.



A musical staff with a treble clef and a key signature of three sharps (F#, C#, G#). Below the staff are 12 empty fingerings, each represented by a vertical oval containing three circles.

A musical staff with a treble clef and a key signature of three sharps (F#, C#, G#). Below the staff are 12 empty fingerings, each represented by a vertical oval containing three circles.

A musical staff with a treble clef and a key signature of three sharps (F#, C#, G#). Below the staff are 12 empty fingerings, each represented by a vertical oval containing three circles.

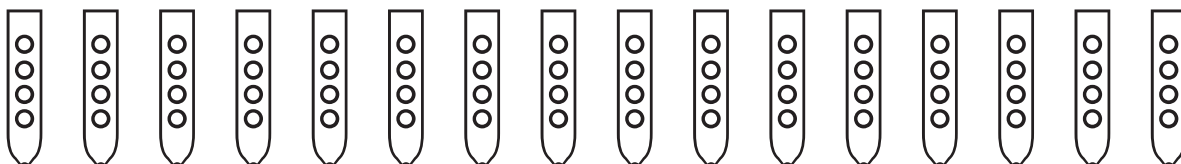
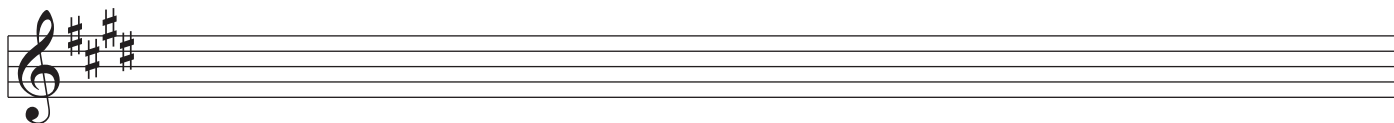
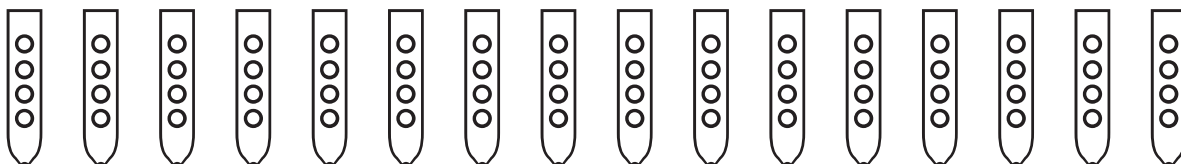
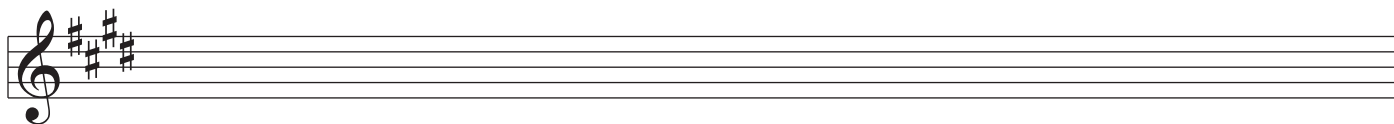
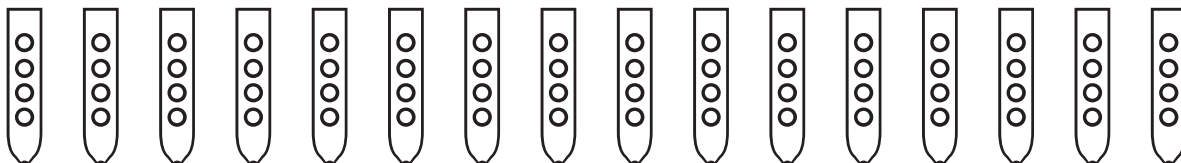
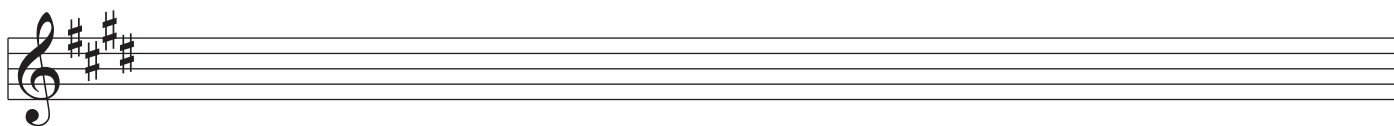
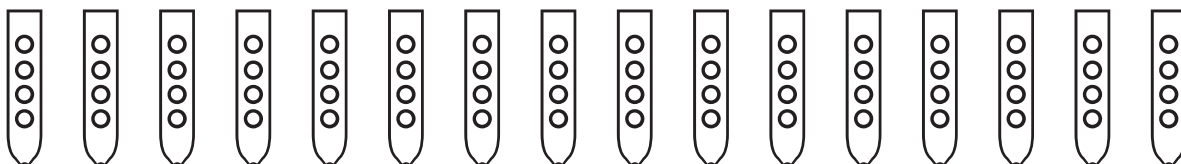
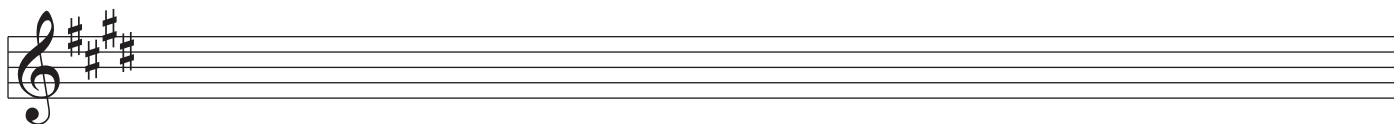
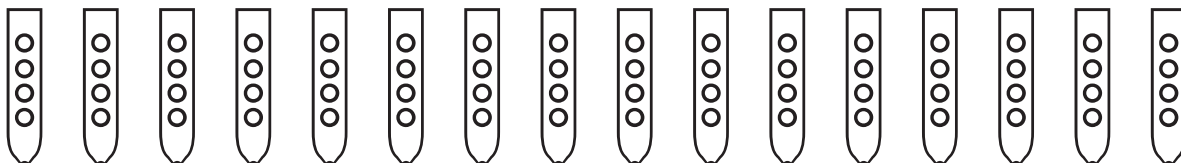
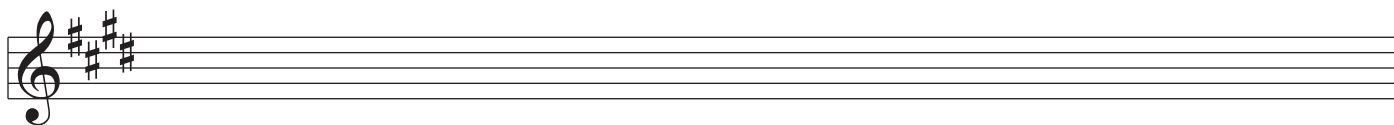
A musical staff with a treble clef and a key signature of three sharps (F#, C#, G#). Below the staff are 12 empty fingerings, each represented by a vertical oval containing three circles.

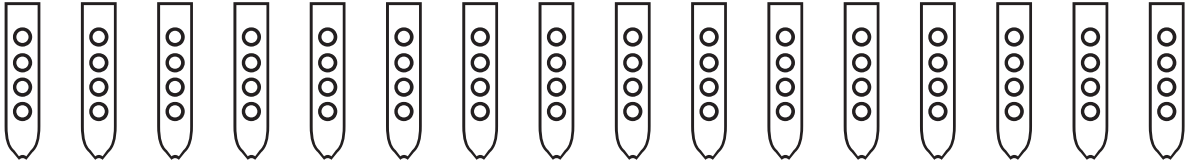
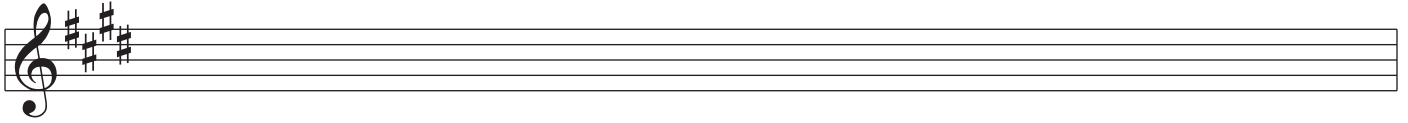
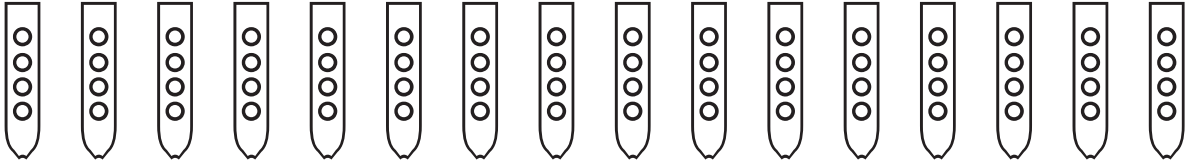
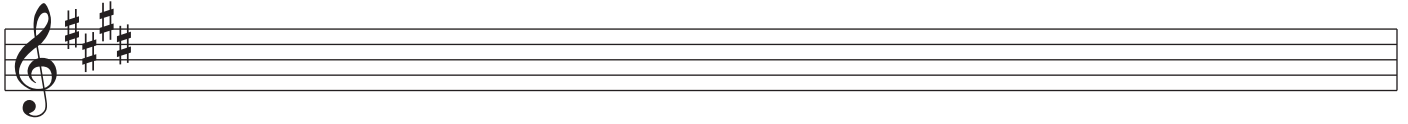
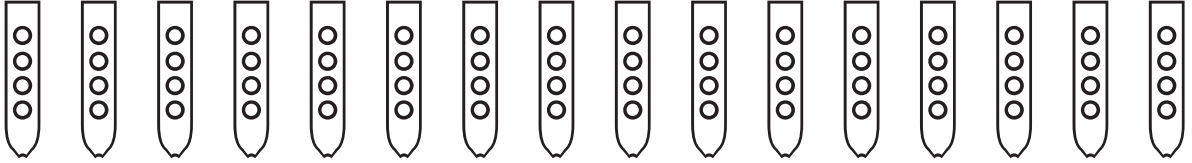
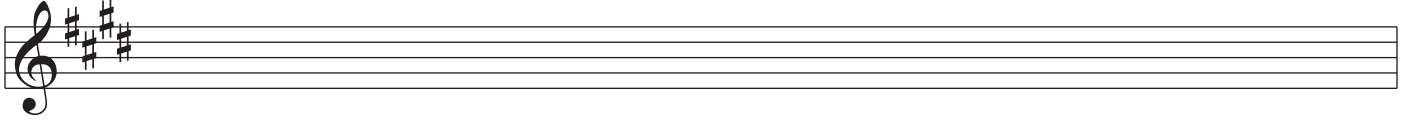
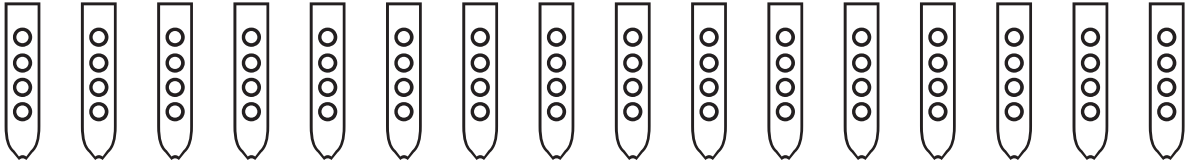
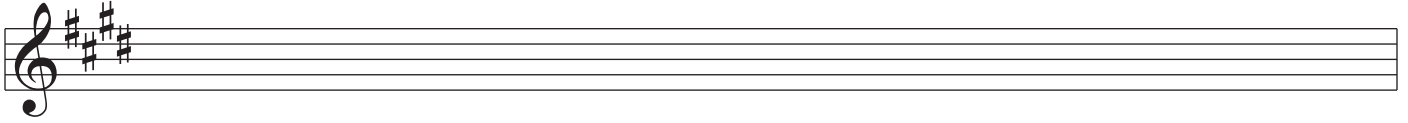
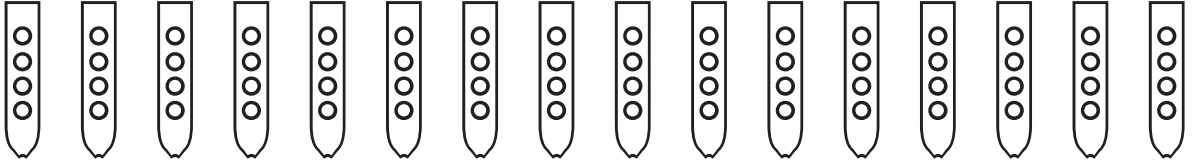
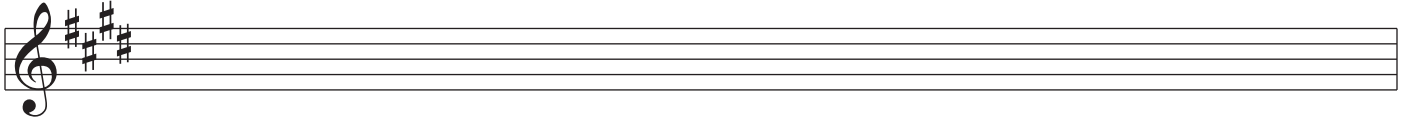
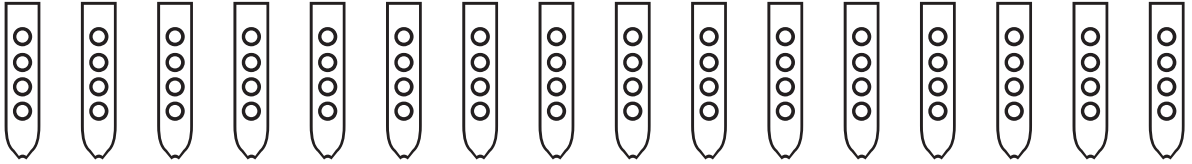
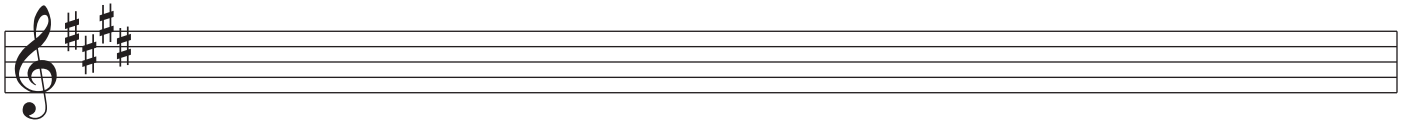
A musical staff with a treble clef and a key signature of three sharps (F#, C#, G#). Below the staff are 12 empty fingerings, each represented by a vertical oval containing three circles.

---

Nakai Tablature for Native American Flute

---





---

Nakai Tablature for Native American Flute

---

A musical staff with a treble clef and a key signature of three sharps (F#, C#, G#). Below the staff are 12 vertical flute finger diagrams, each containing three circles representing finger positions.

A musical staff with a treble clef and a key signature of three sharps (F#, C#, G#). Below the staff are 12 vertical flute finger diagrams, each containing three circles representing finger positions.

A musical staff with a treble clef and a key signature of three sharps (F#, C#, G#). Below the staff are 12 vertical flute finger diagrams, each containing three circles representing finger positions.

A musical staff with a treble clef and a key signature of three sharps (F#, C#, G#). Below the staff are 12 vertical flute finger diagrams, each containing three circles representing finger positions.

A musical staff with a treble clef and a key signature of three sharps (F#, C#, G#). Below the staff are 12 fingerings, each represented by a vertical oval containing four small circles, indicating the finger placement for each note.

A musical staff with a treble clef and a key signature of three sharps (F#, C#, G#). Below the staff are 12 fingerings, each represented by a vertical oval containing four small circles, indicating the finger placement for each note.

A musical staff with a treble clef and a key signature of three sharps (F#, C#, G#). Below the staff are 12 fingerings, each represented by a vertical oval containing four small circles, indicating the finger placement for each note.

A musical staff with a treble clef and a key signature of three sharps (F#, C#, G#). Below the staff are 12 fingerings, each represented by a vertical oval containing four small circles, indicating the finger placement for each note.

A musical staff with a treble clef and a key signature of three sharps (F#, C#, G#). Below the staff are 12 fingerings, each represented by a vertical oval containing four small circles, indicating the finger placement for each note.

---

Nakai Tablature for Native American Flute

---

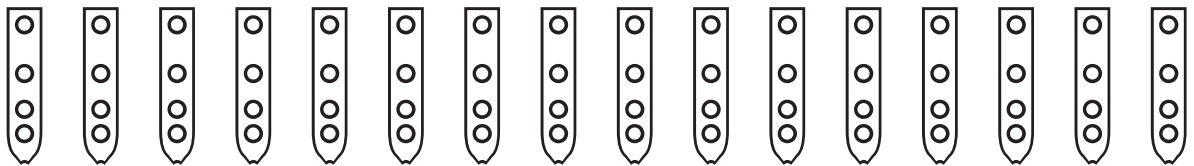
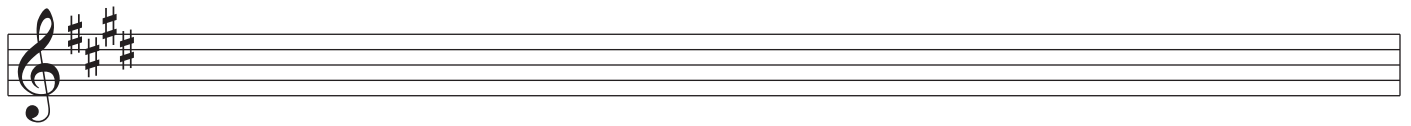
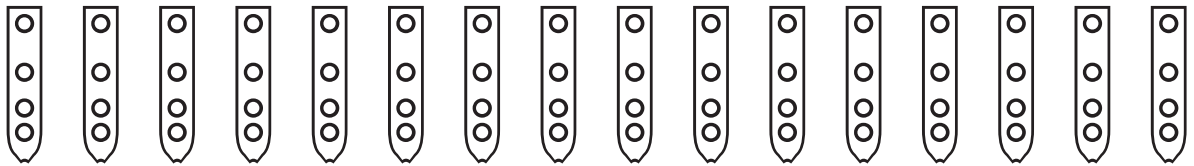
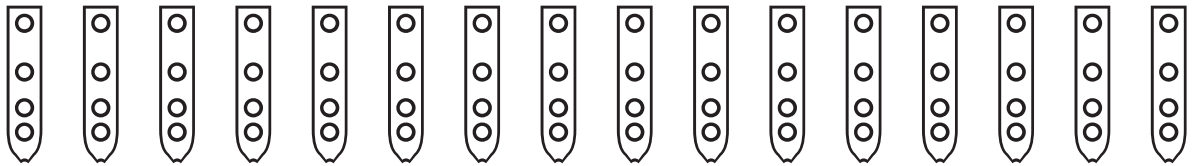
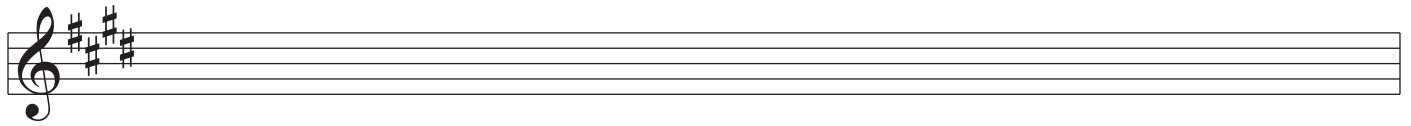
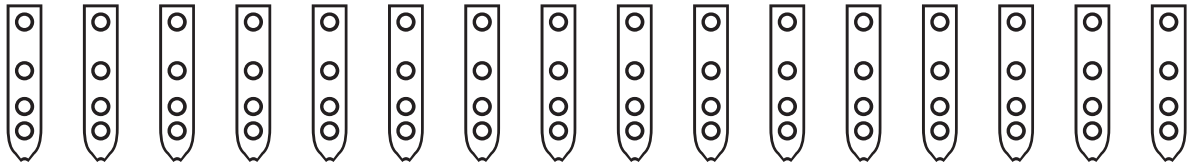
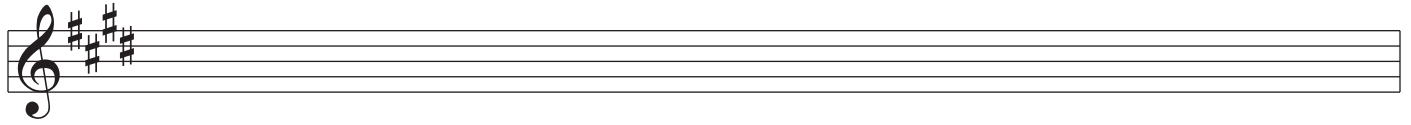
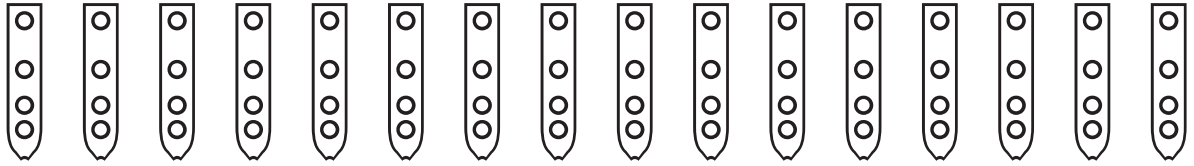
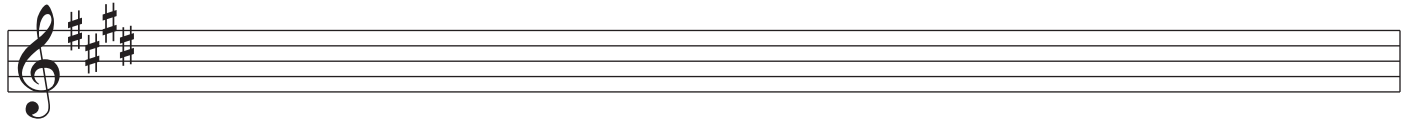
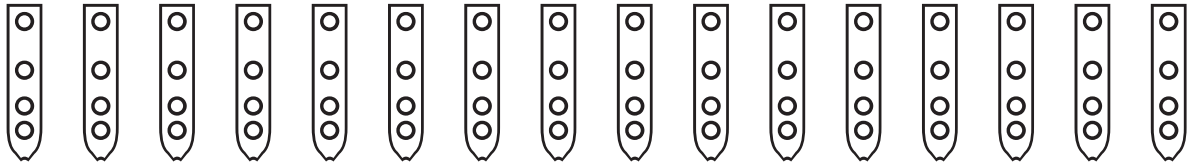
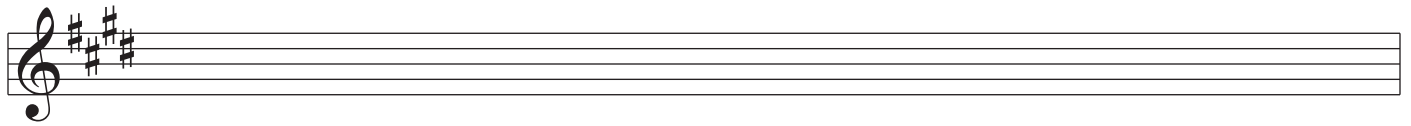
A musical staff with a treble clef and a key signature of three sharps (F#, C#, G#). Below the staff are 15 vertical flute diagrams, each with three finger holes.

A musical staff with a treble clef and a key signature of three sharps (F#, C#, G#). Below the staff are 15 vertical flute diagrams, each with three finger holes.

A musical staff with a treble clef and a key signature of three sharps (F#, C#, G#). Below the staff are 15 vertical flute diagrams, each with three finger holes.

A musical staff with a treble clef and a key signature of three sharps (F#, C#, G#). Below the staff are 15 vertical flute diagrams, each with three finger holes.

A musical staff with a treble clef and a key signature of three sharps (F#, C#, G#). Below the staff are 15 vertical flute diagrams, each with three finger holes.



---

Nakai Tablature for Native American Flute

---

A musical staff with a treble clef and a key signature of three sharps (F#, C#, G#). Below the staff are 12 vertical flute diagrams, each with three finger holes.

A musical staff with a treble clef and a key signature of three sharps (F#, C#, G#). Below the staff are 12 vertical flute diagrams, each with three finger holes.

A musical staff with a treble clef and a key signature of three sharps (F#, C#, G#). Below the staff are 12 vertical flute diagrams, each with three finger holes.

A musical staff with a treble clef and a key signature of three sharps (F#, C#, G#). Below the staff are 12 vertical flute diagrams, each with three finger holes.



A musical staff with a treble clef and a key signature of three sharps (F#, C#, G#). Below the staff are 12 empty fingerings, each represented by a vertical oval containing three small circles.

A musical staff with a treble clef and a key signature of three sharps (F#, C#, G#). Below the staff are 12 empty fingerings, each represented by a vertical oval containing three small circles.

A musical staff with a treble clef and a key signature of three sharps (F#, C#, G#). Below the staff are 12 empty fingerings, each represented by a vertical oval containing three small circles.

A musical staff with a treble clef and a key signature of three sharps (F#, C#, G#). Below the staff are 12 empty fingerings, each represented by a vertical oval containing three small circles.

A musical staff with a treble clef and a key signature of three sharps (F#, C#, G#). Below the staff are 12 empty fingerings, each represented by a vertical oval containing three small circles.

---

Nakai Tablature for Native American Flute

---

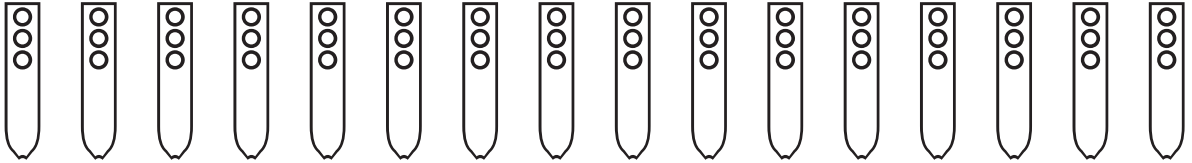
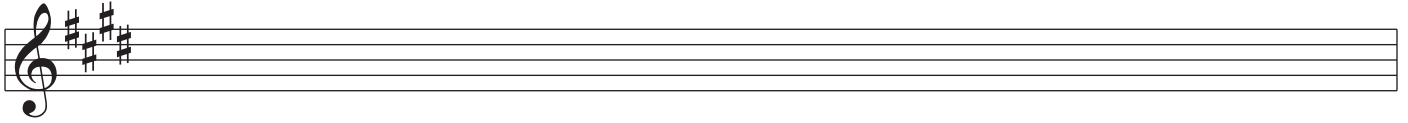
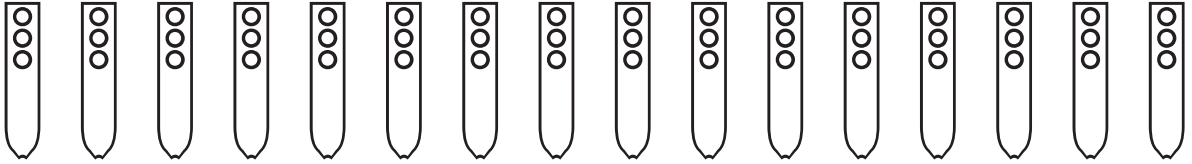
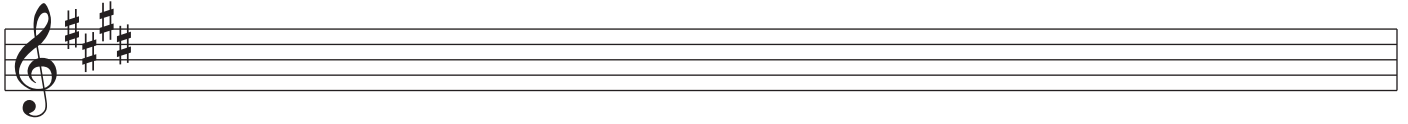
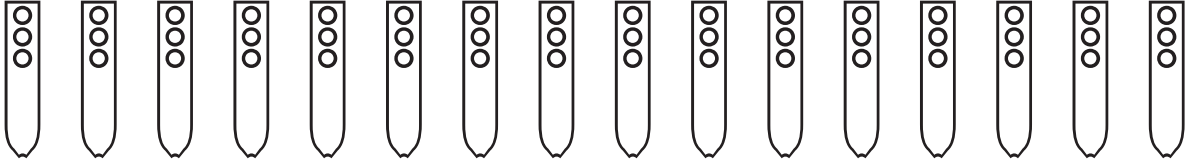
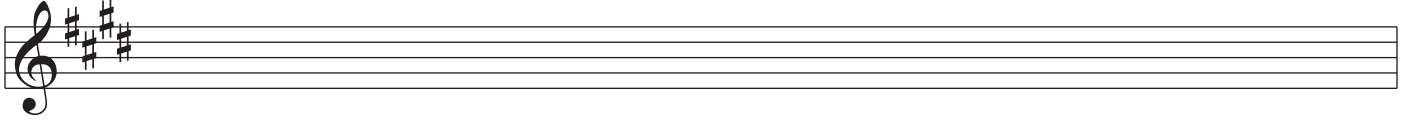
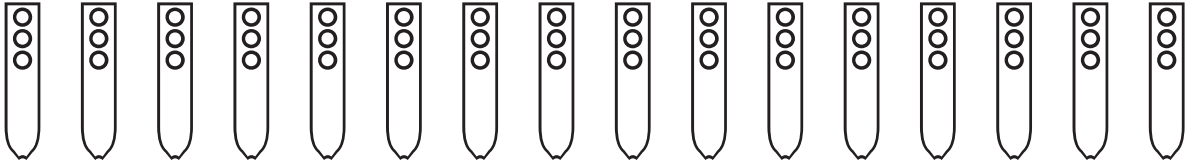
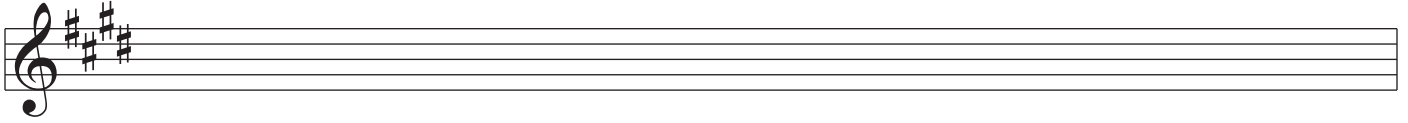
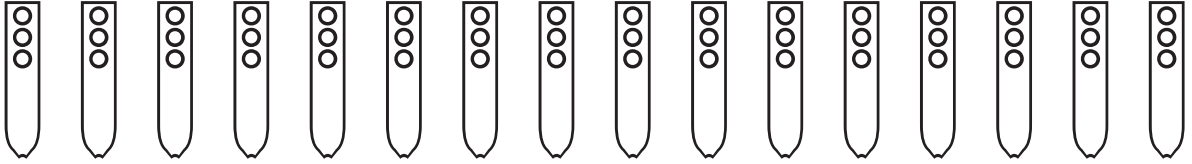
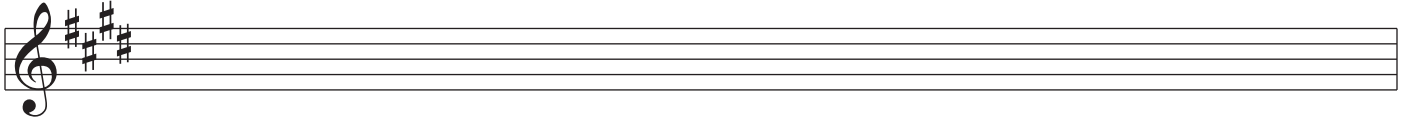
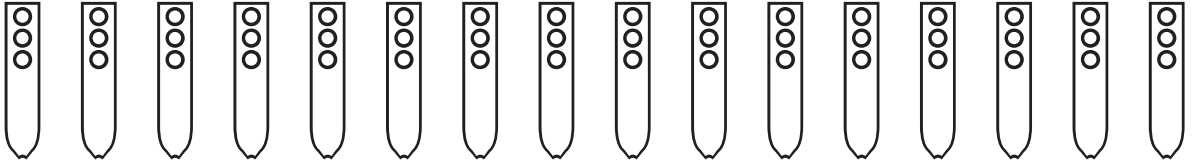
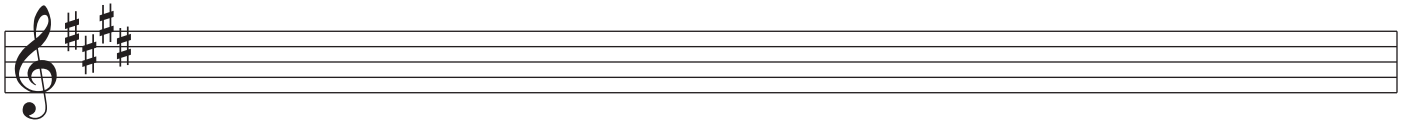
A musical staff with a treble clef and a key signature of three sharps (F#, C#, G#). Below the staff are 15 vertical flute finger diagrams, each containing two circles representing finger positions.

A musical staff with a treble clef and a key signature of three sharps (F#, C#, G#). Below the staff are 15 vertical flute finger diagrams, each containing two circles representing finger positions.

A musical staff with a treble clef and a key signature of three sharps (F#, C#, G#). Below the staff are 15 vertical flute finger diagrams, each containing two circles representing finger positions.

A musical staff with a treble clef and a key signature of three sharps (F#, C#, G#). Below the staff are 15 vertical flute finger diagrams, each containing two circles representing finger positions.

A musical staff with a treble clef and a key signature of three sharps (F#, C#, G#). Below the staff are 15 vertical flute finger diagrams, each containing two circles representing finger positions.



---

Nakai Tablature for Native American Flute

---

A musical staff with a treble clef and a key signature of three sharps (F#, C#, G#). Below the staff are 12 vertical flute finger diagrams, each containing two circles representing finger holes.

A musical staff with a treble clef and a key signature of three sharps (F#, C#, G#). Below the staff are 12 vertical flute finger diagrams, each containing two circles representing finger holes.

A musical staff with a treble clef and a key signature of three sharps (F#, C#, G#). Below the staff are 12 vertical flute finger diagrams, each containing two circles representing finger holes.

A musical staff with a treble clef and a key signature of three sharps (F#, C#, G#). Below the staff are 12 vertical flute finger diagrams, each containing two circles representing finger holes.

A musical staff with a treble clef and a key signature of three sharps (F#, C#, G#). Below the staff are 12 empty fingerings, each represented by a vertical oval containing two small circles.

A musical staff with a treble clef and a key signature of three sharps (F#, C#, G#). Below the staff are 12 empty fingerings, each represented by a vertical oval containing two small circles.

A musical staff with a treble clef and a key signature of three sharps (F#, C#, G#). Below the staff are 12 empty fingerings, each represented by a vertical oval containing two small circles.

A musical staff with a treble clef and a key signature of three sharps (F#, C#, G#). Below the staff are 12 empty fingerings, each represented by a vertical oval containing two small circles.

A musical staff with a treble clef and a key signature of three sharps (F#, C#, G#). Below the staff are 12 empty fingerings, each represented by a vertical oval containing two small circles.

---

Nakai Tablature for Native American Flute

---

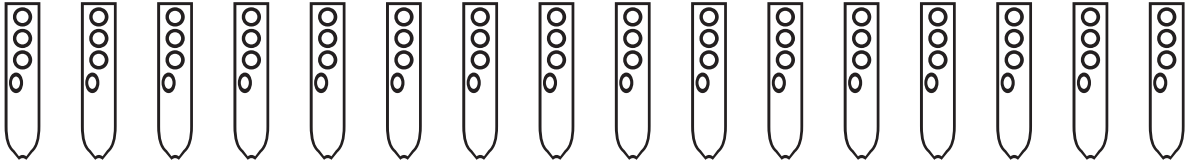
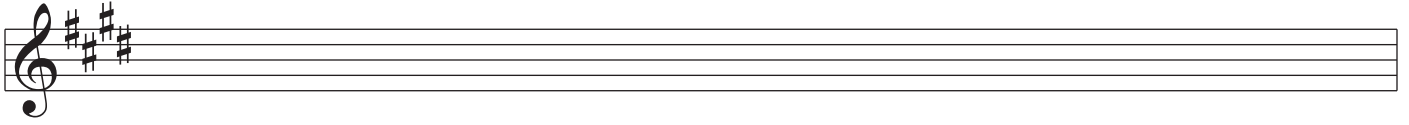
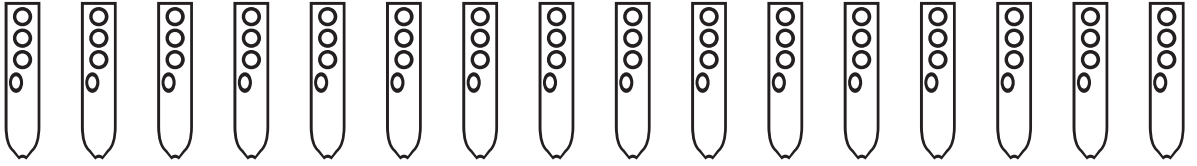
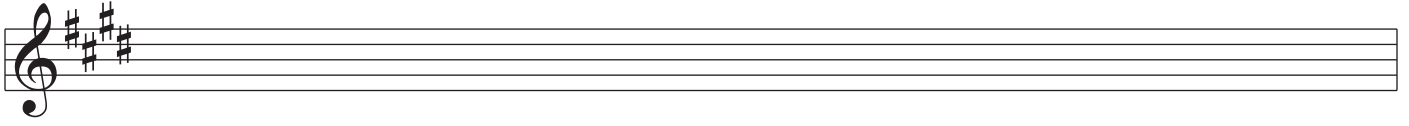
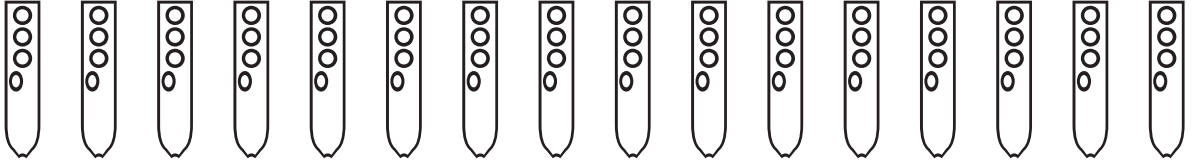
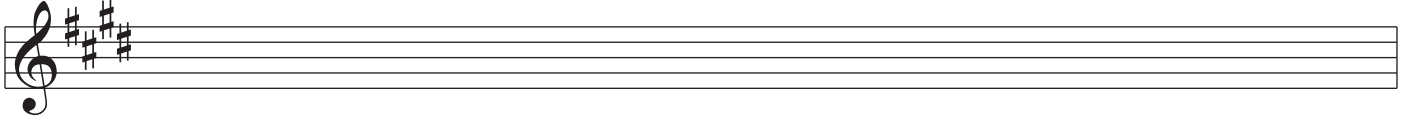
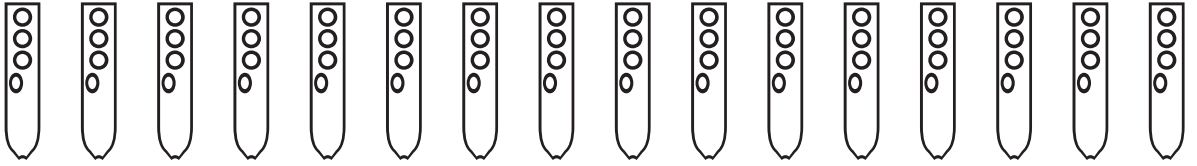
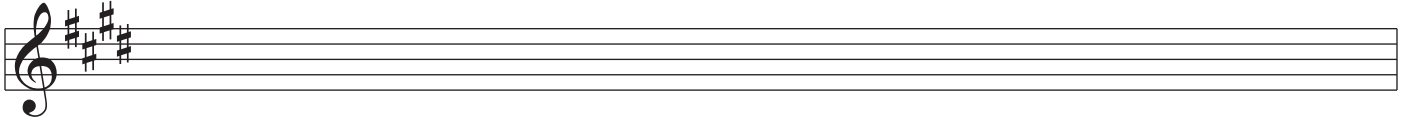
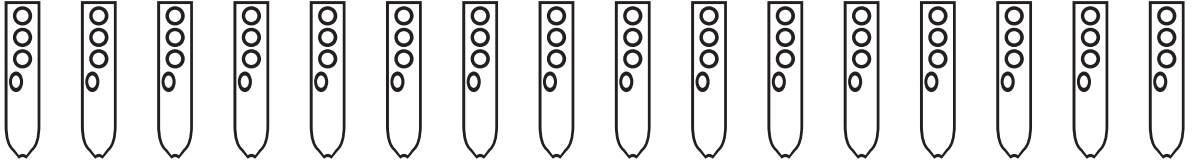
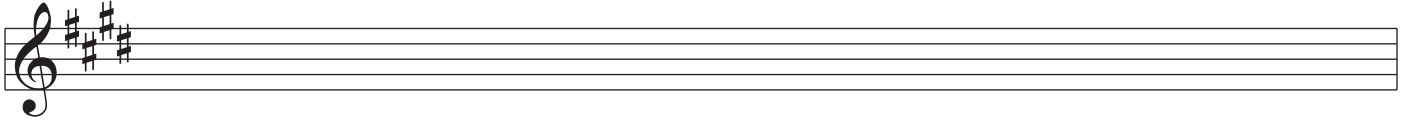
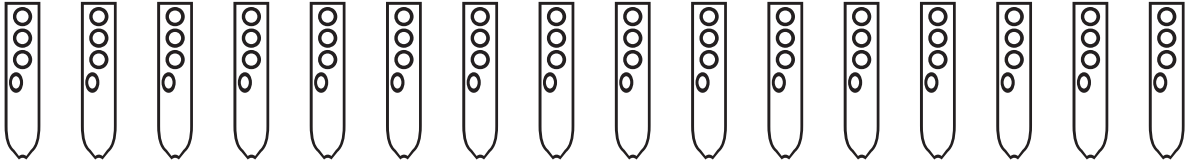
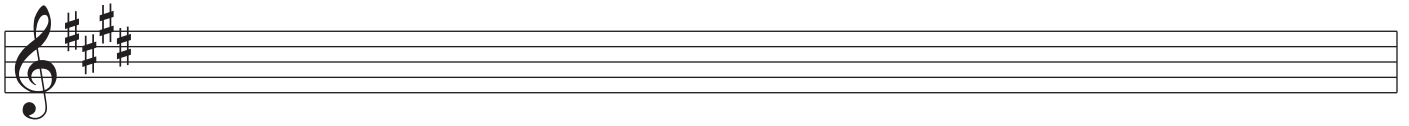
Musical staff with treble clef and key signature of three sharps (F#, C#, G#). Below the staff are 15 vertical flute diagrams, each containing four circles representing finger holes. The first hole is open in all diagrams. The second hole is closed in the first 14 diagrams and open in the 15th. The third hole is closed in the first 13 diagrams and open in the last two. The fourth hole is closed in the first 11 diagrams and open in the last four.

Musical staff with treble clef and key signature of three sharps (F#, C#, G#). Below the staff are 15 vertical flute diagrams, each containing four circles representing finger holes. The first hole is open in all diagrams. The second hole is closed in the first 14 diagrams and open in the 15th. The third hole is closed in the first 13 diagrams and open in the last two. The fourth hole is closed in the first 11 diagrams and open in the last four.

Musical staff with treble clef and key signature of three sharps (F#, C#, G#). Below the staff are 15 vertical flute diagrams, each containing four circles representing finger holes. The first hole is open in all diagrams. The second hole is closed in the first 14 diagrams and open in the 15th. The third hole is closed in the first 13 diagrams and open in the last two. The fourth hole is closed in the first 11 diagrams and open in the last four.

Musical staff with treble clef and key signature of three sharps (F#, C#, G#). Below the staff are 15 vertical flute diagrams, each containing four circles representing finger holes. The first hole is open in all diagrams. The second hole is closed in the first 14 diagrams and open in the 15th. The third hole is closed in the first 13 diagrams and open in the last two. The fourth hole is closed in the first 11 diagrams and open in the last four.

Musical staff with treble clef and key signature of three sharps (F#, C#, G#). Below the staff are 15 vertical flute diagrams, each containing four circles representing finger holes. The first hole is open in all diagrams. The second hole is closed in the first 14 diagrams and open in the 15th. The third hole is closed in the first 13 diagrams and open in the last two. The fourth hole is closed in the first 11 diagrams and open in the last four.



---

Nakai Tablature for Native American Flute

---

A musical staff with a treble clef and a key signature of three sharps (F#, C#, G#). Below the staff are 12 vertical flute diagrams, each with four finger holes and a thumb hole. The first hole is open, and the second hole is closed.

A musical staff with a treble clef and a key signature of three sharps (F#, C#, G#). Below the staff are 12 vertical flute diagrams, each with four finger holes and a thumb hole. The first hole is open, and the second hole is closed.

A musical staff with a treble clef and a key signature of three sharps (F#, C#, G#). Below the staff are 12 vertical flute diagrams, each with four finger holes and a thumb hole. The first hole is open, and the second hole is closed.

A musical staff with a treble clef and a key signature of three sharps (F#, C#, G#). Below the staff are 12 vertical flute diagrams, each with four finger holes and a thumb hole. The first hole is open, and the second hole is closed.



A musical staff with a treble clef and a key signature of three sharps (F#, C#, G#). Below the staff are 12 fingerings for the first finger, each represented by a vertical oval containing three circles and a small circle at the bottom.

A musical staff with a treble clef and a key signature of three sharps (F#, C#, G#). Below the staff are 12 fingerings for the second finger, each represented by a vertical oval containing three circles and a small circle at the bottom.

A musical staff with a treble clef and a key signature of three sharps (F#, C#, G#). Below the staff are 12 fingerings for the third finger, each represented by a vertical oval containing three circles and a small circle at the bottom.

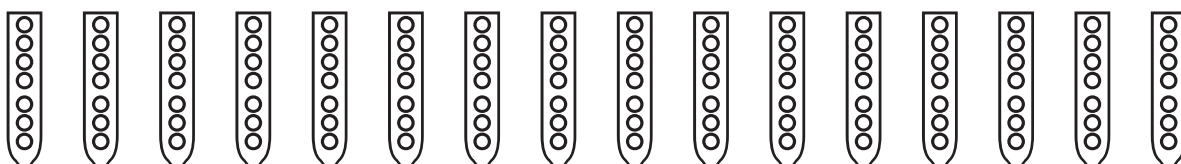
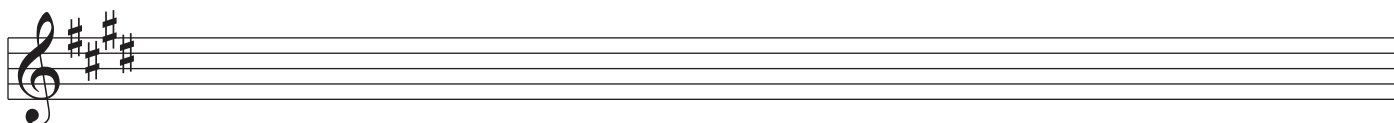
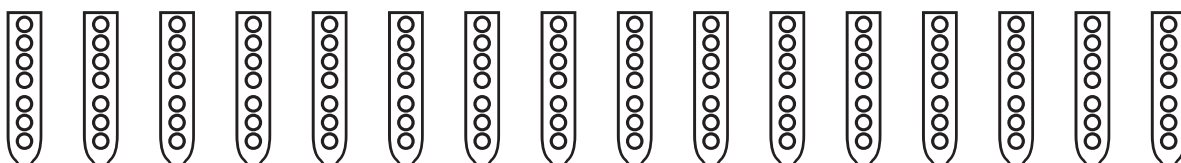
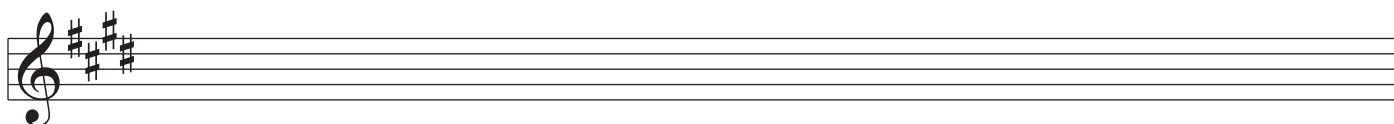
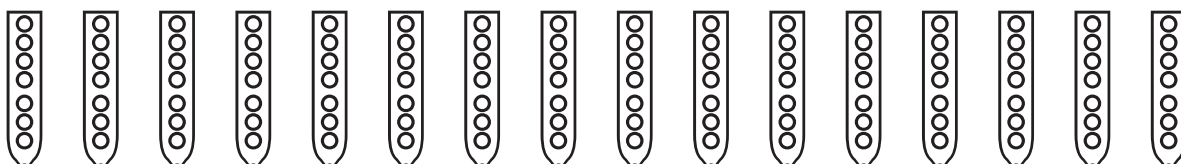
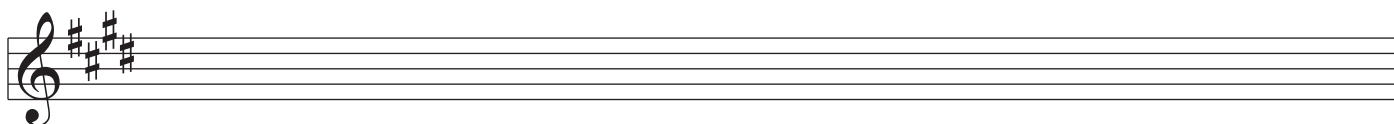
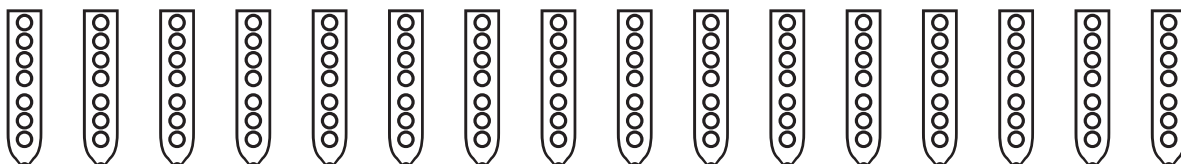
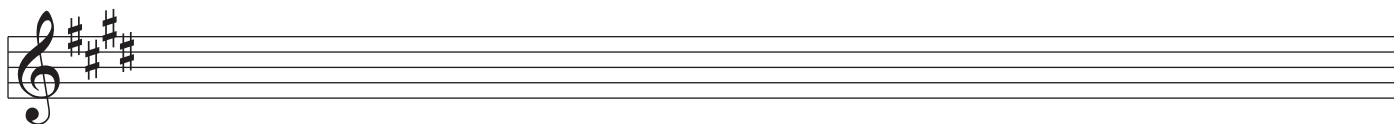
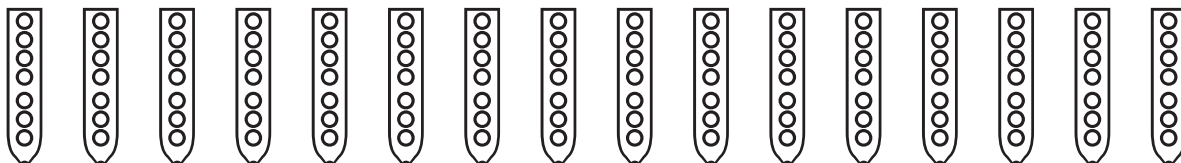
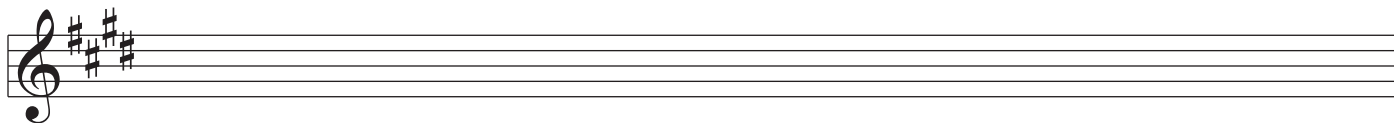
A musical staff with a treble clef and a key signature of three sharps (F#, C#, G#). Below the staff are 12 fingerings for the fourth finger, each represented by a vertical oval containing three circles and a small circle at the bottom.

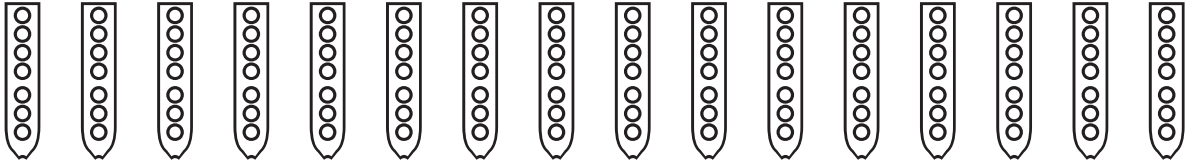
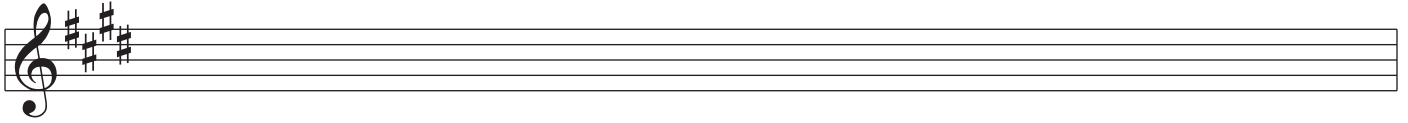
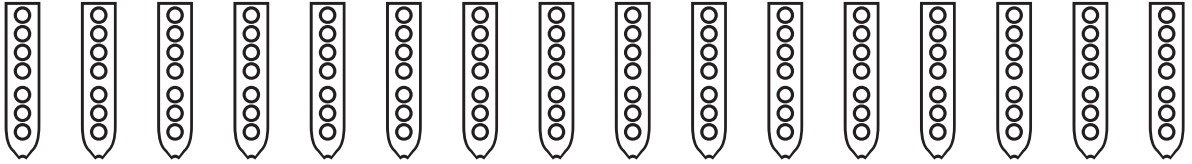
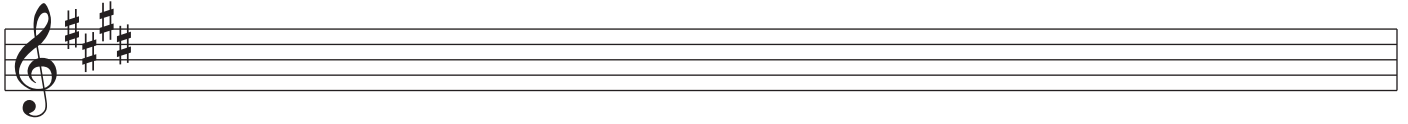
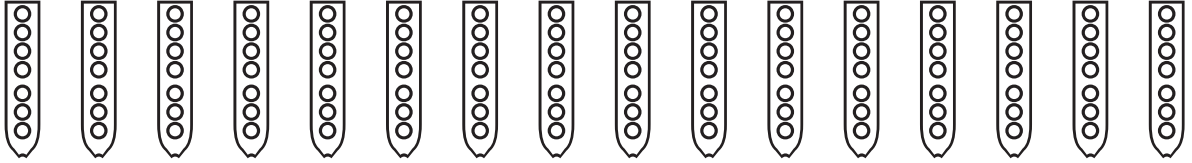
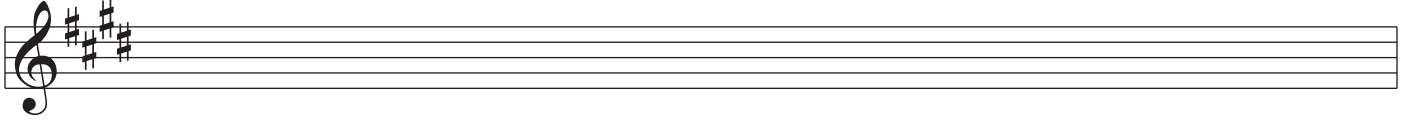
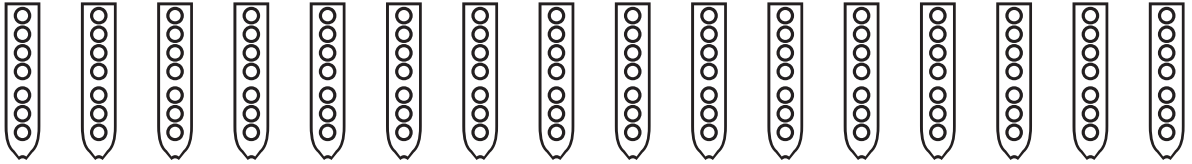
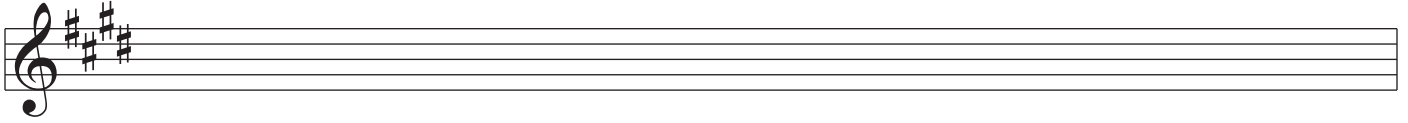
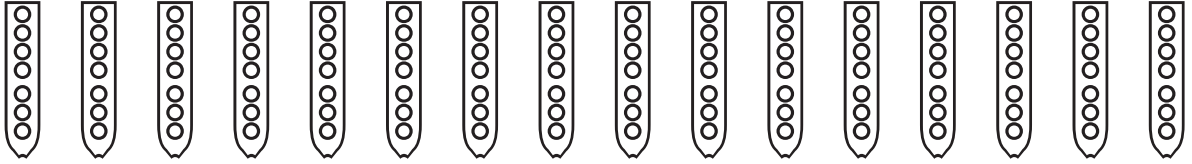
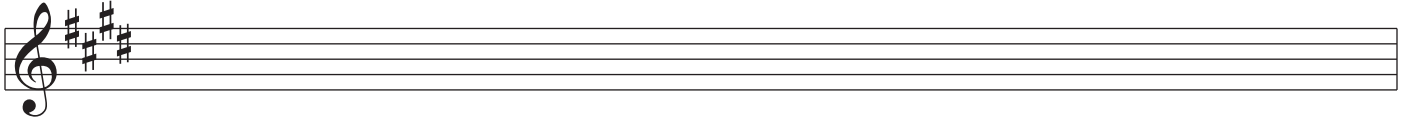
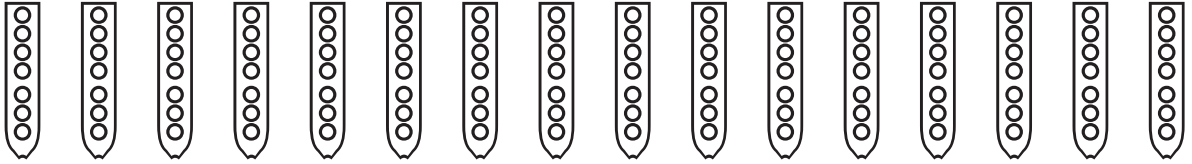
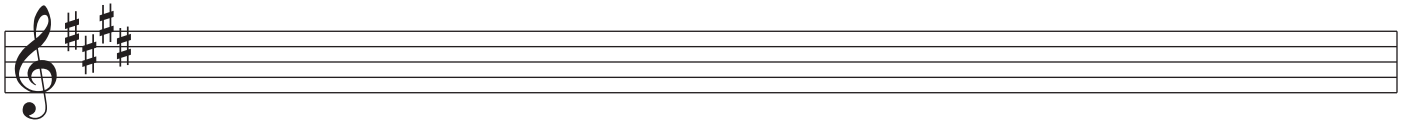
A musical staff with a treble clef and a key signature of three sharps (F#, C#, G#). Below the staff are 12 fingerings for the fifth finger, each represented by a vertical oval containing three circles and a small circle at the bottom.

---

Nakai Tablature for Native American Flute

---

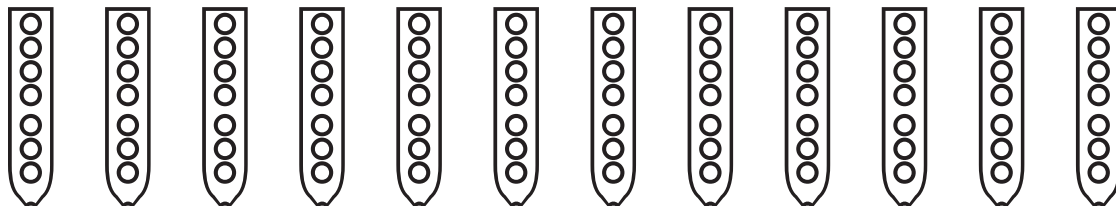
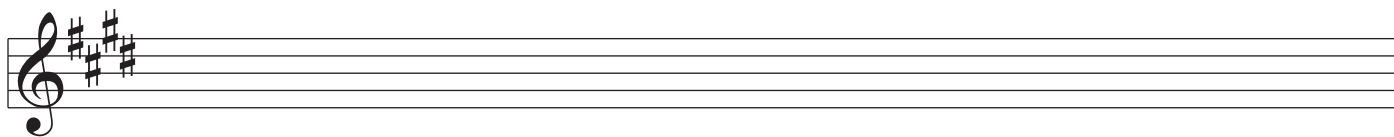
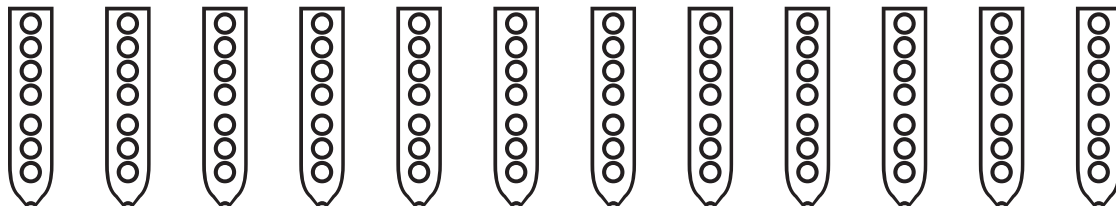
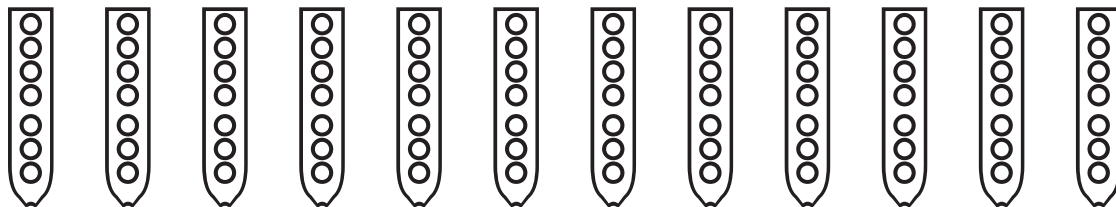
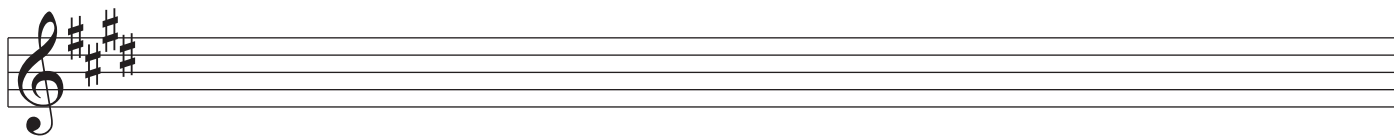
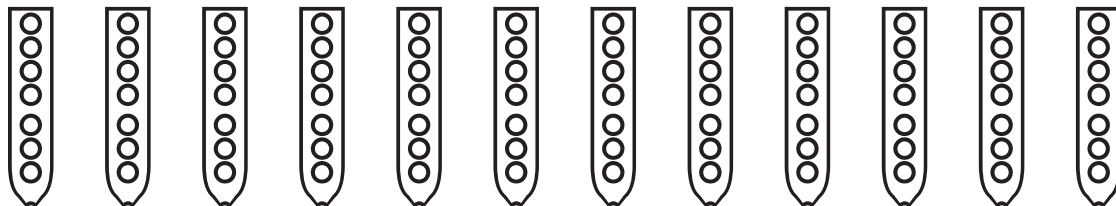
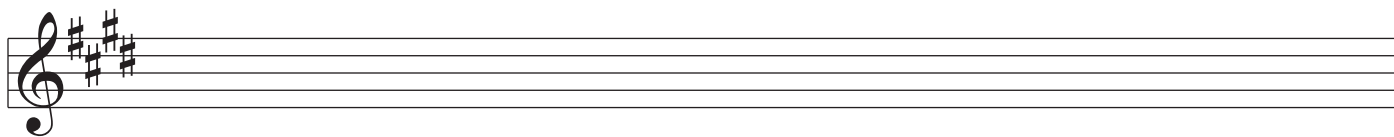


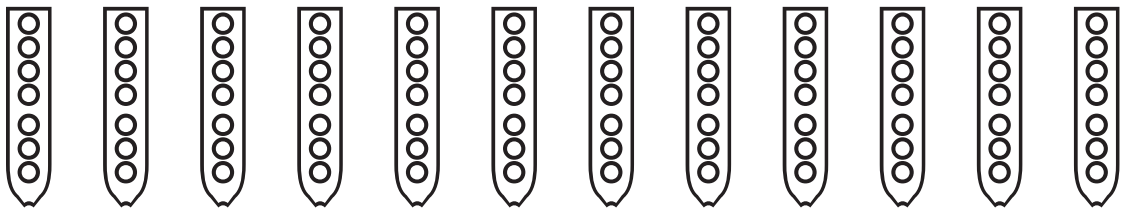
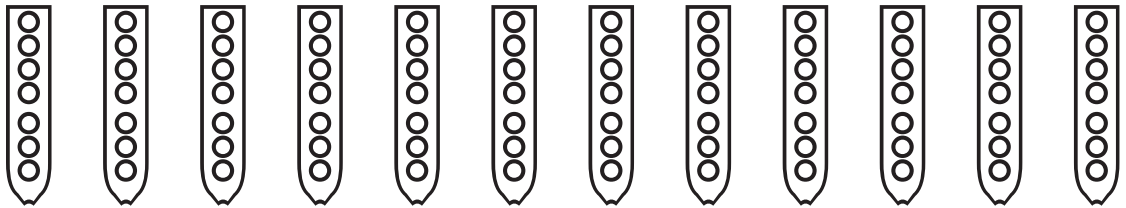
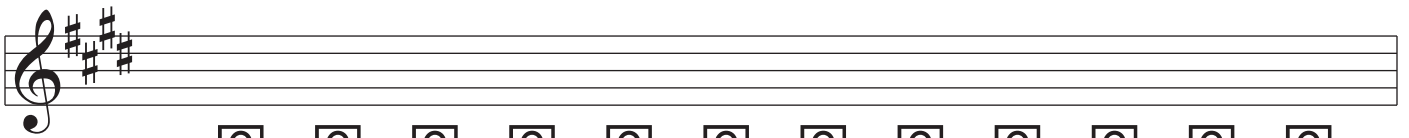
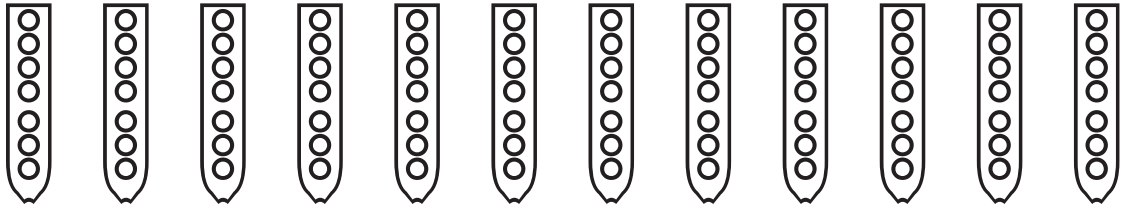
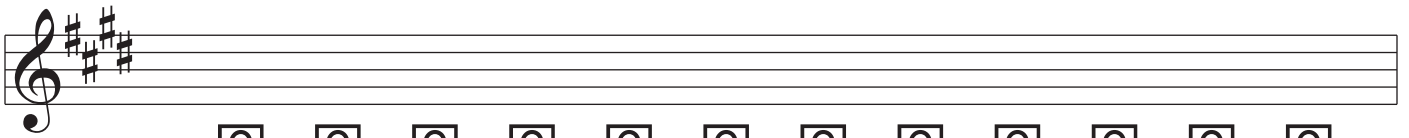
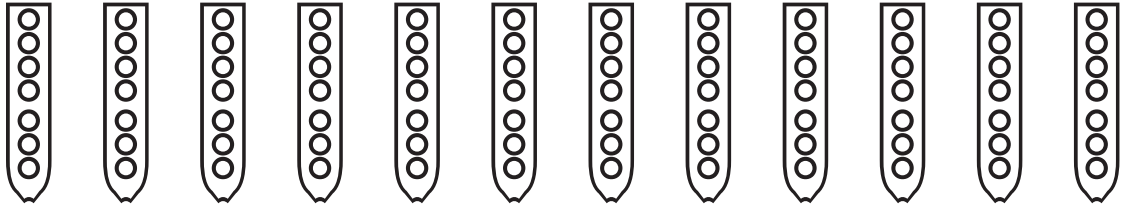
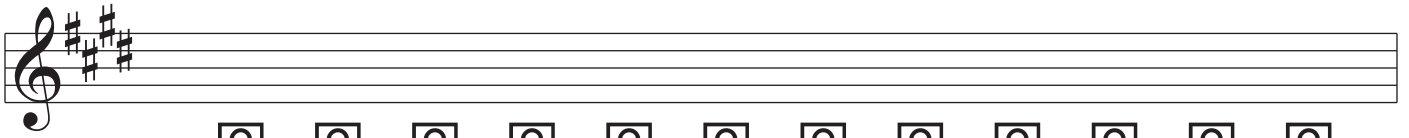
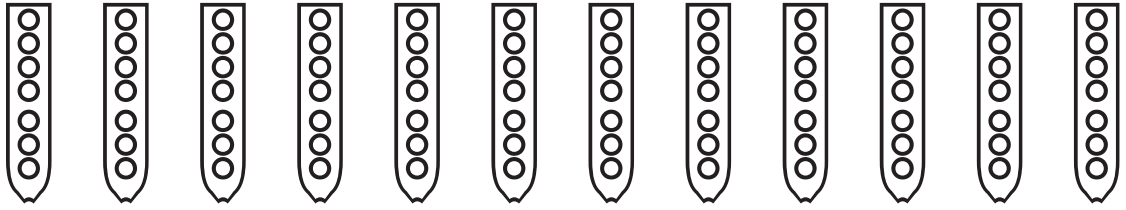
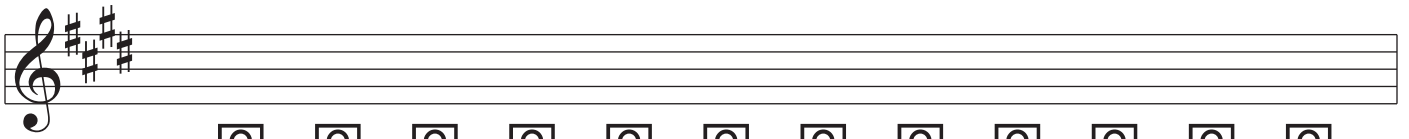


---

Nakai Tablature for Native American Flute

---

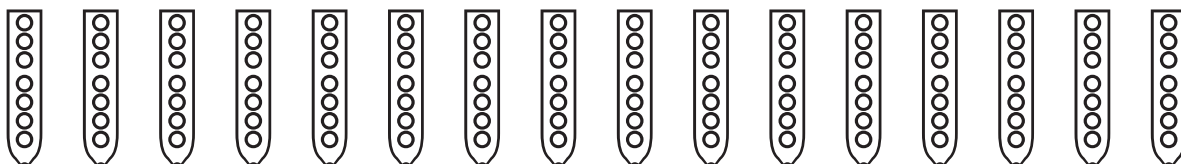
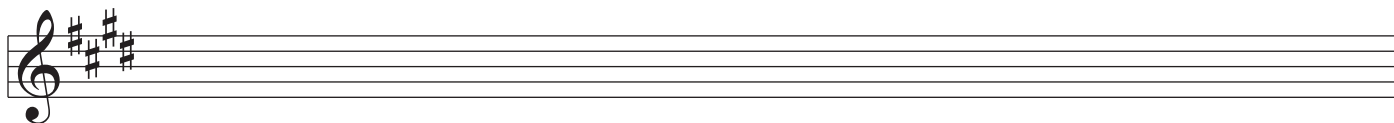
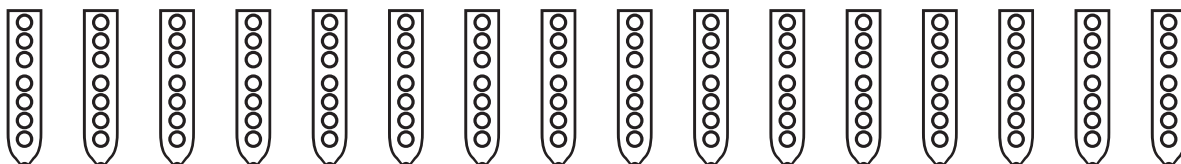
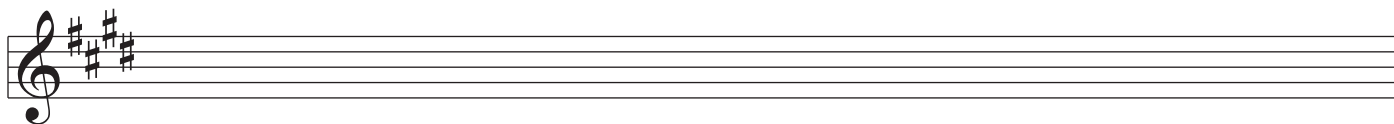
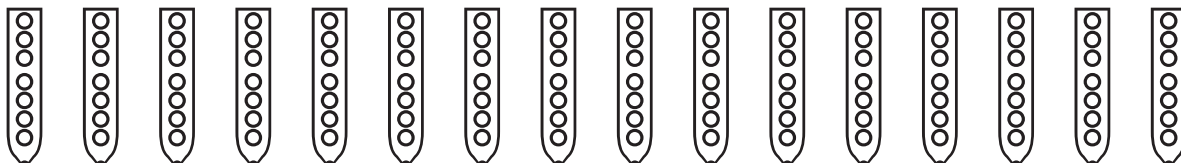
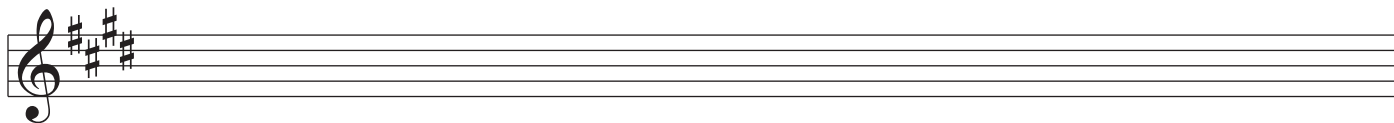
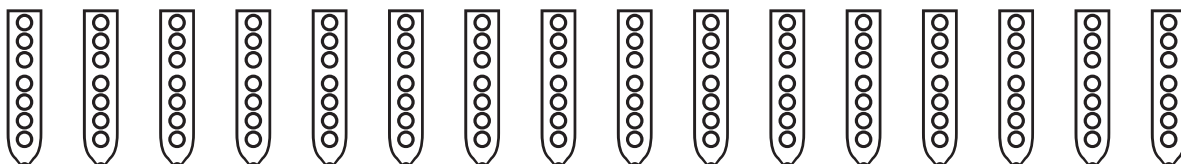
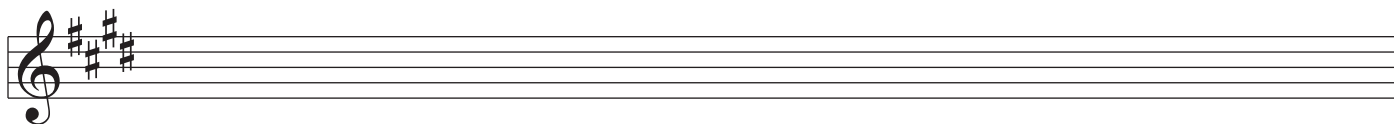
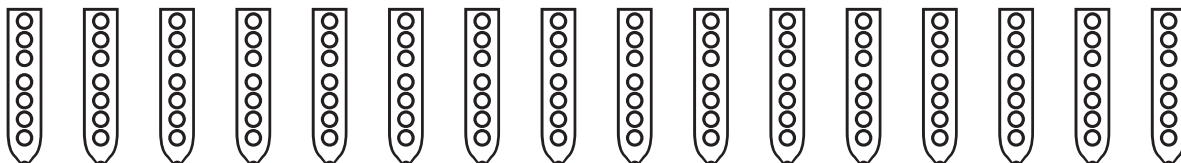
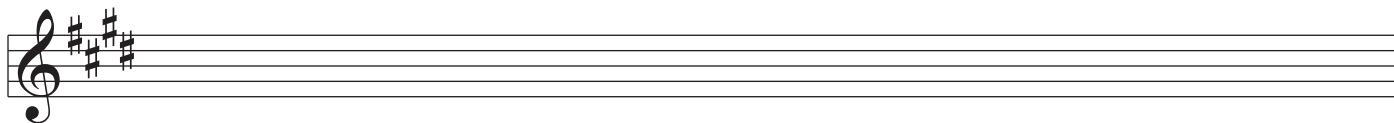


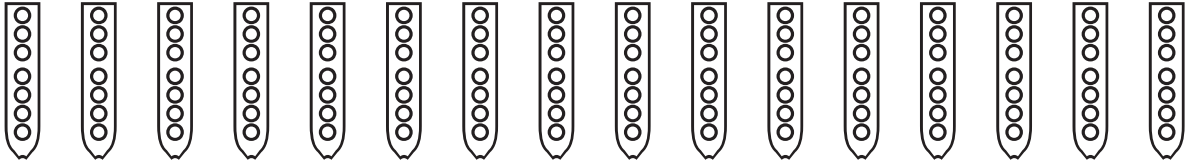
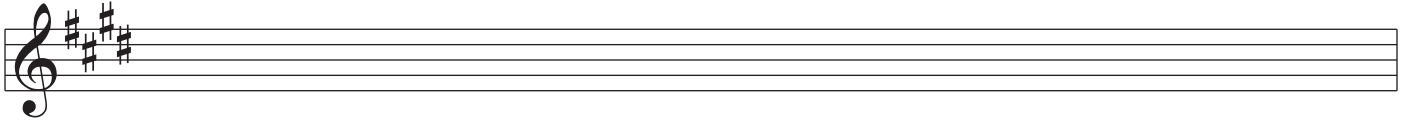
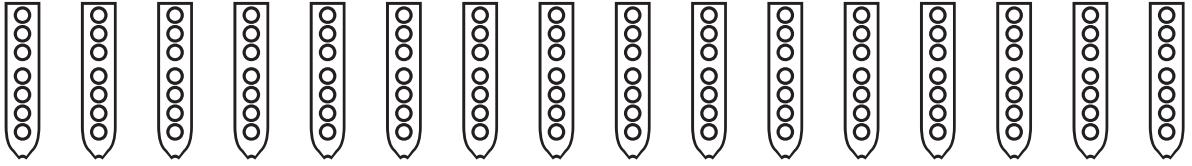
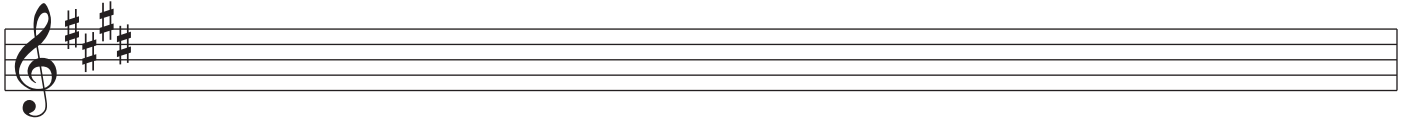
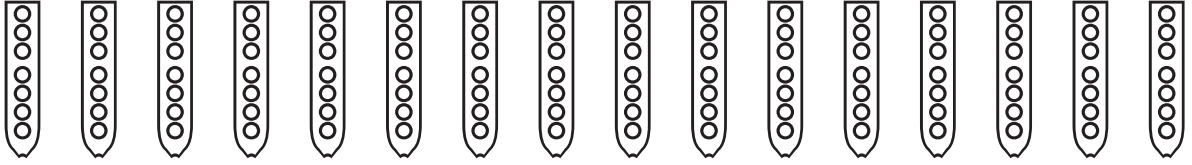
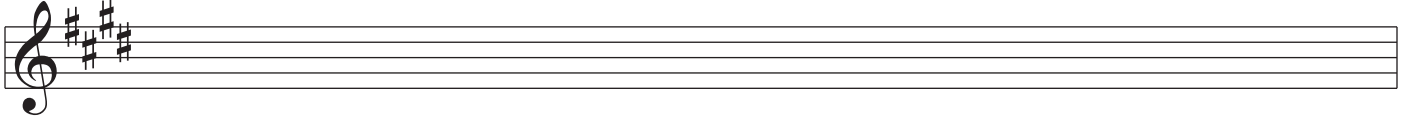
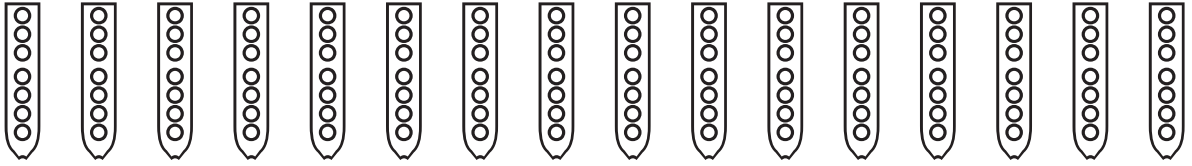
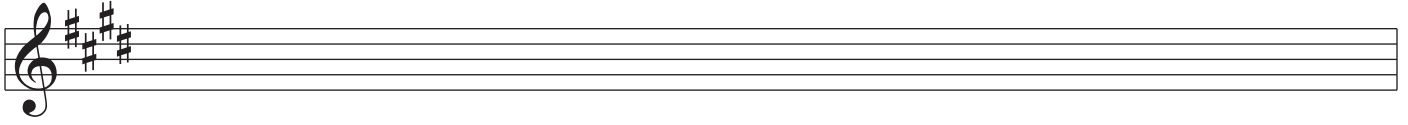
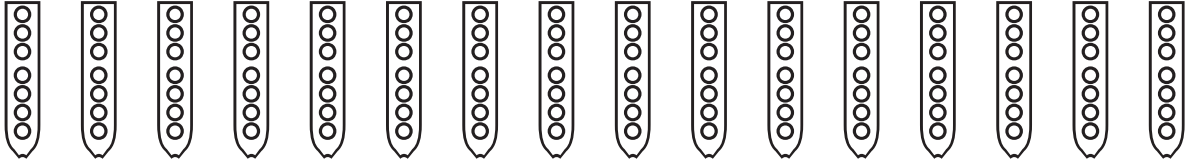
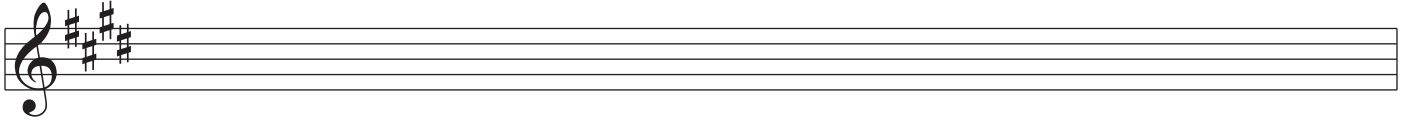
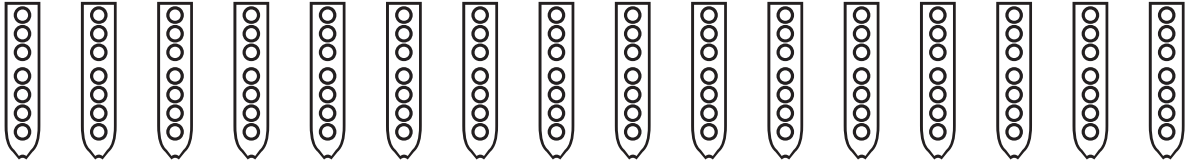
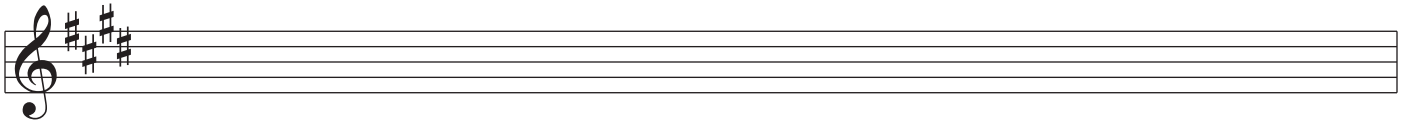


---

Nakai Tablature for Native American Flute

---

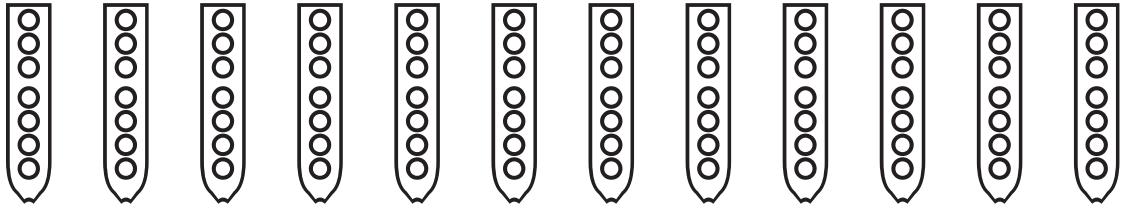
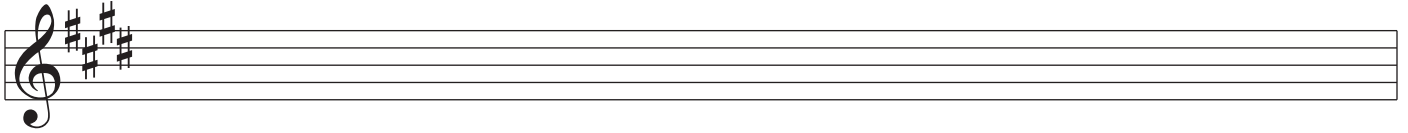
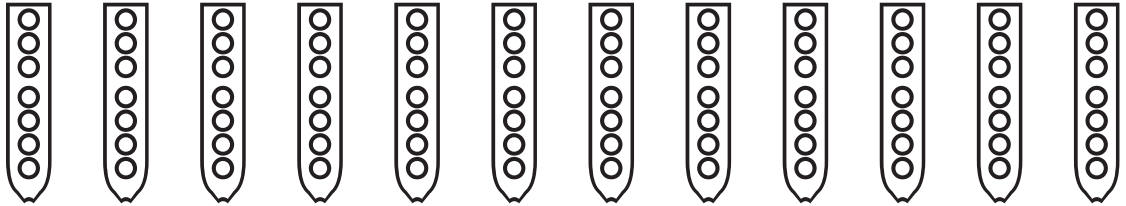
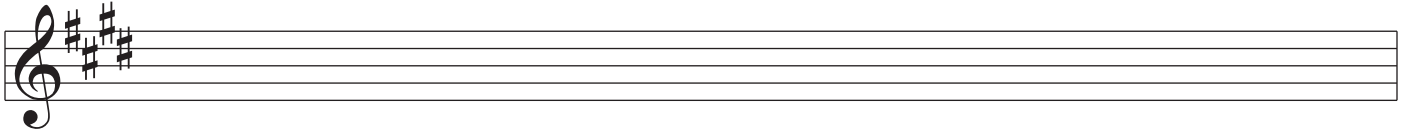
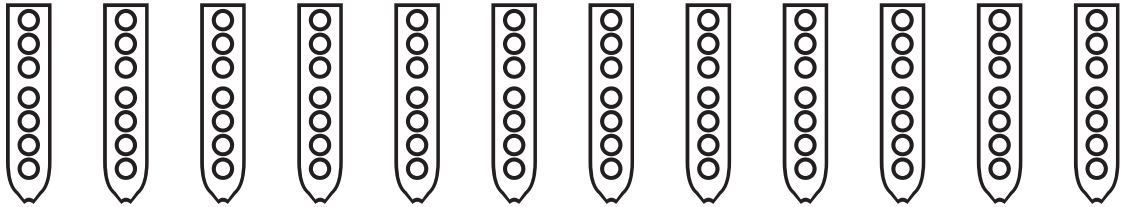
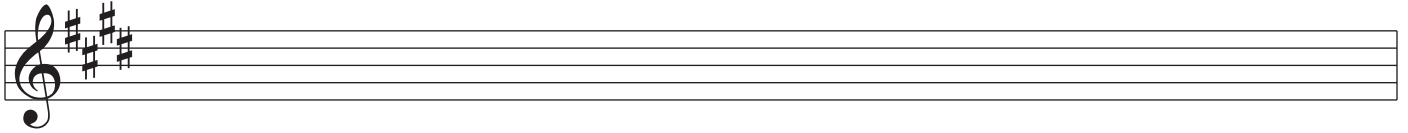
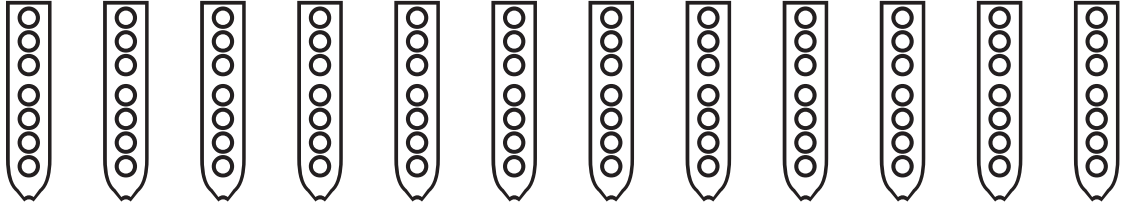
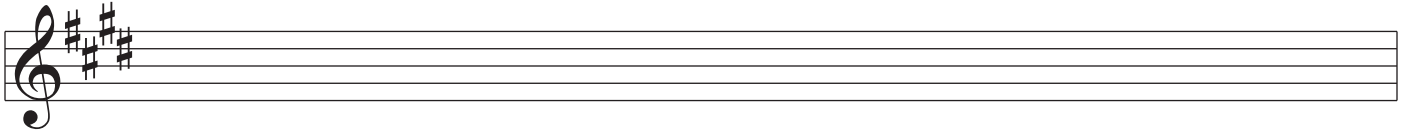




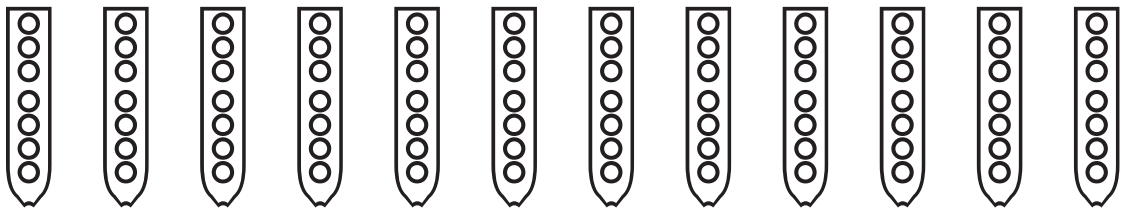
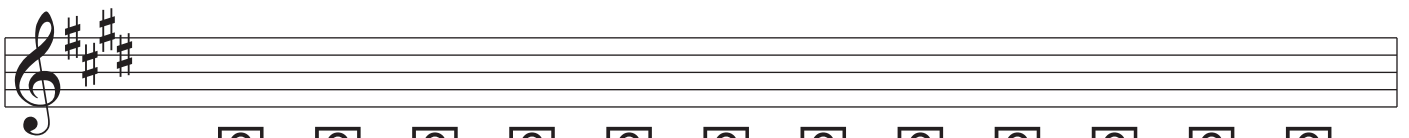
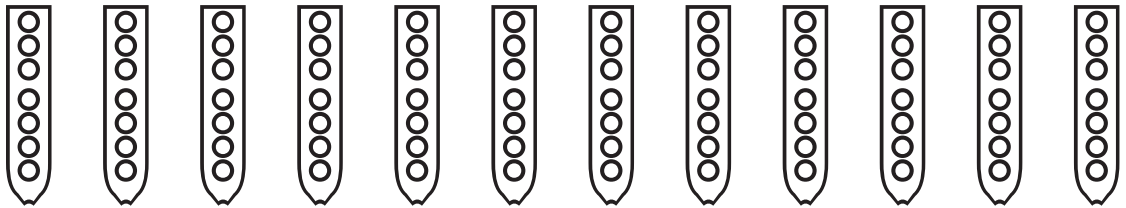
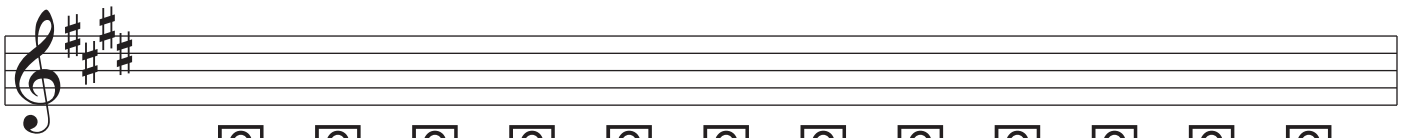
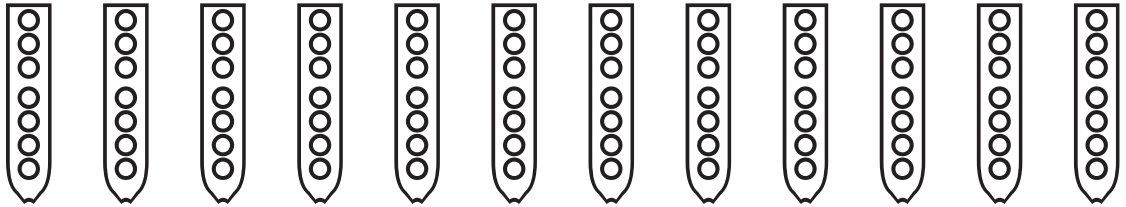
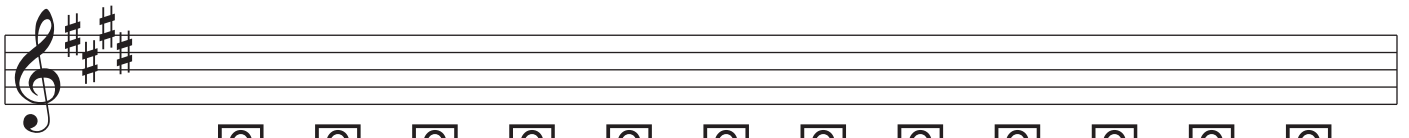
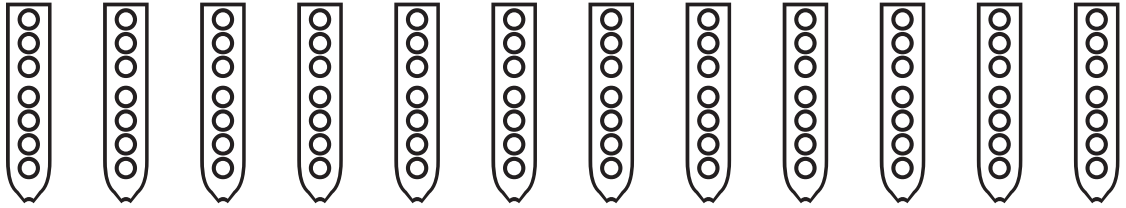
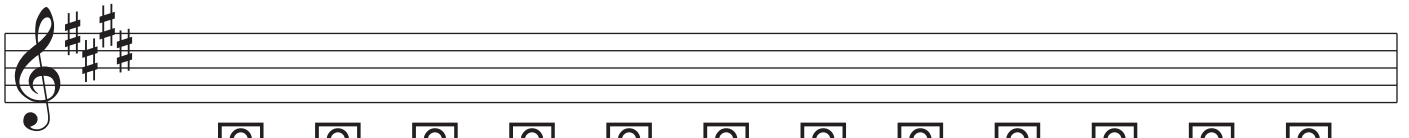
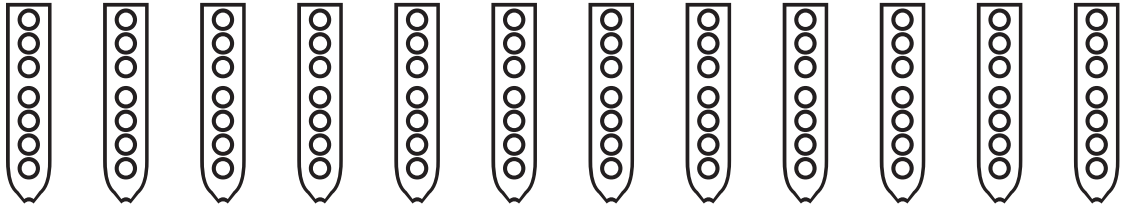
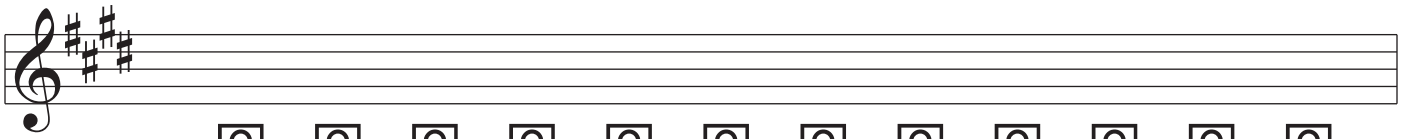
---

Nakai Tablature for Native American Flute

---



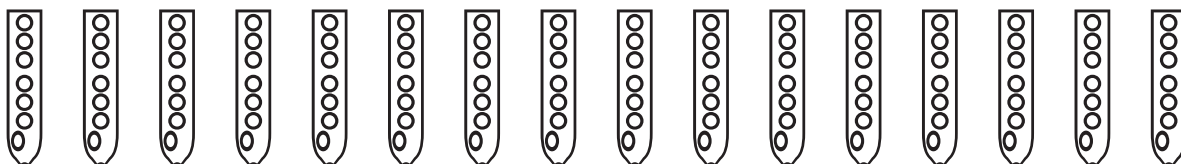
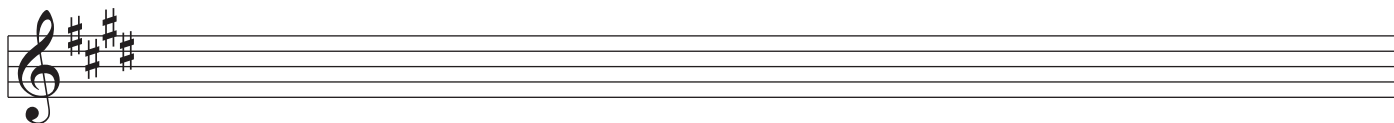
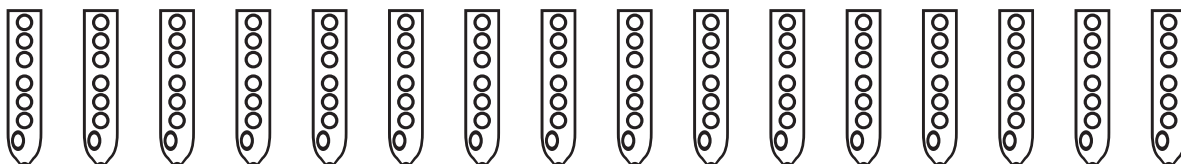
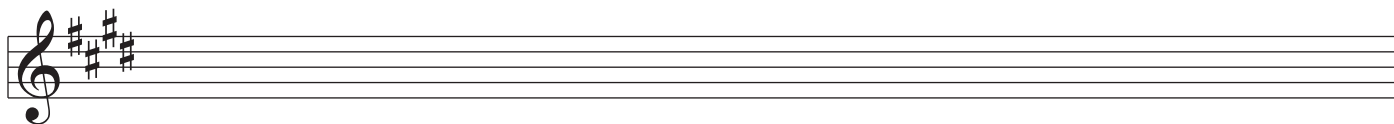
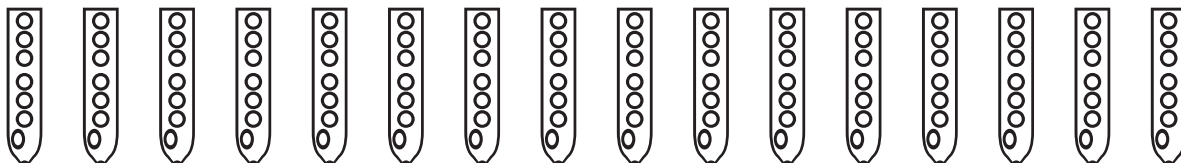
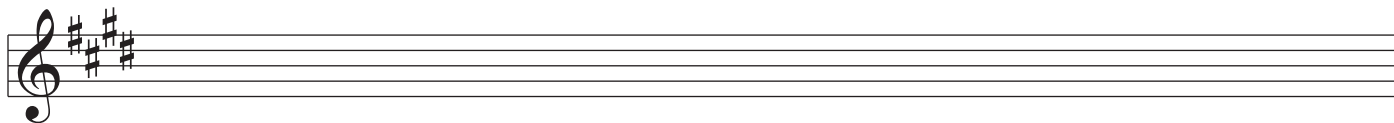
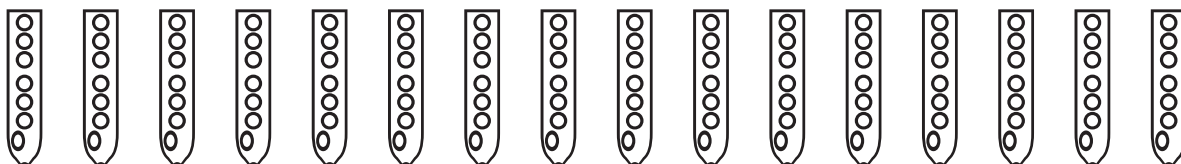
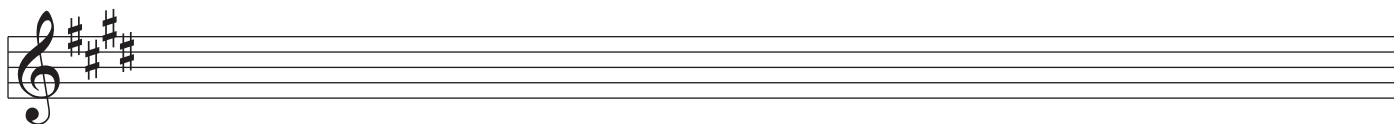
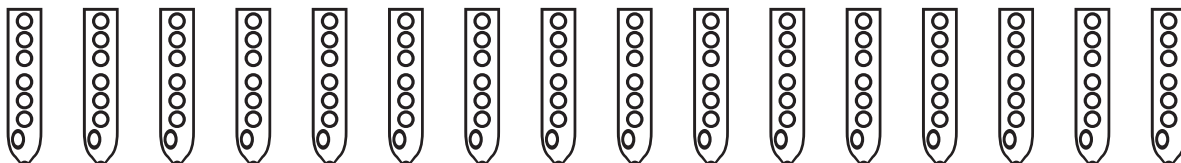
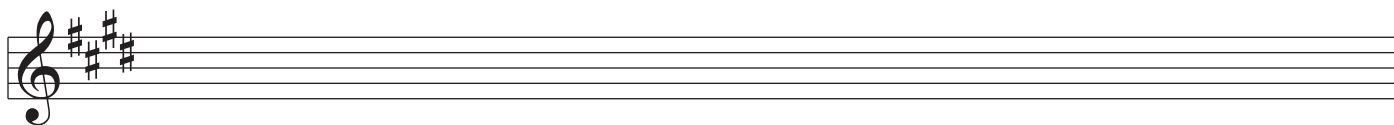


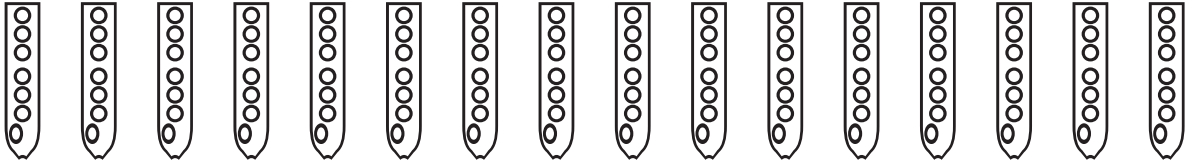
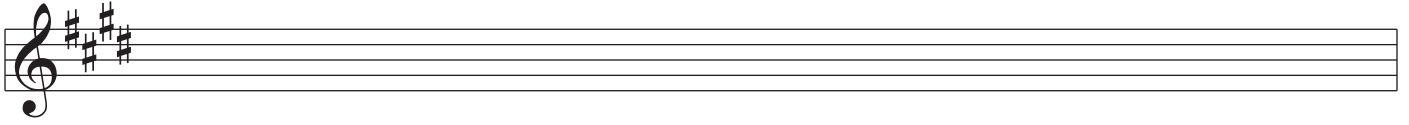
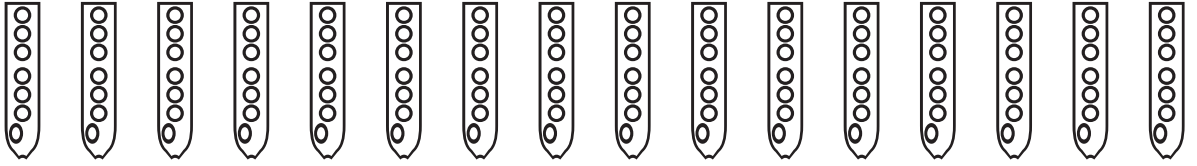
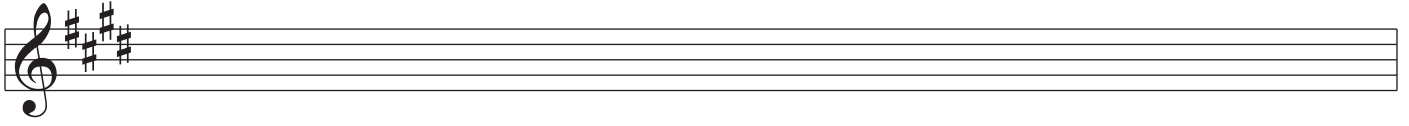
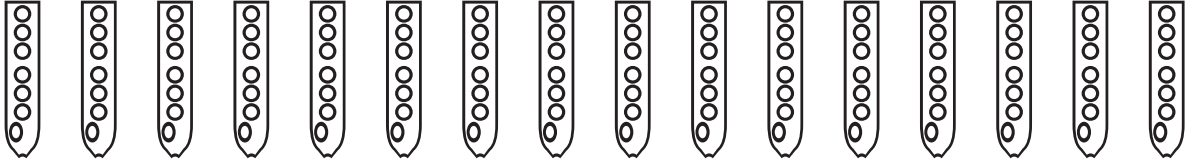
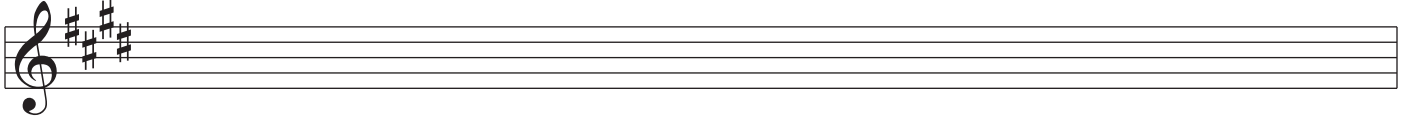
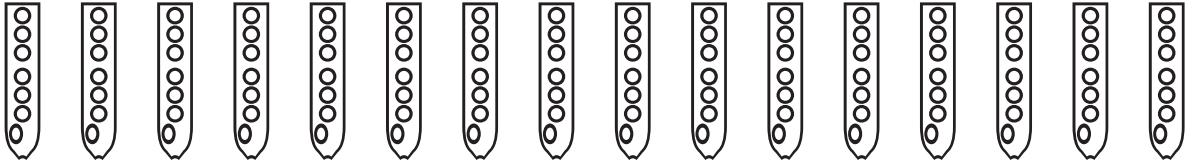
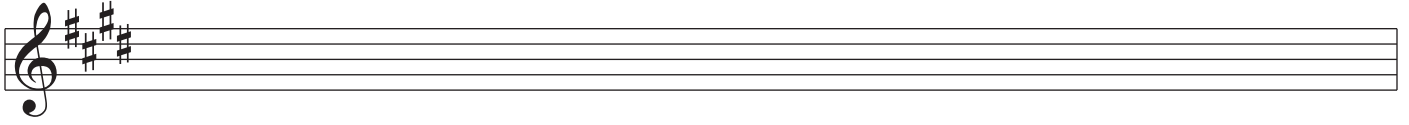
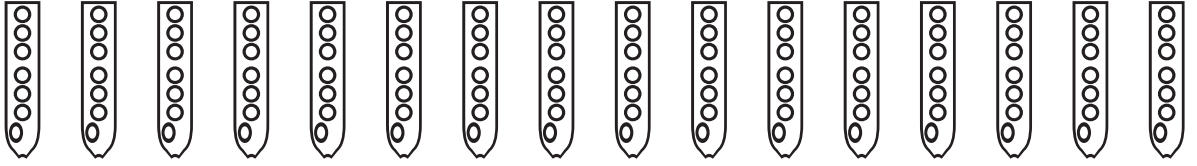
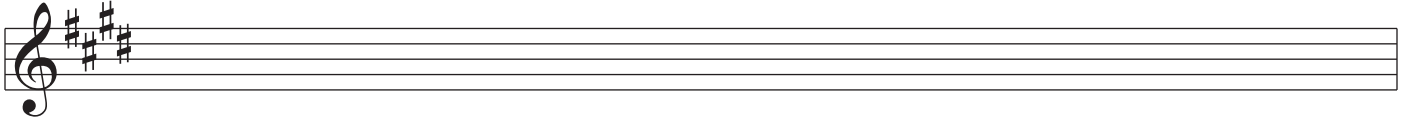
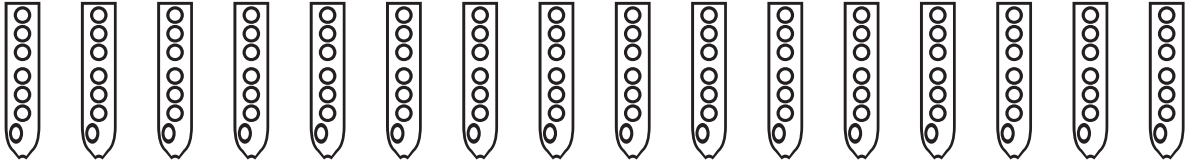
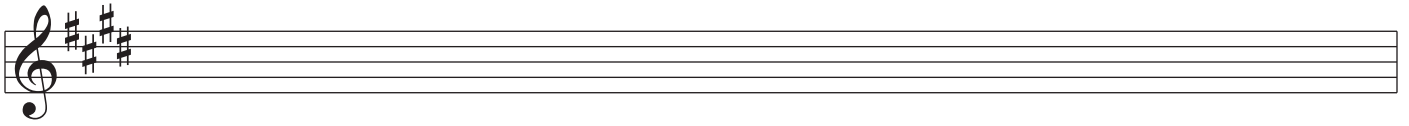


---

Nakai Tablature for Native American Flute

---

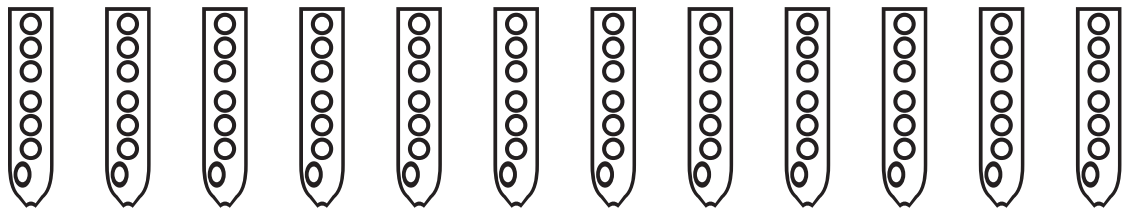
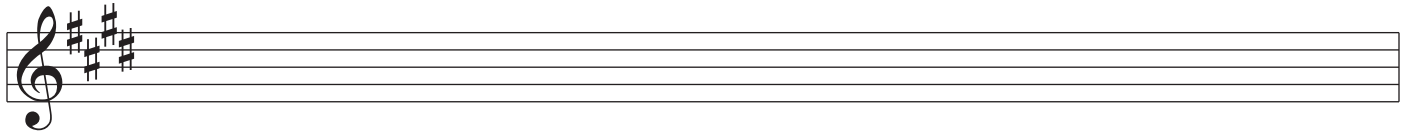
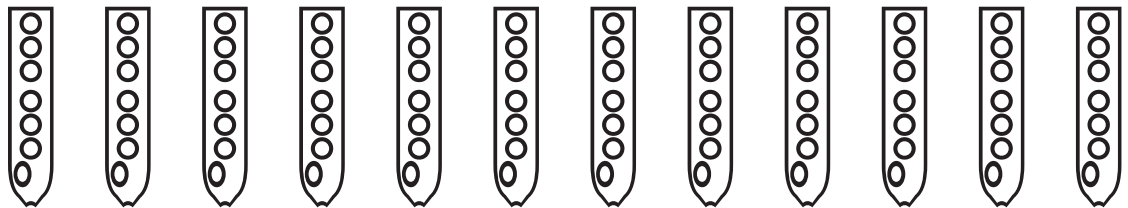
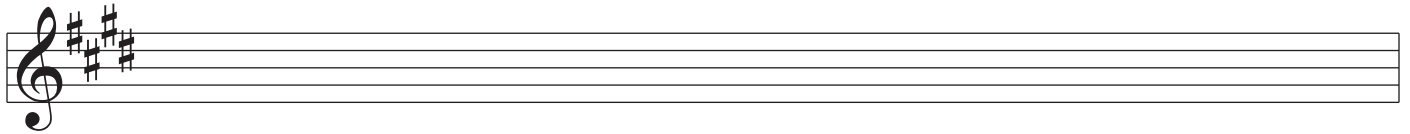
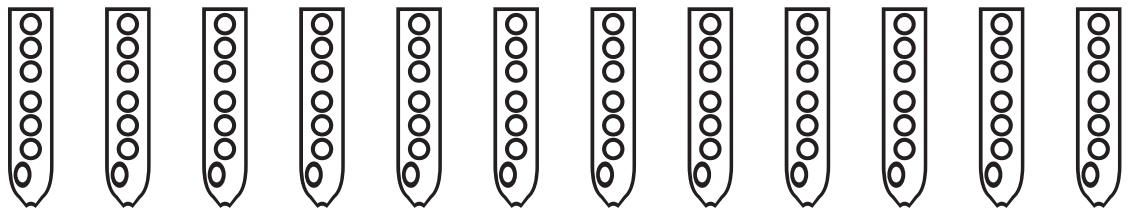
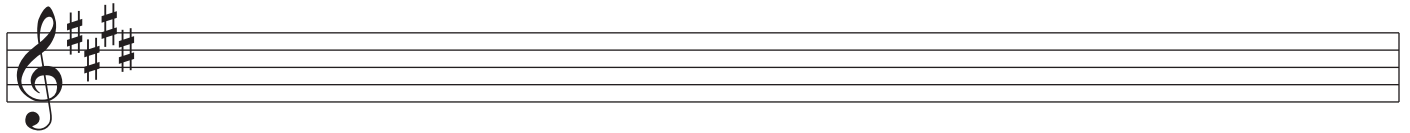
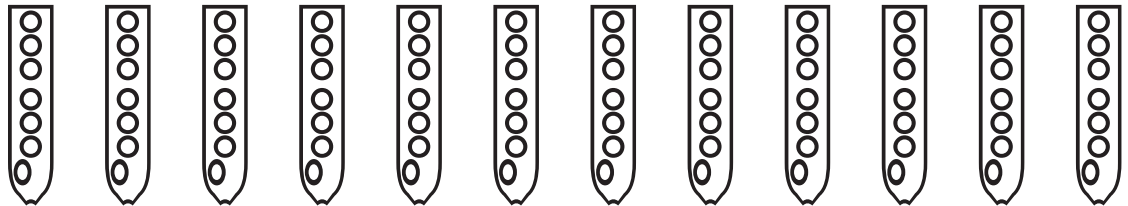
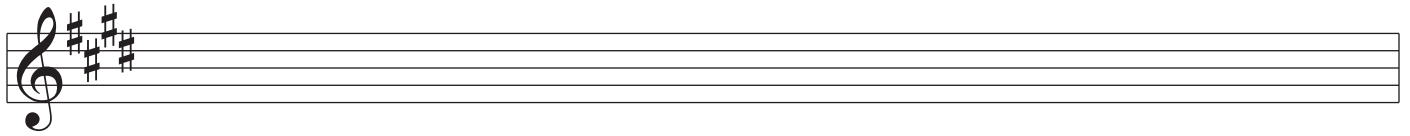


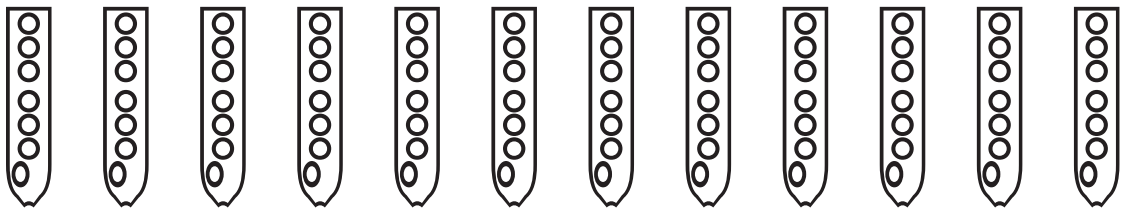
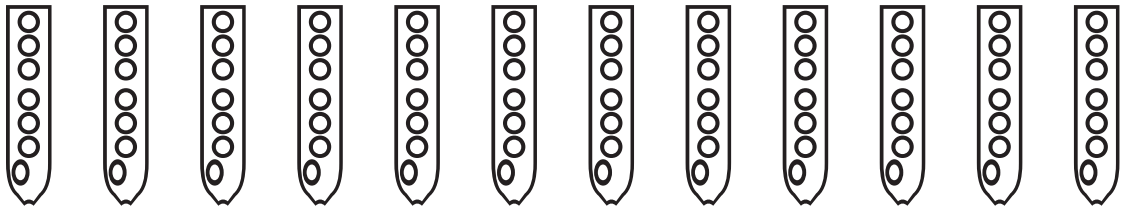
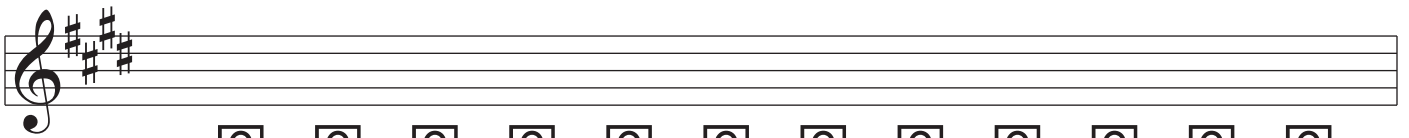
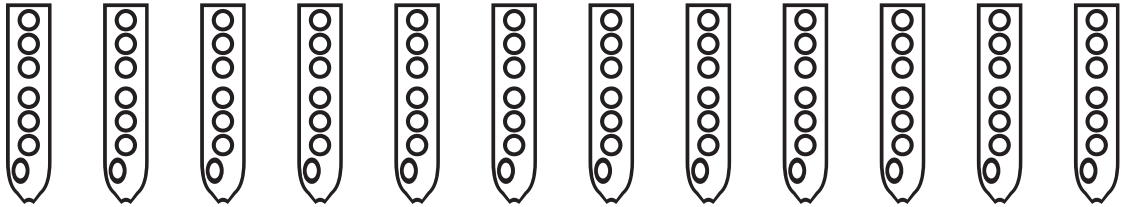
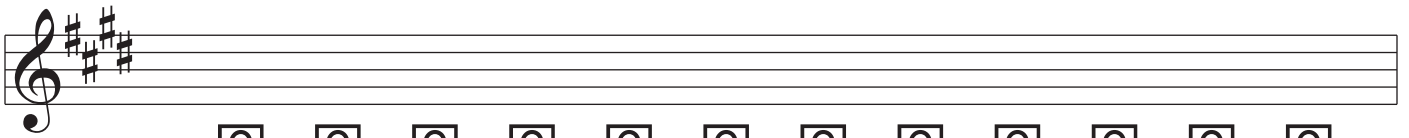
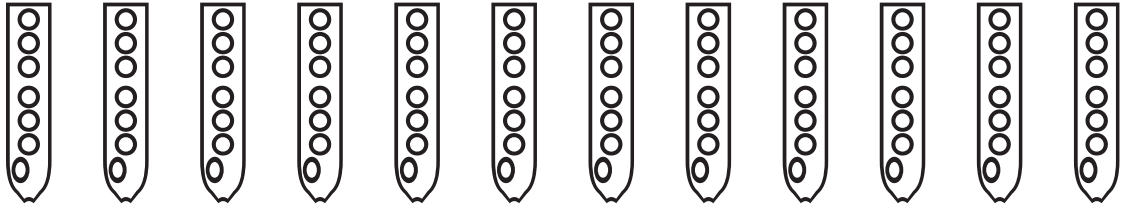
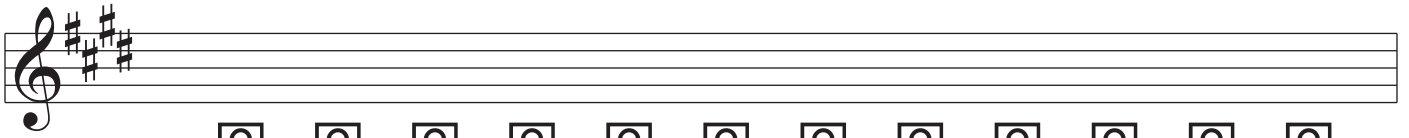
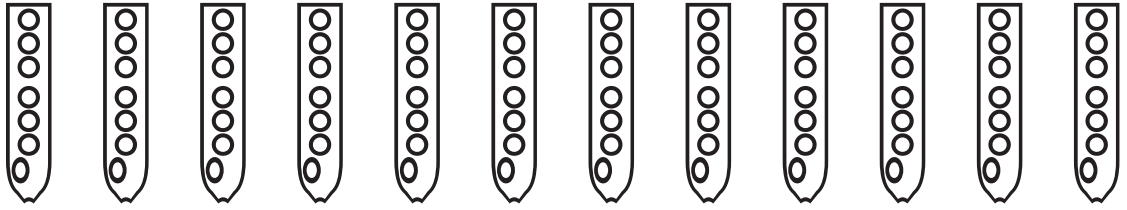
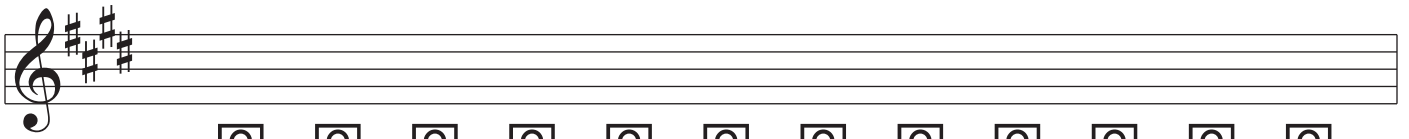


---

Nakai Tablature for Native American Flute

---

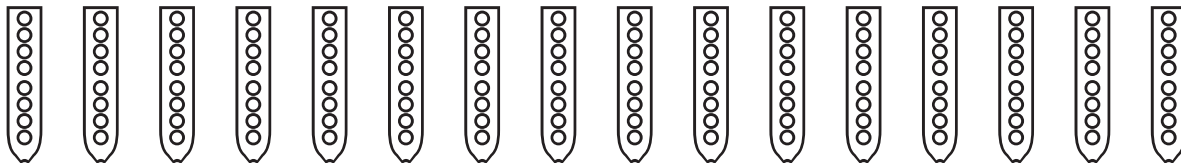
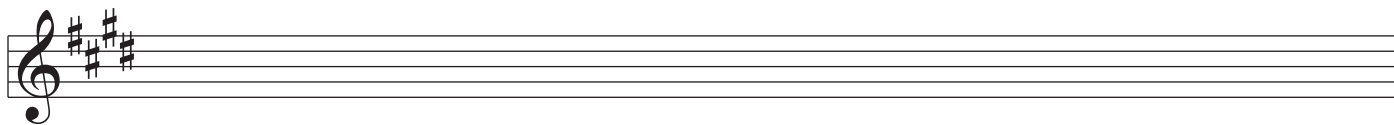
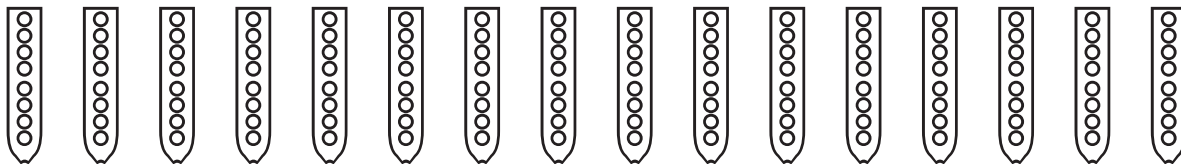
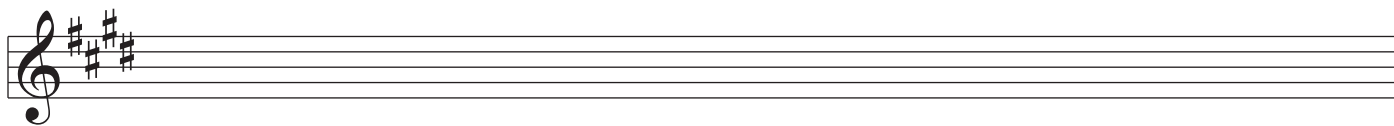
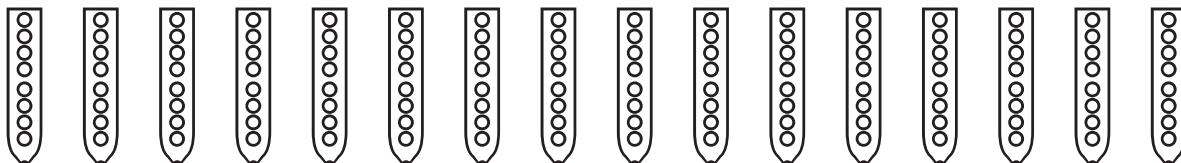
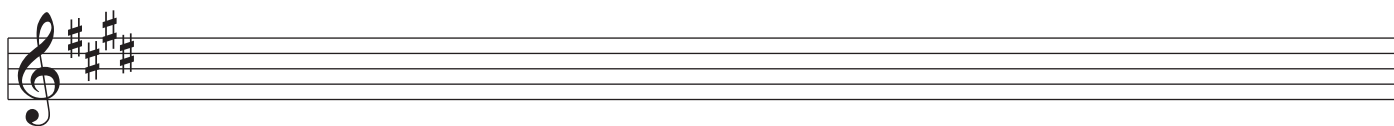
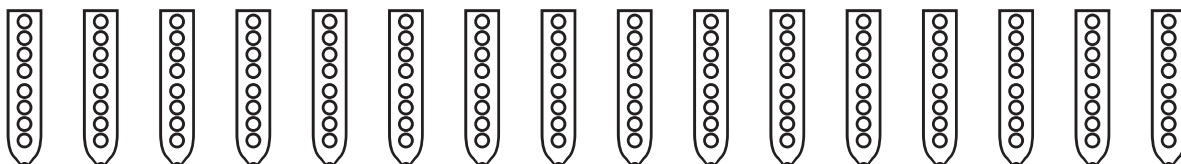
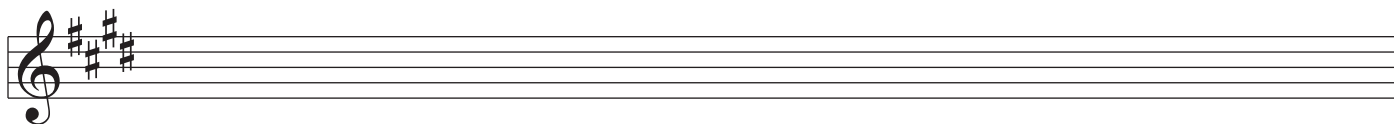
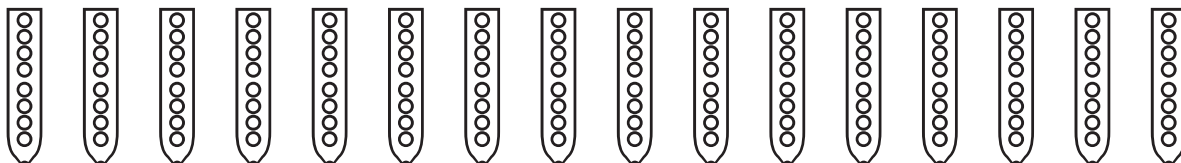
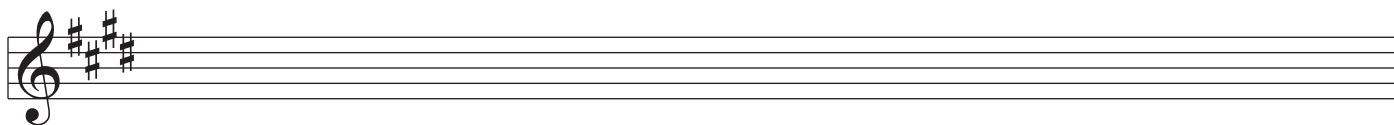


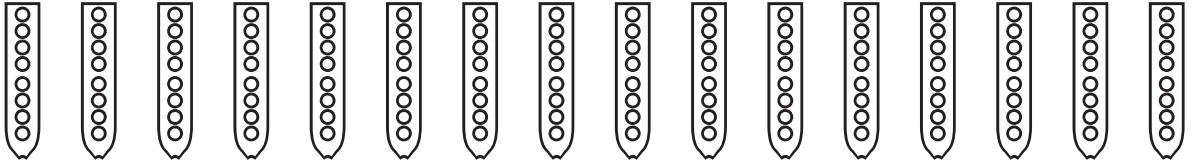
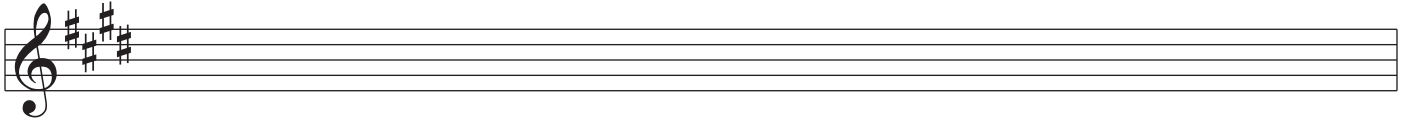
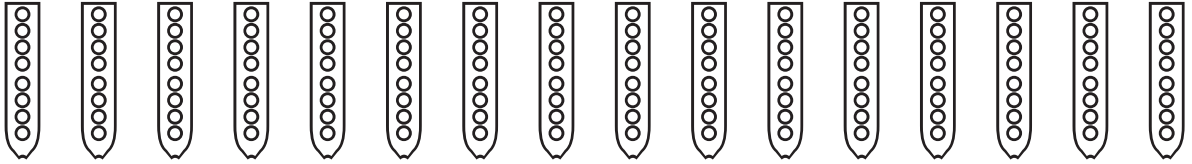
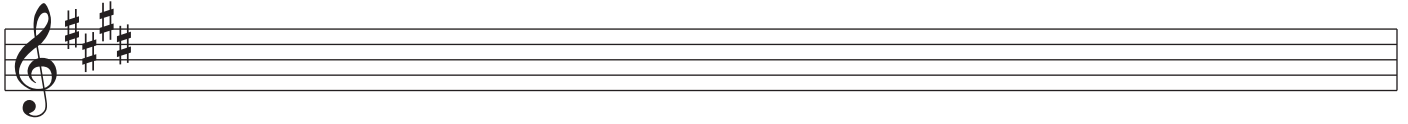
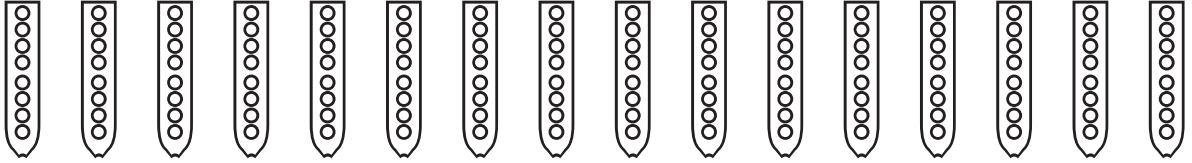
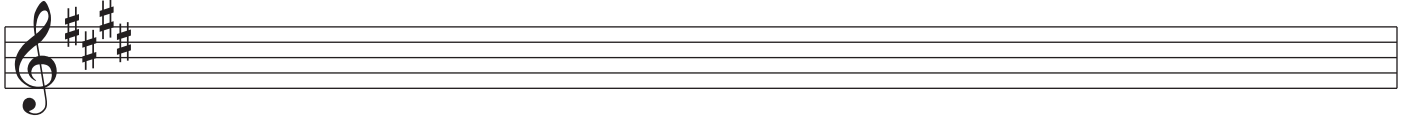
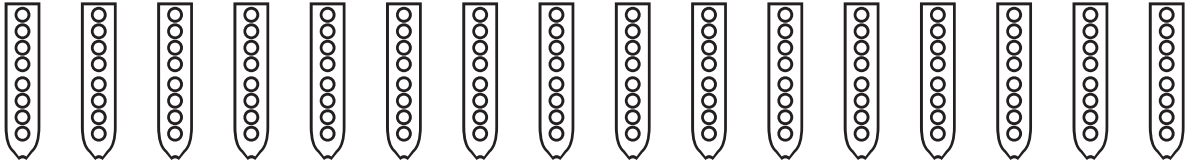
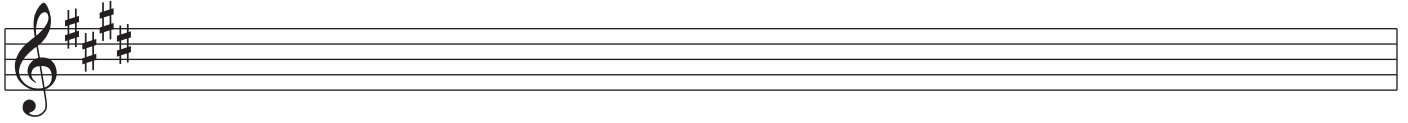
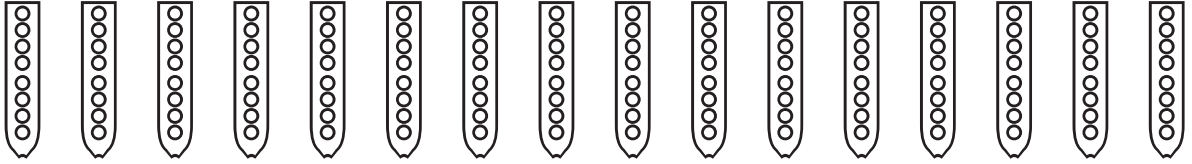
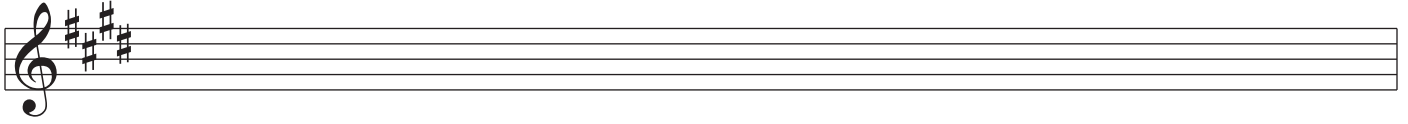
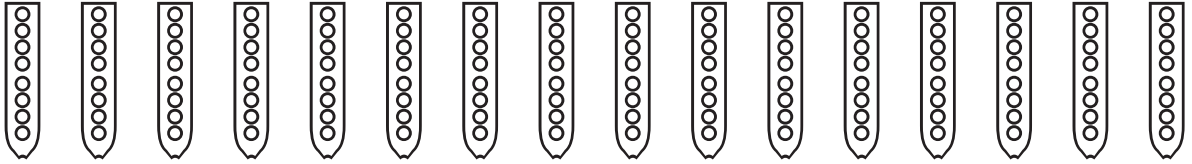
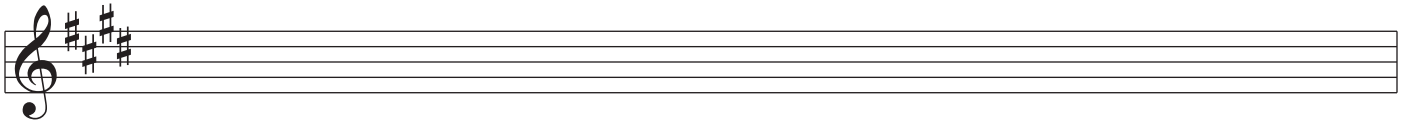


---

Nakai Tablature for Native American Flute

---

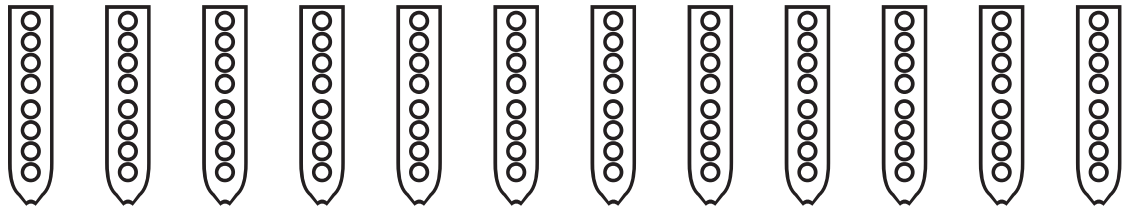
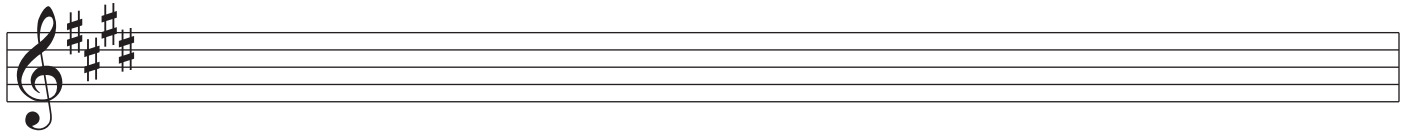
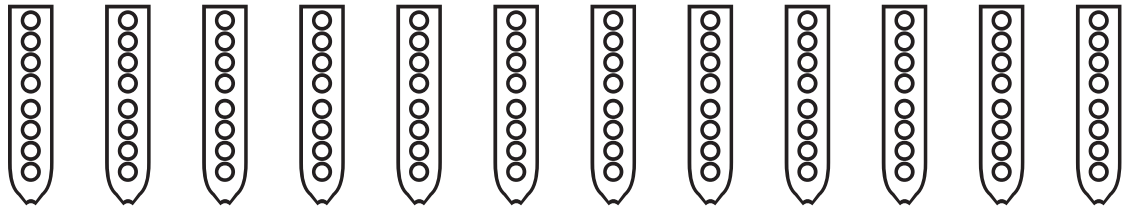
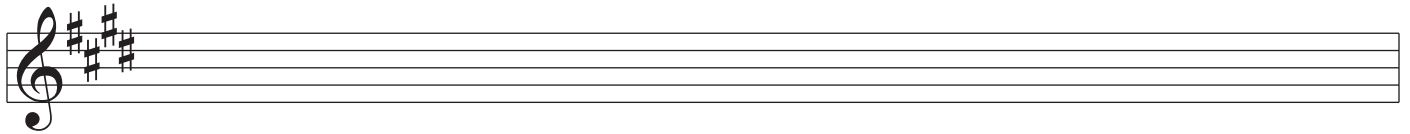
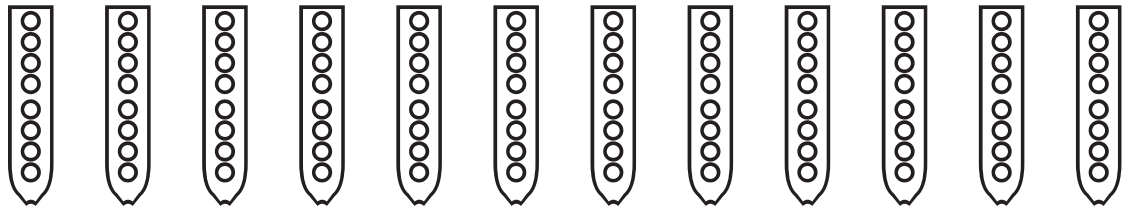
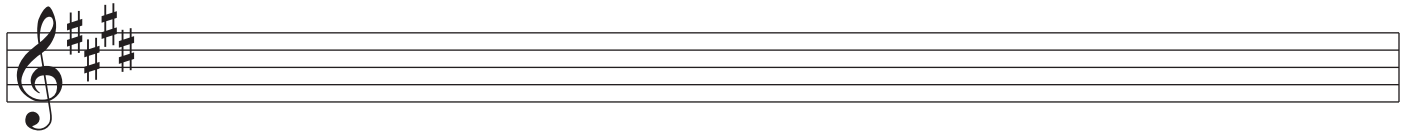
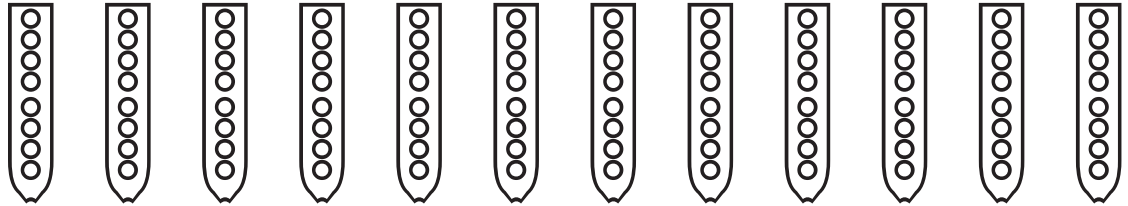
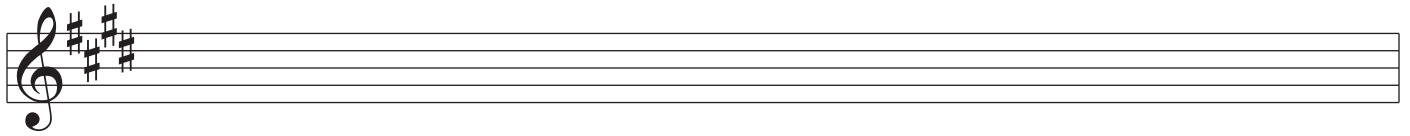




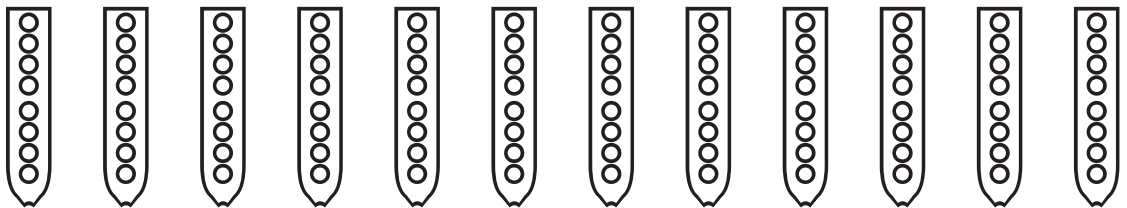
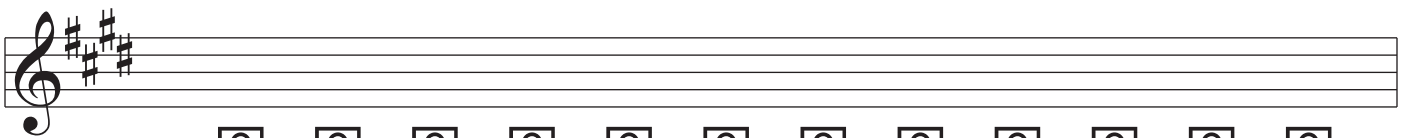
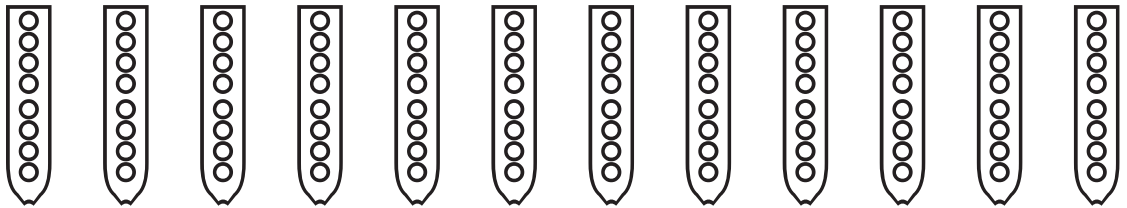
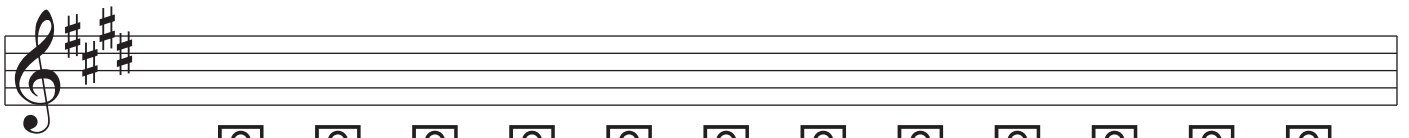
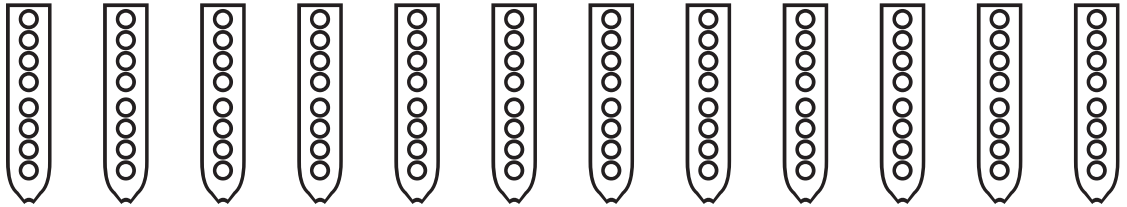
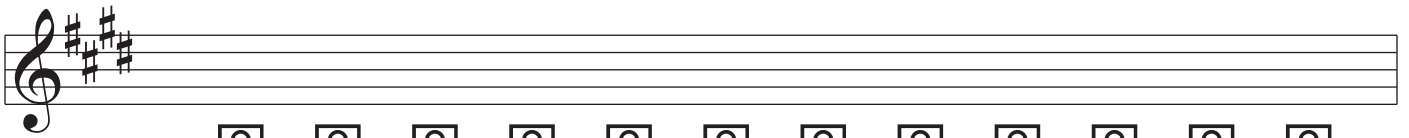
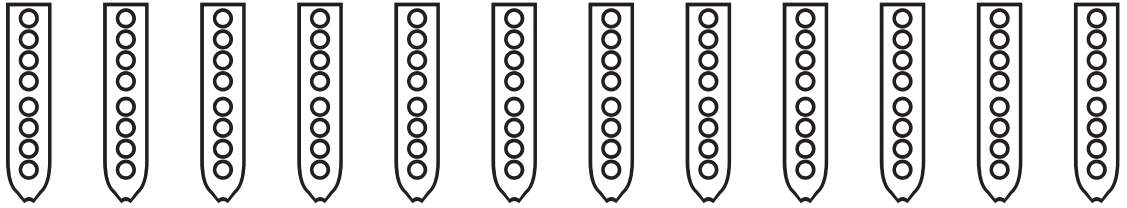
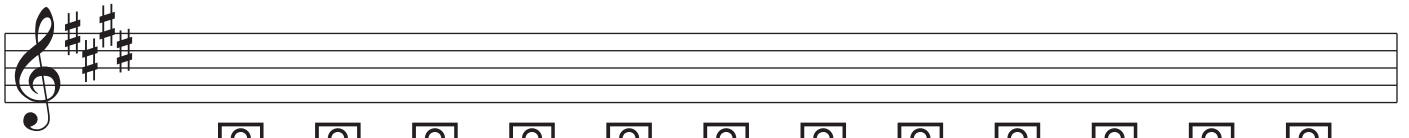
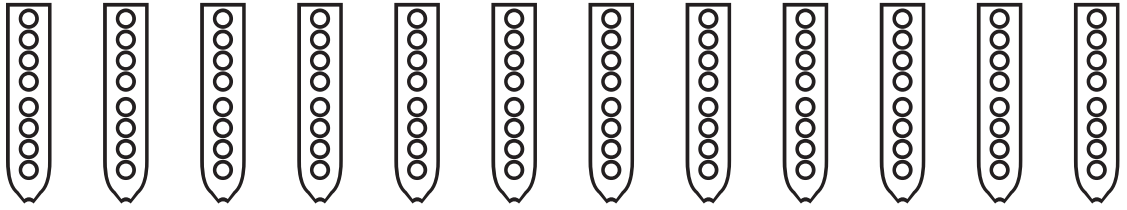
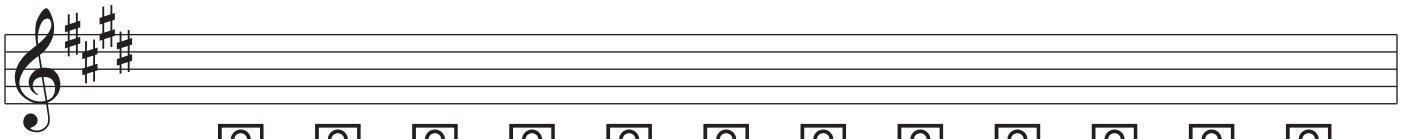
---

Nakai Tablature for Native American Flute

---







---

Nakai Tablature for Native American Flute

---

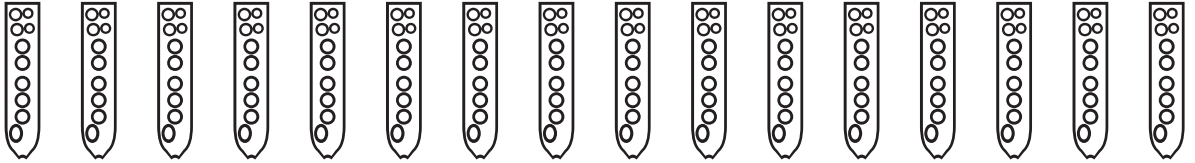
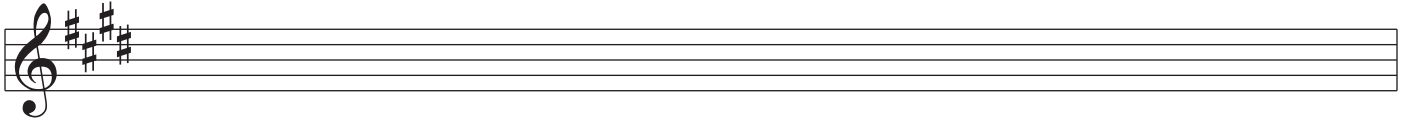
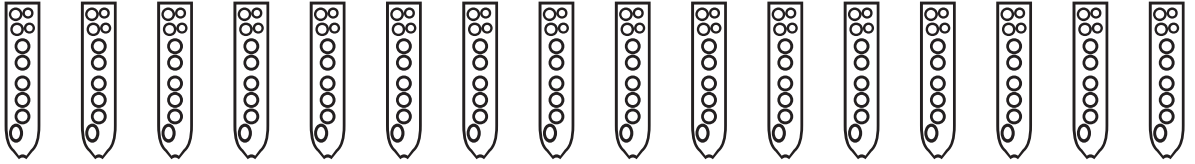
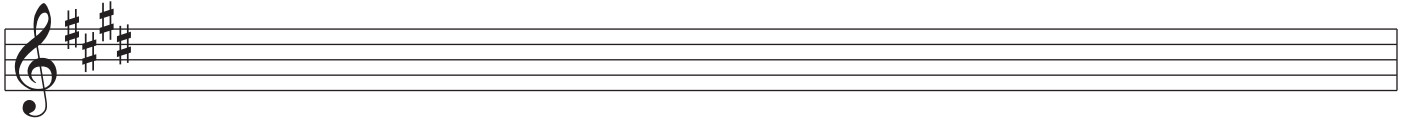
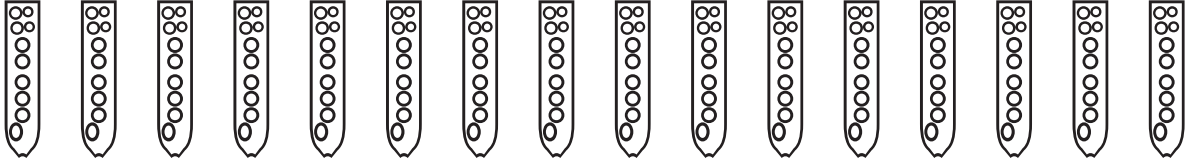
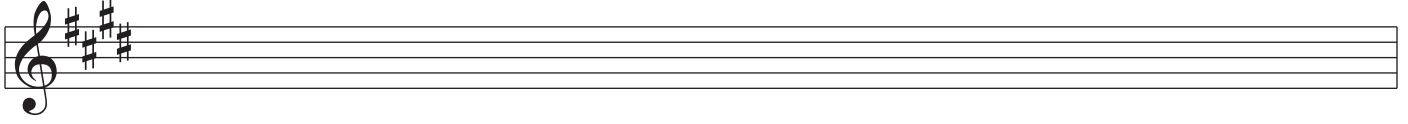
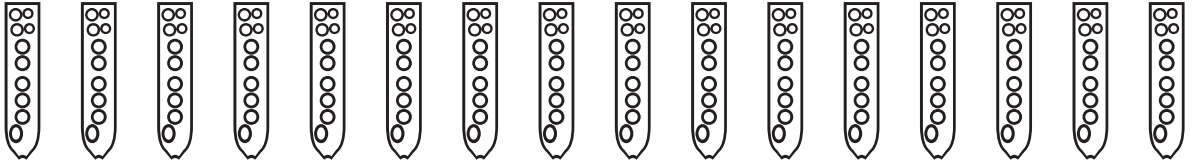
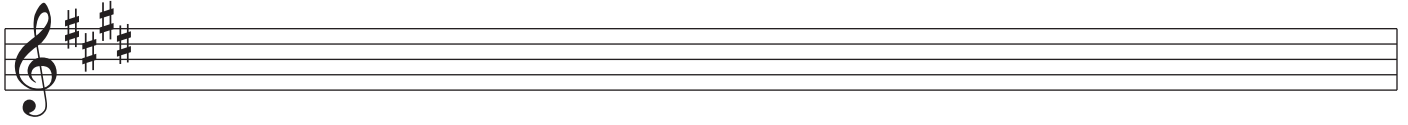
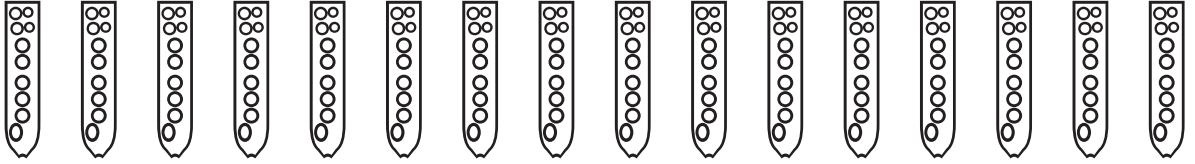
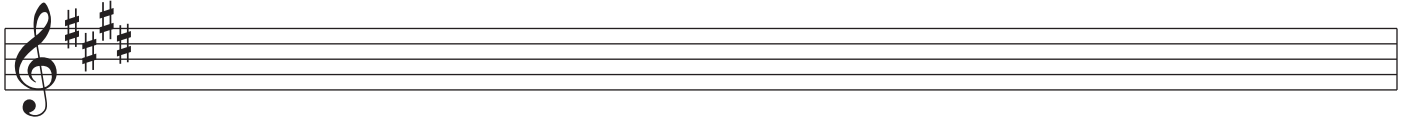
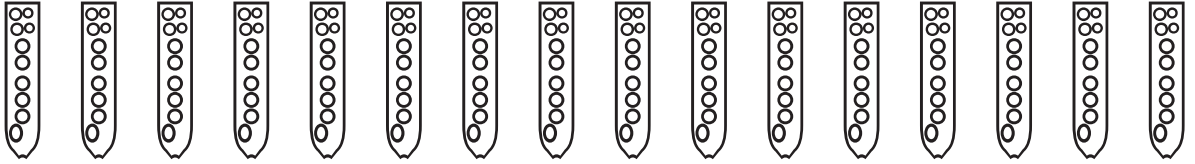
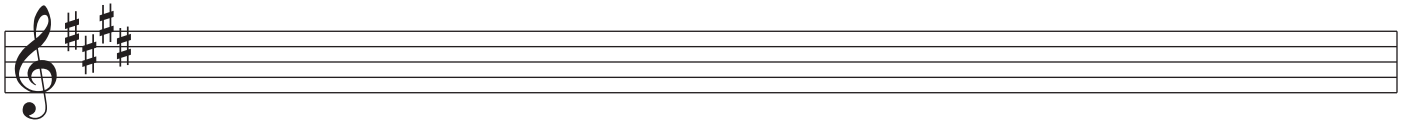
Musical staff with treble clef and key signature of three sharps (F#, C#, G#). Below the staff are 15 vertical tablature boxes, each containing a sequence of 12 circles representing finger positions on the flute.

Musical staff with treble clef and key signature of three sharps (F#, C#, G#). Below the staff are 15 vertical tablature boxes, each containing a sequence of 12 circles representing finger positions on the flute.

Musical staff with treble clef and key signature of three sharps (F#, C#, G#). Below the staff are 15 vertical tablature boxes, each containing a sequence of 12 circles representing finger positions on the flute.

Musical staff with treble clef and key signature of three sharps (F#, C#, G#). Below the staff are 15 vertical tablature boxes, each containing a sequence of 12 circles representing finger positions on the flute.

Musical staff with treble clef and key signature of three sharps (F#, C#, G#). Below the staff are 15 vertical tablature boxes, each containing a sequence of 12 circles representing finger positions on the flute.



---

Nakai Tablature for Native American Flute

---

A musical staff with a treble clef and a key signature of three sharps (F#, C#, G#). Below the staff are 12 vertical flute diagrams, each with 12 finger holes and a thumb hole.

A musical staff with a treble clef and a key signature of three sharps (F#, C#, G#). Below the staff are 12 vertical flute diagrams, each with 12 finger holes and a thumb hole.

A musical staff with a treble clef and a key signature of three sharps (F#, C#, G#). Below the staff are 12 vertical flute diagrams, each with 12 finger holes and a thumb hole.

A musical staff with a treble clef and a key signature of three sharps (F#, C#, G#). Below the staff are 12 vertical flute diagrams, each with 12 finger holes and a thumb hole.

