



FLUTOPEDIA
an Encyclopedia
for the
NATIVE
AMERICAN
FLUTE

BLANK NAF TABLATURE

A4 (210 x 297 mm) size paper - Mouth-end Down

This PDF file has templates for writing or transcribing sheet music for the Native American Flute. Each page has a blank staff for writing music in Nakai Tablature as well as finger diagrams with open holes that can be filled in by hand.

Versions are included for six-hole flutes, five-hole flutes, Hopi-style five-hole flutes, three variations of four-hole flutes (Mojave, Yuma, and “uneven”), and Papago three-hole flutes with and without a thumb hole. For each version has a small and a large variation, and two pages are provided for each: a “first page” with room for the title and author, and a “second page” that can be used for subsequent pages.

This PDF is part of a collection of Native American Flute resources available at the web site <http://www.Flutopedia.com/>. The Flutopedia web site includes, among many other things, an extensive set of finger diagram fonts for engraving sheet music that are similar to the finger diagrams in this document. All fonts have been embedded in this PDF file, so that it should display identically on various systems.

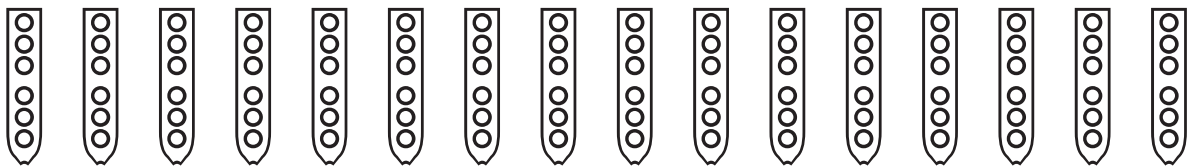
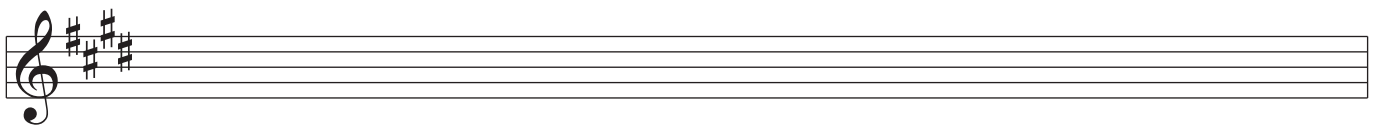
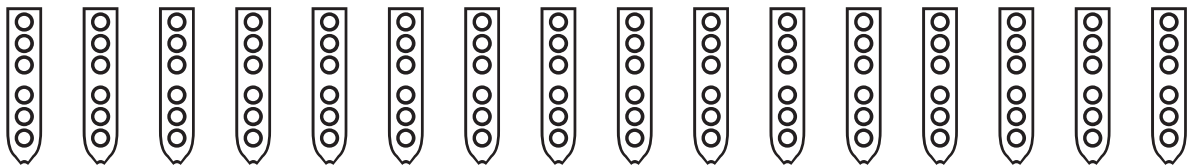
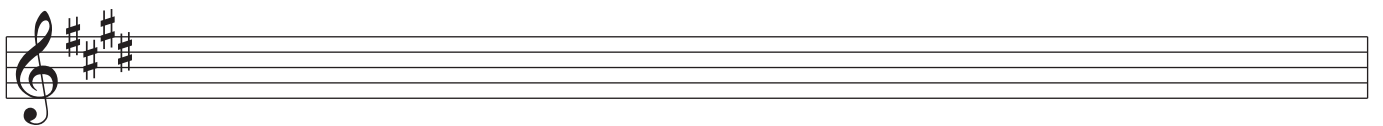
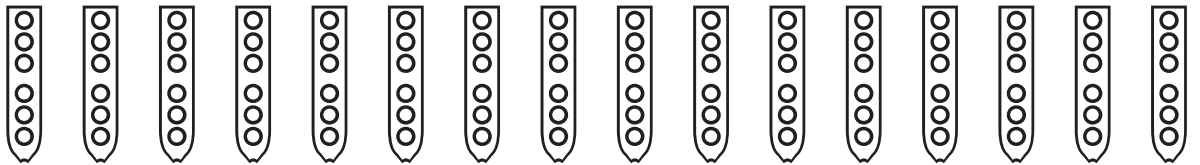
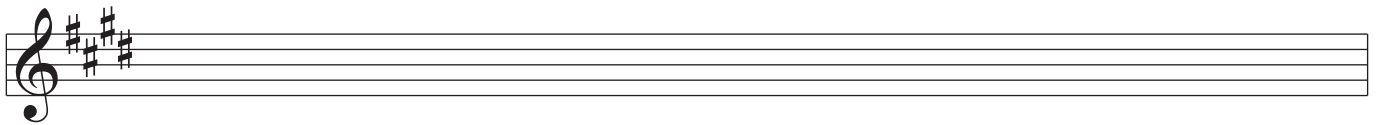
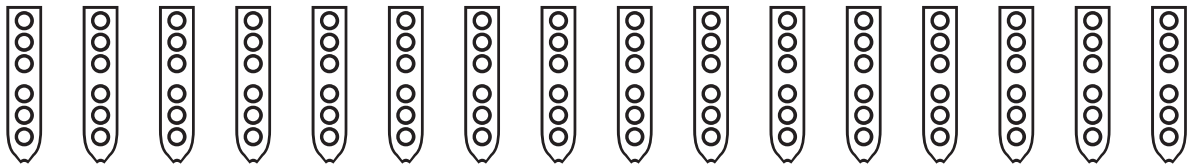
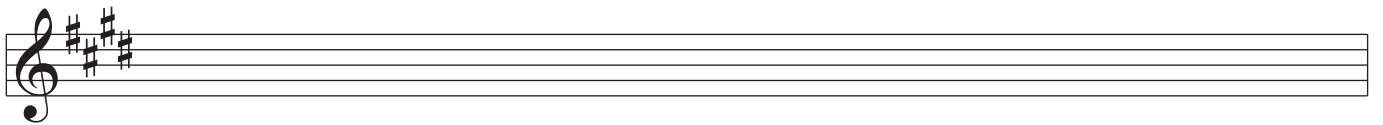
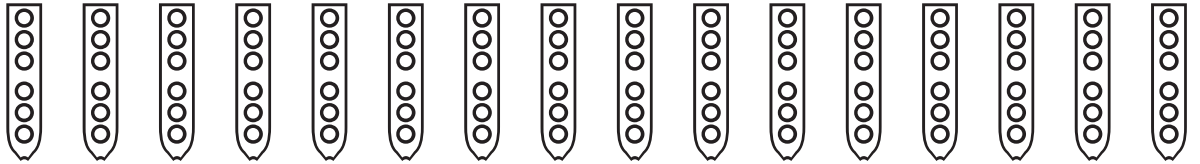
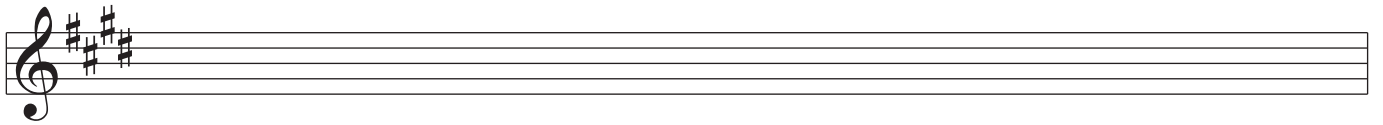
You are free to distribute unmodified versions of this document.

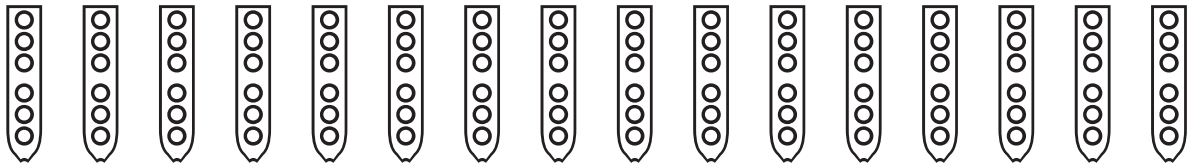
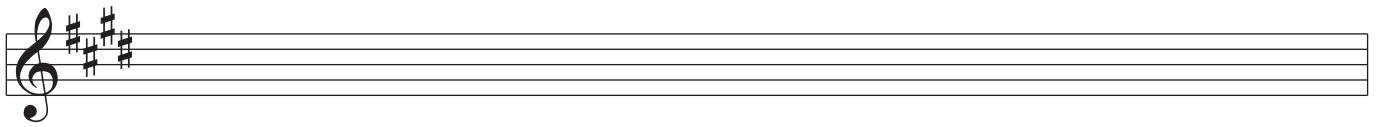
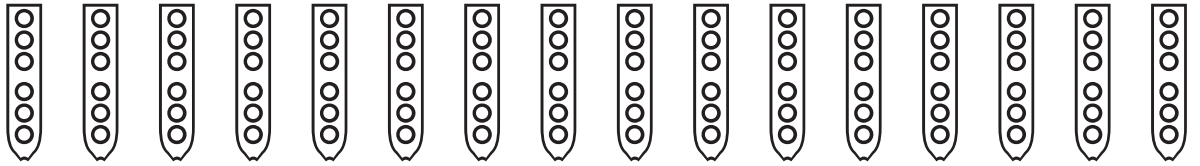
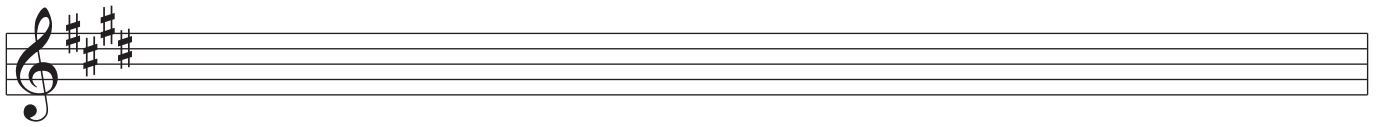
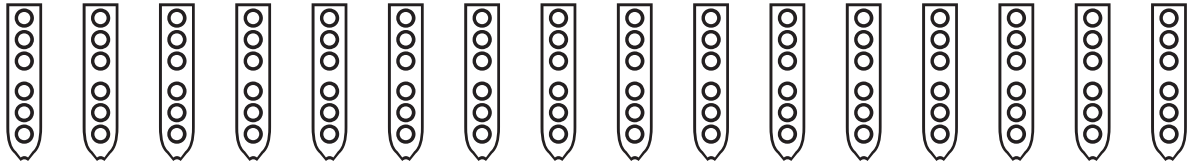
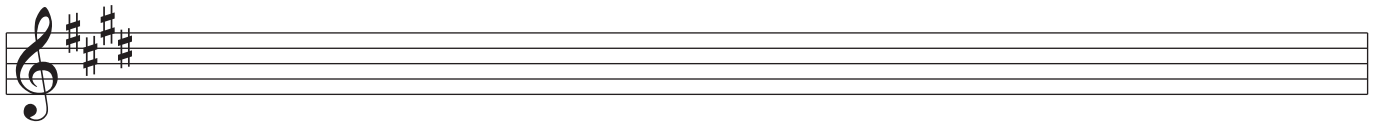
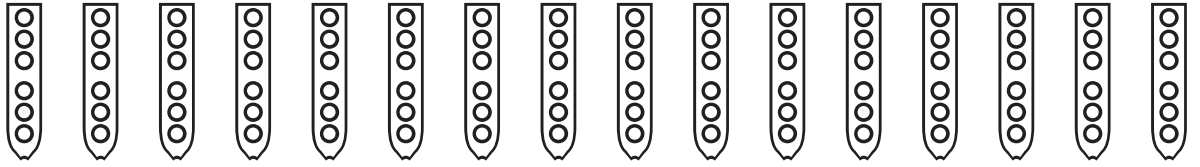
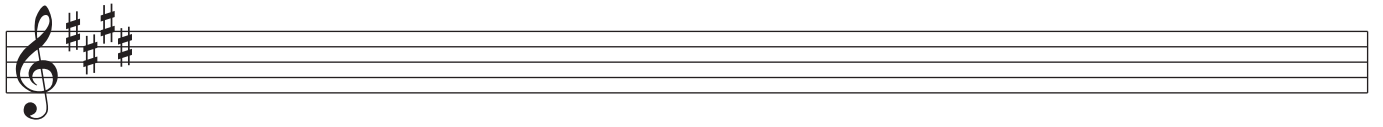
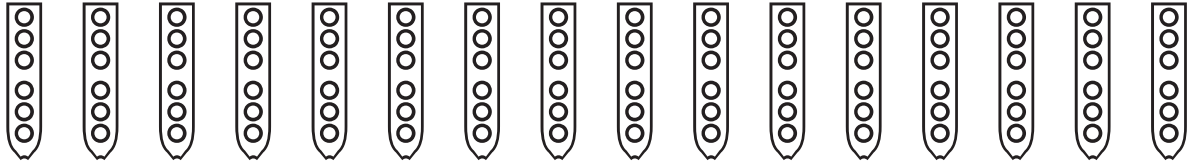
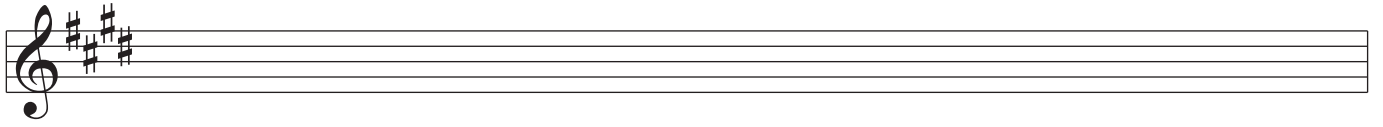
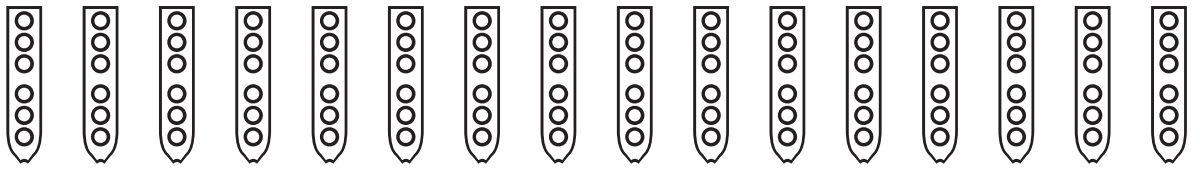
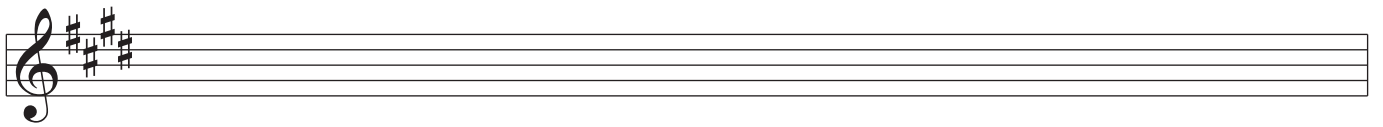
If you have any questions about this document or issues with its distribution, please visit <http://www.Flutopedia.com/>, which has information on how to contact us.

This document was last updated May 24, 2011 by Clint Goss [clint@goss.com]

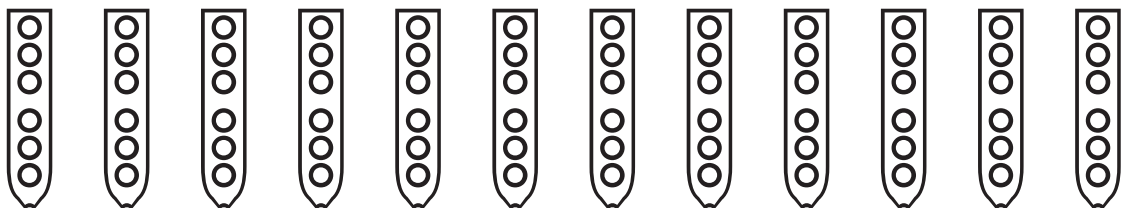
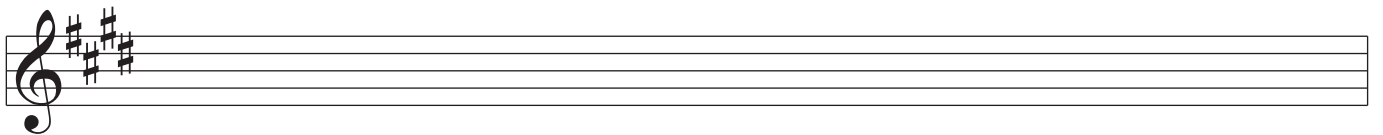
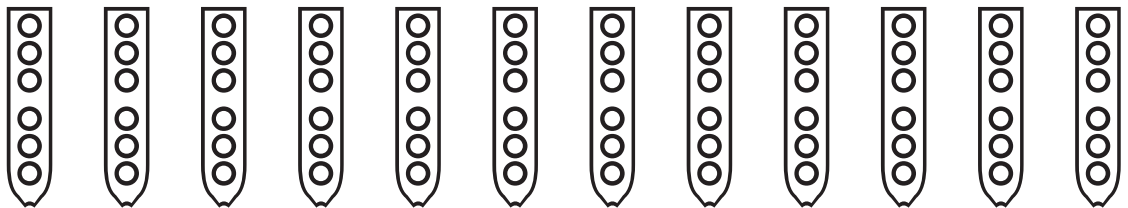
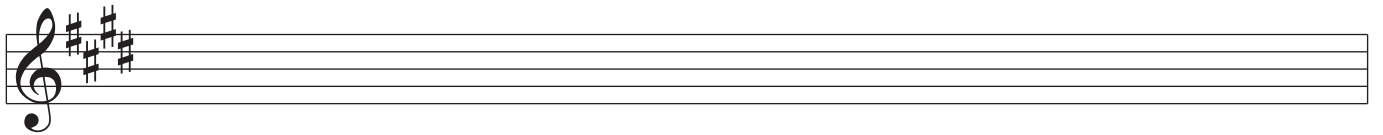
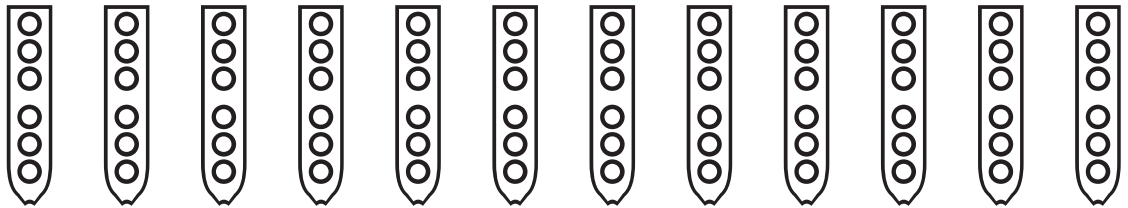
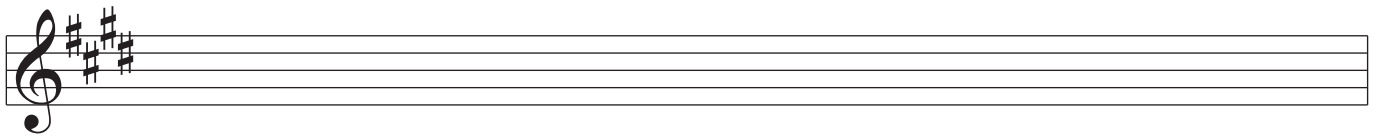
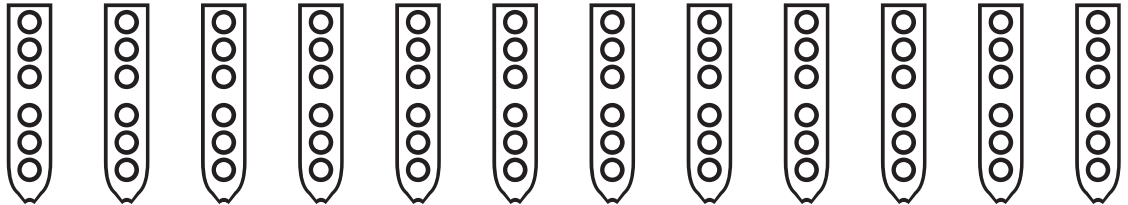


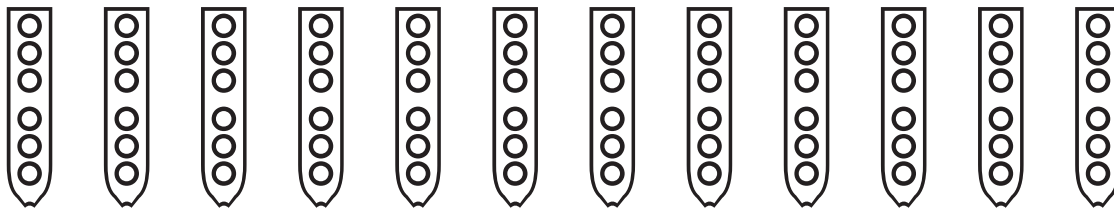
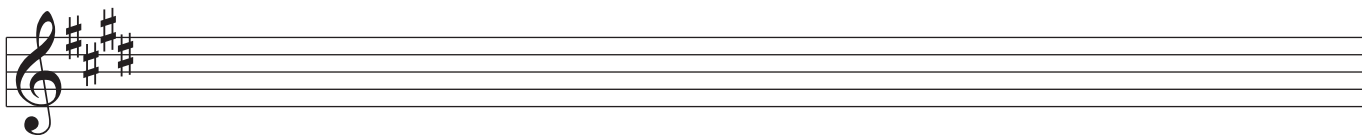
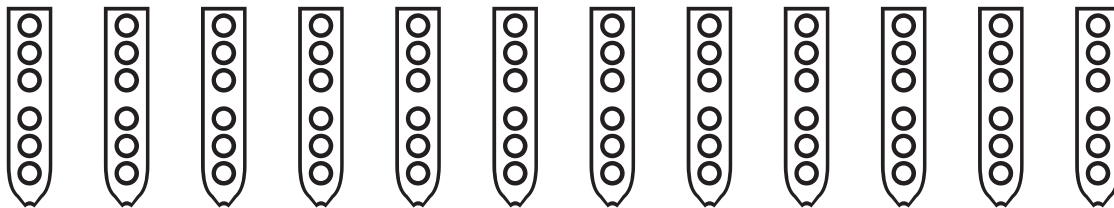
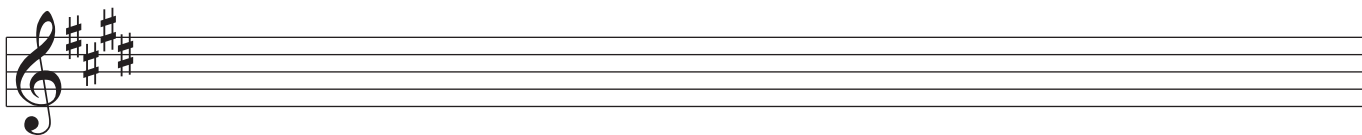
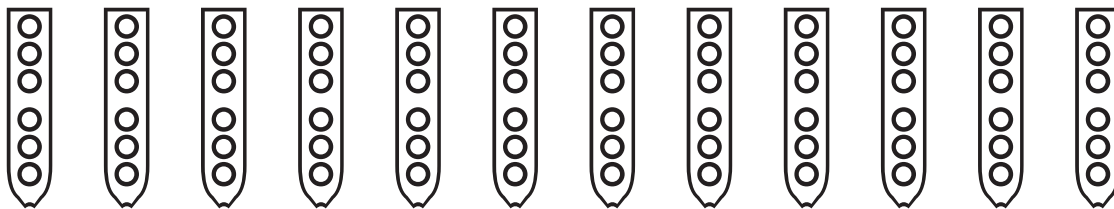
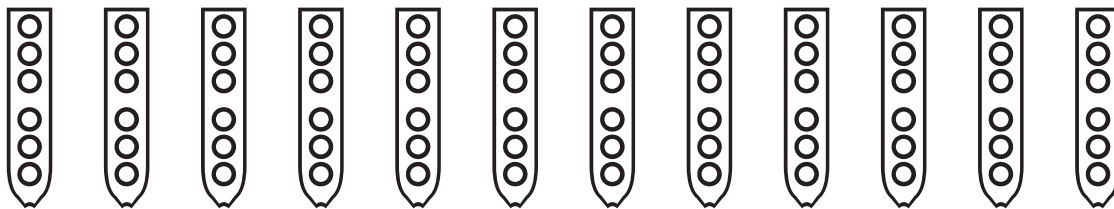
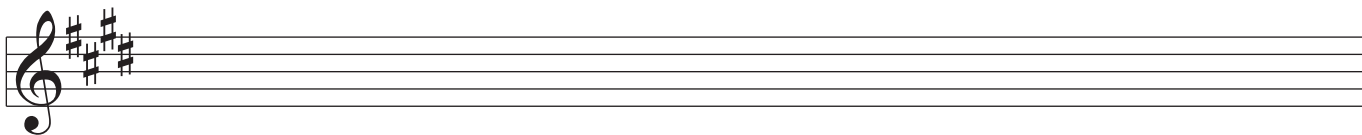
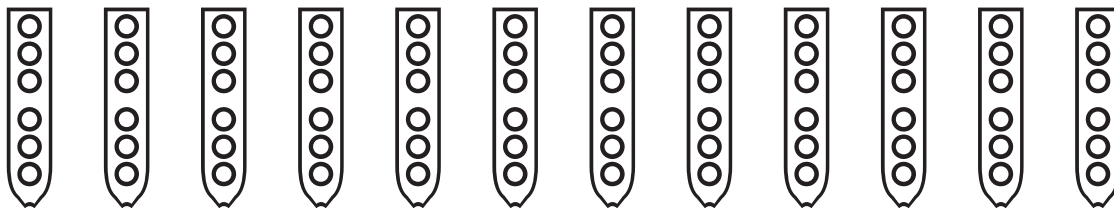
Nakai Tablature for Native American Flute



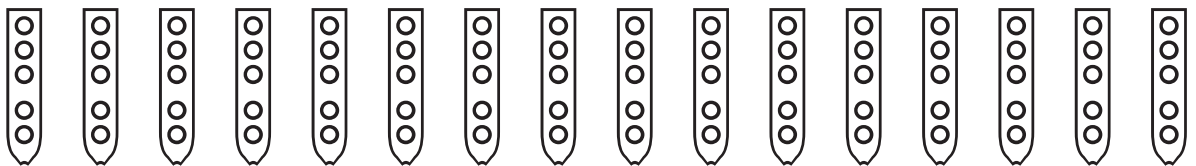
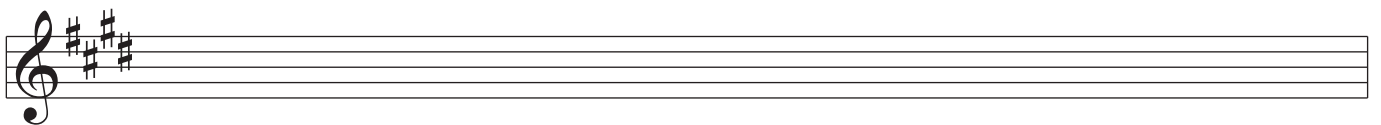
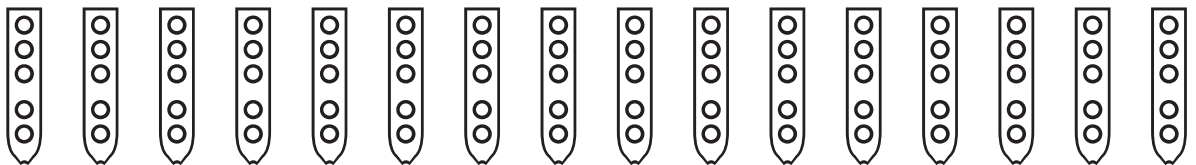
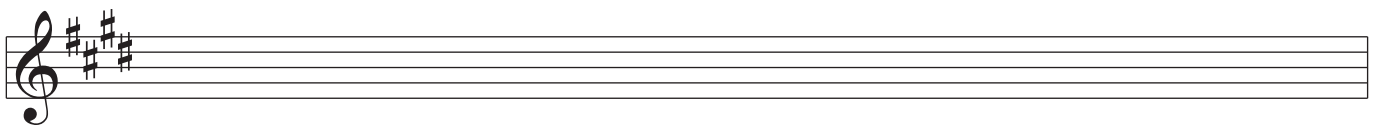
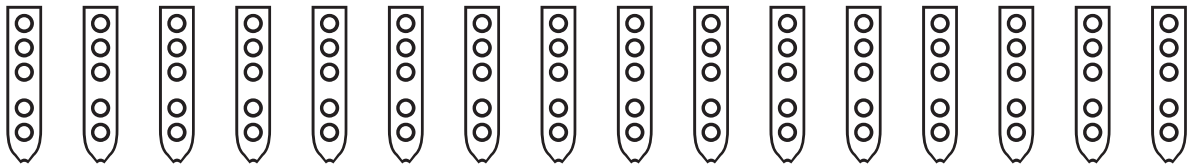
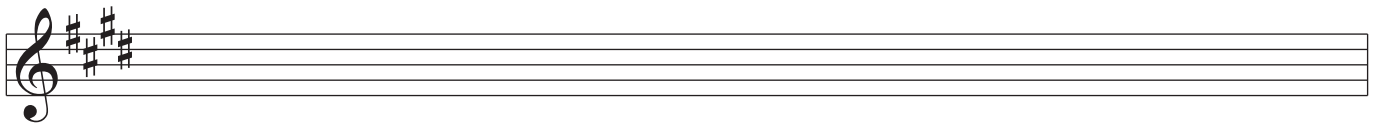
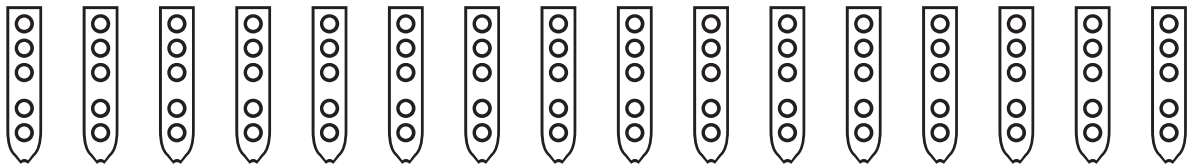
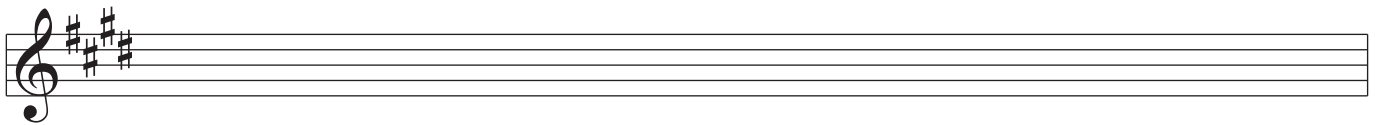
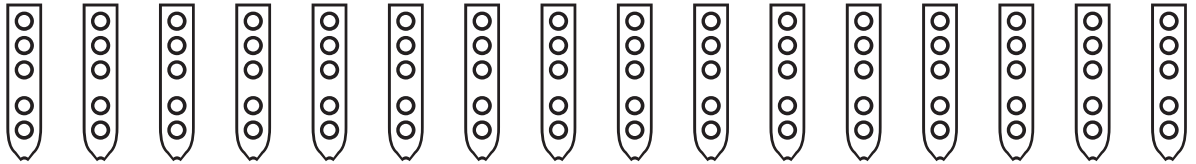
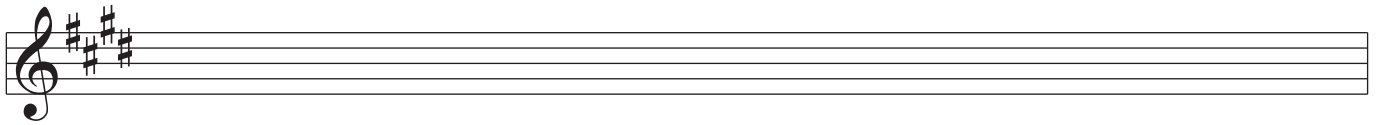


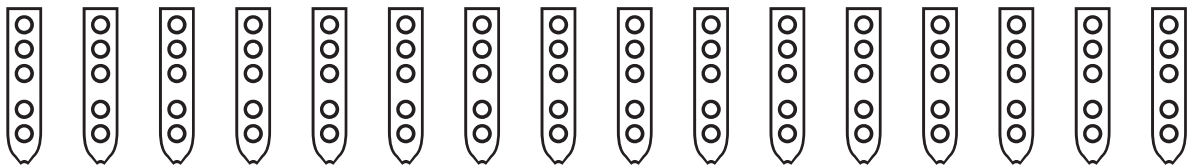
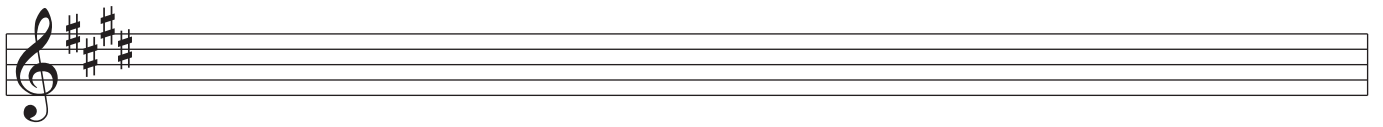
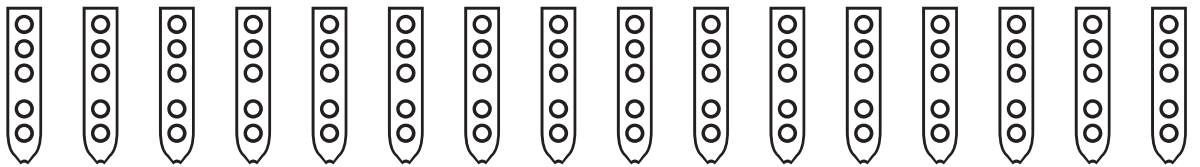
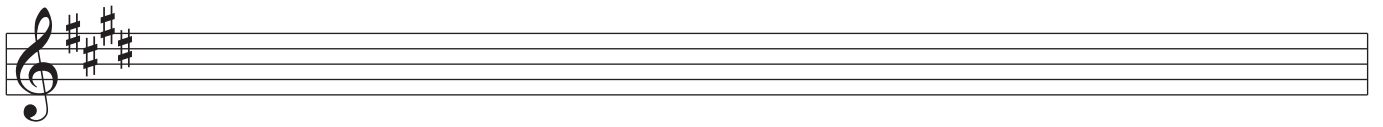
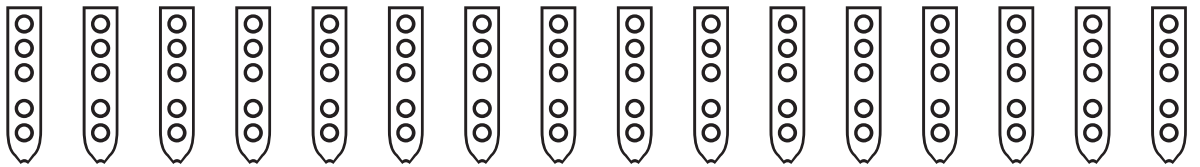
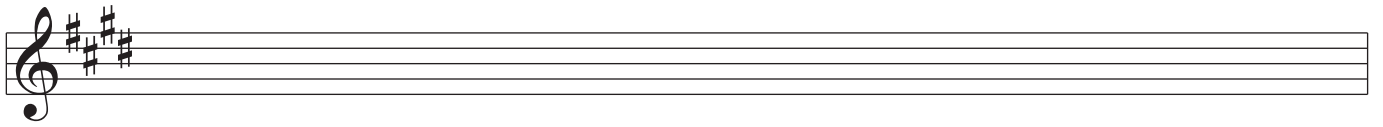
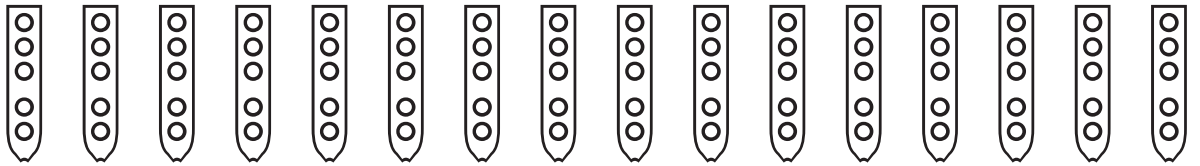
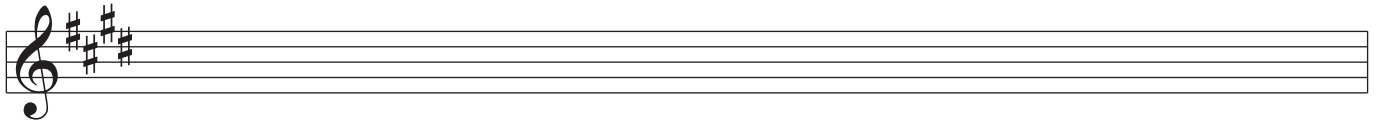
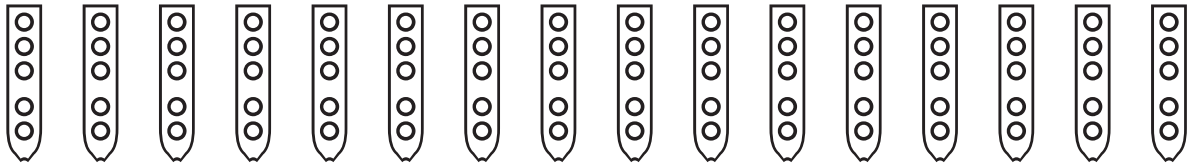
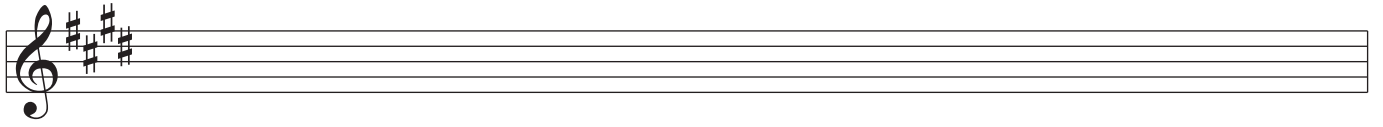
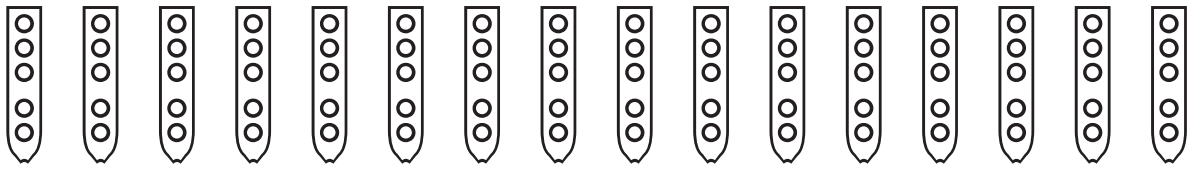
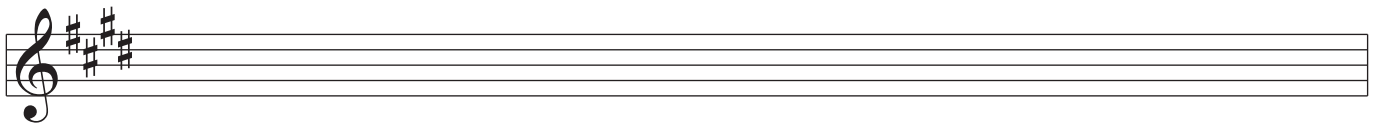
Nakai Tablature for Native American Flute



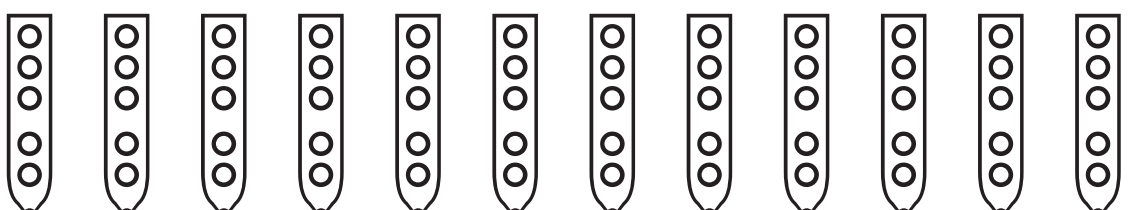
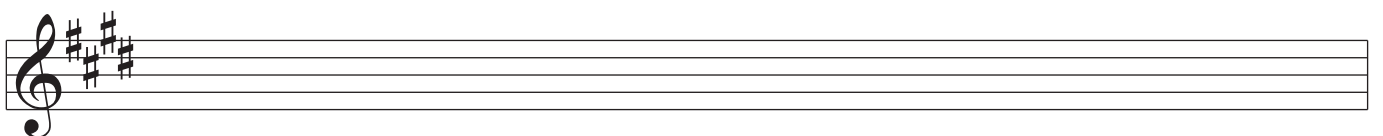
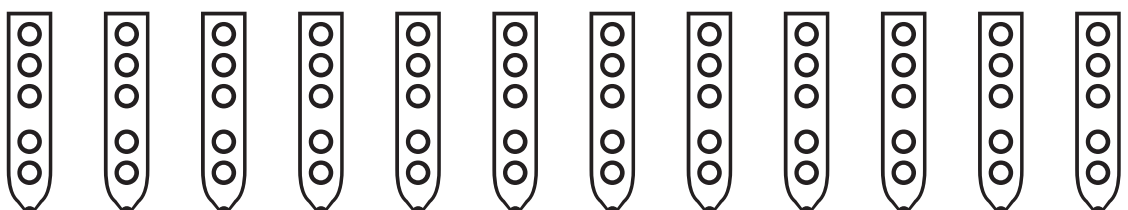
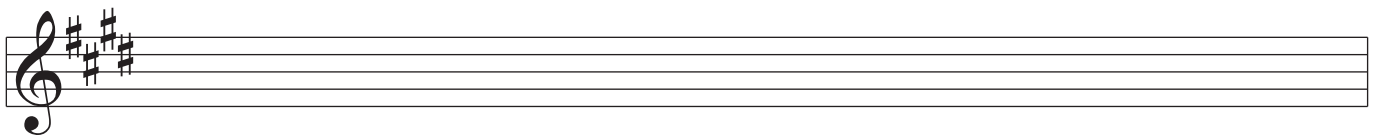
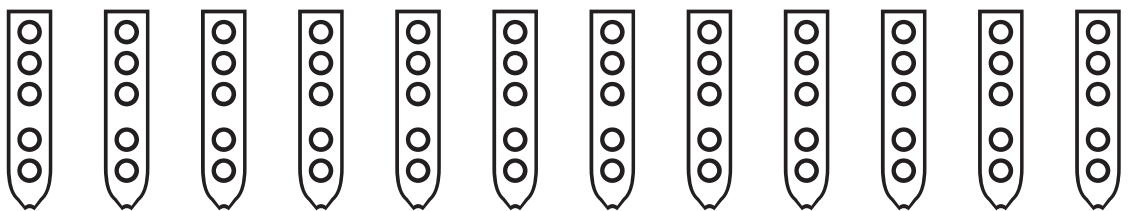
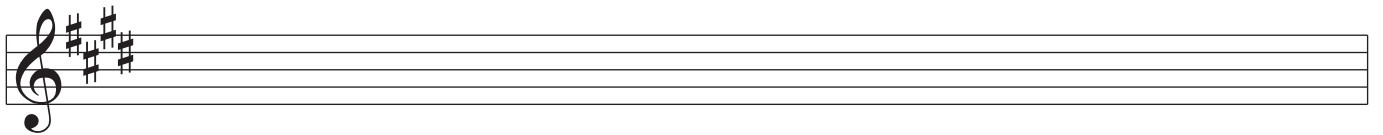
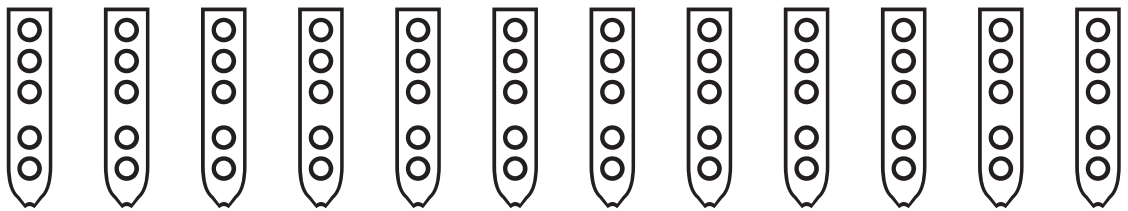
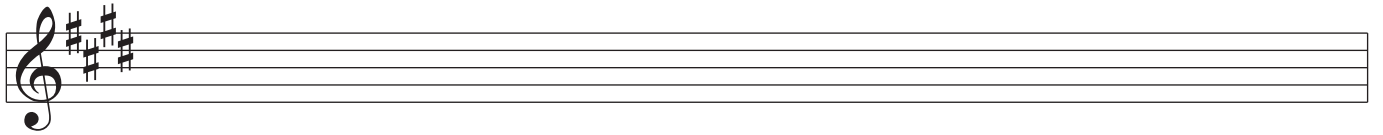
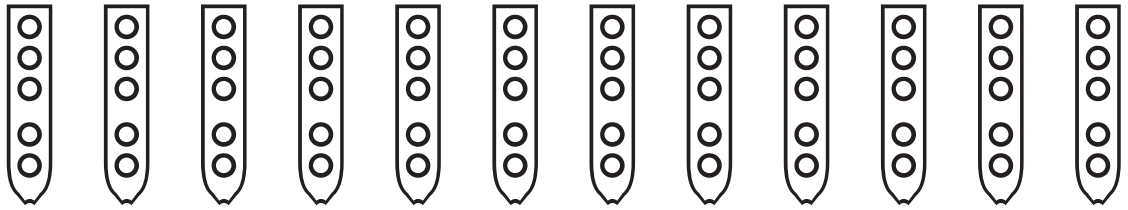
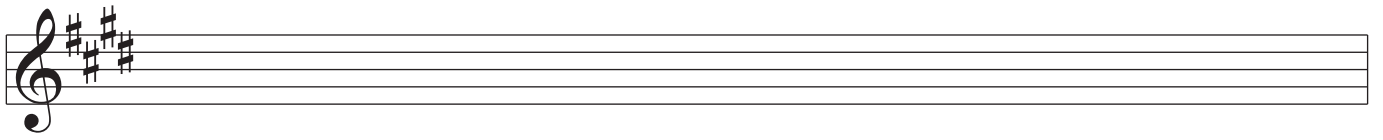


Nakai Tablature for Native American Flute

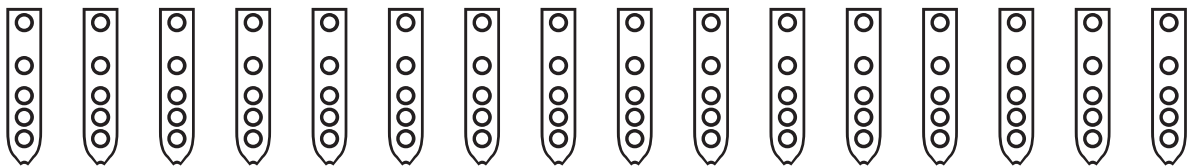
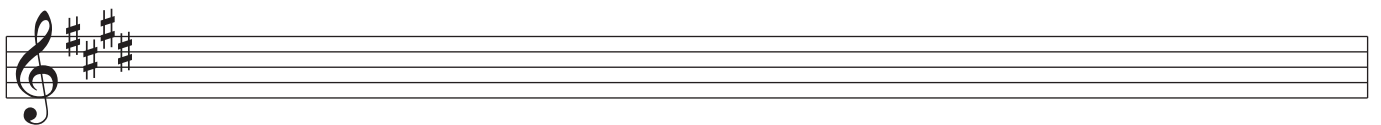
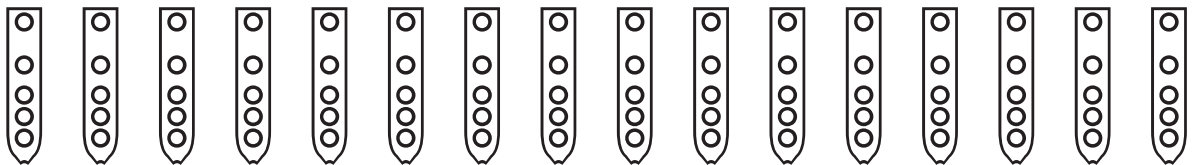
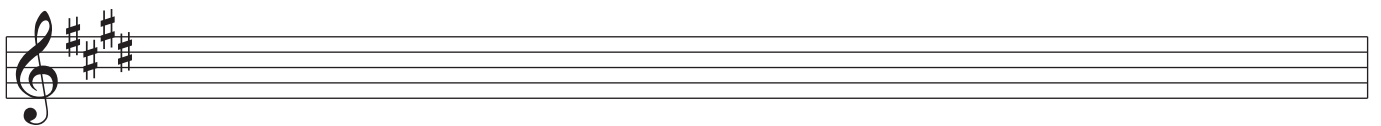
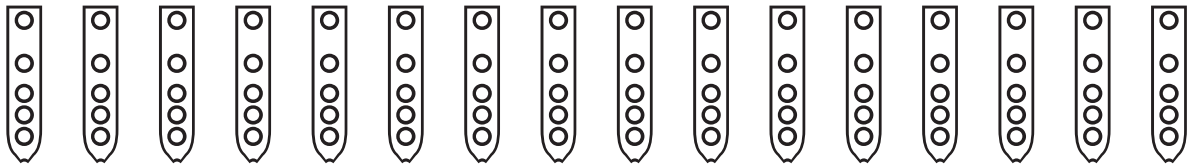
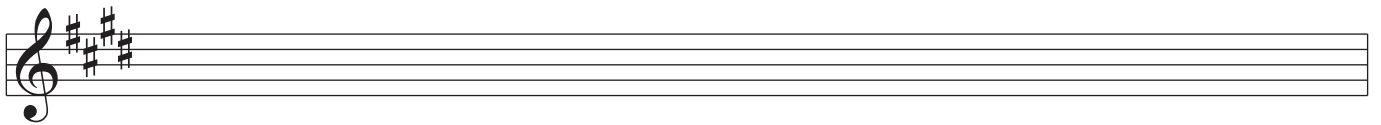
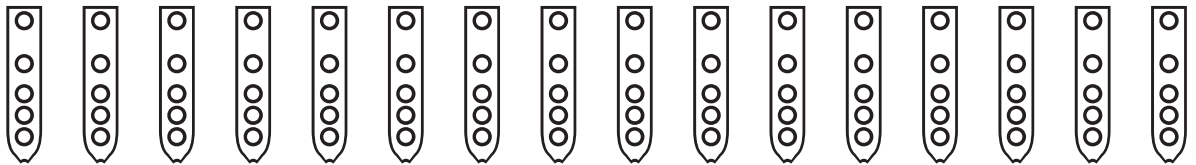
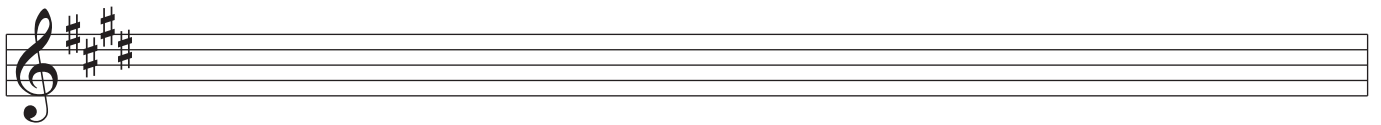
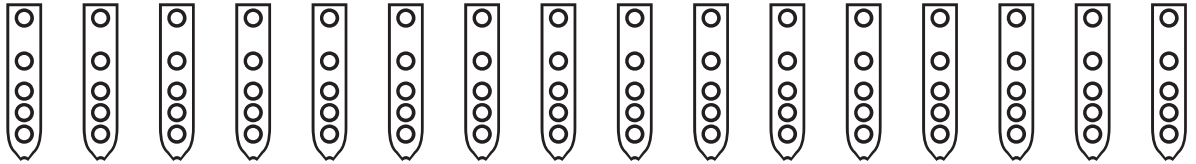
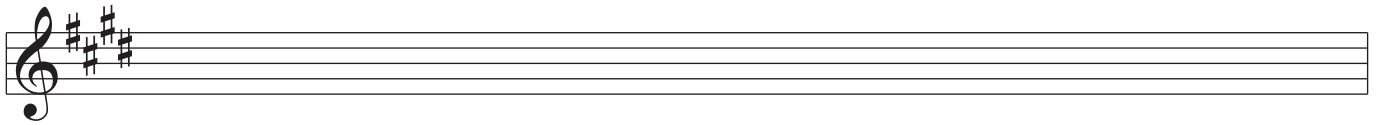


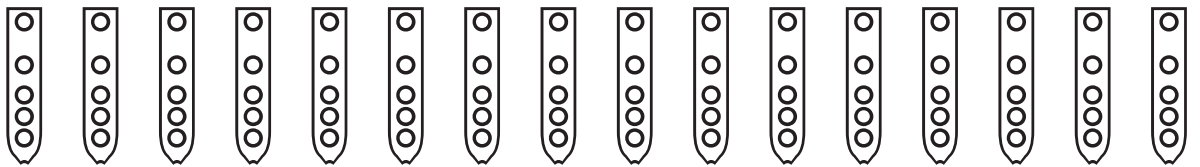
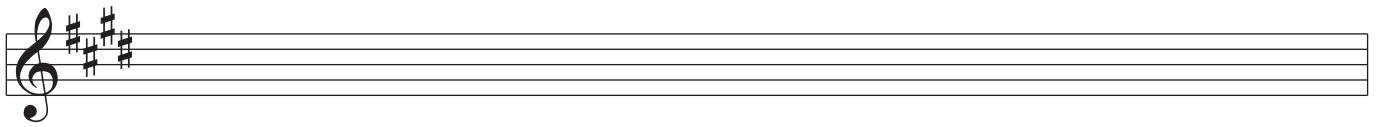
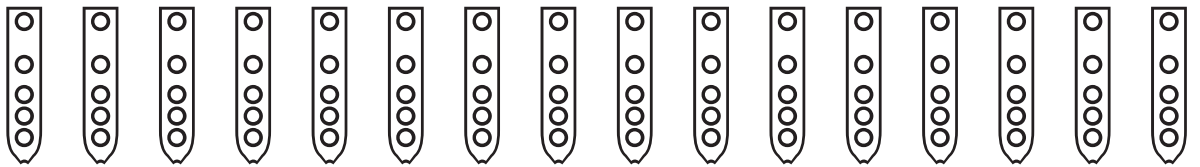
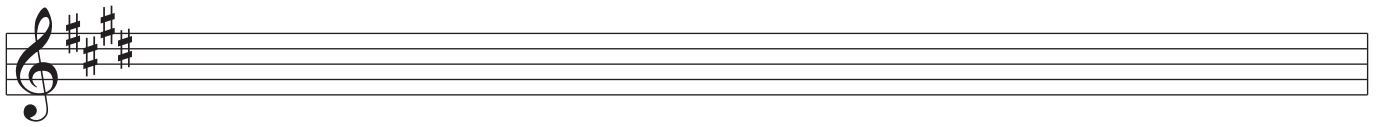
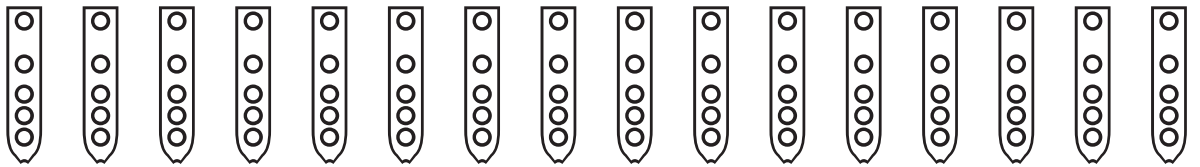
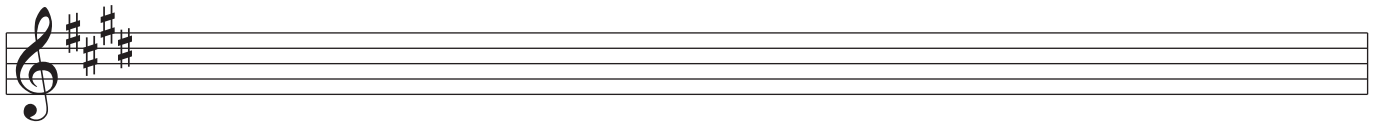
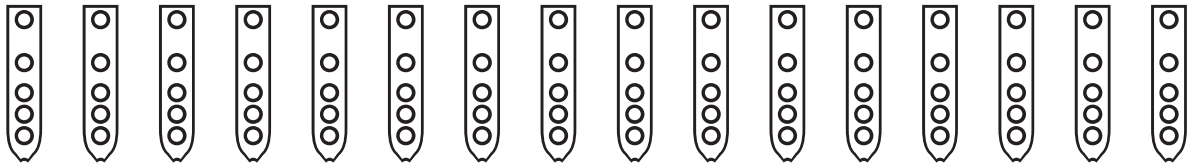
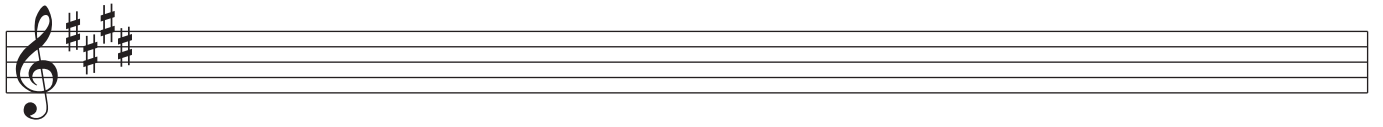
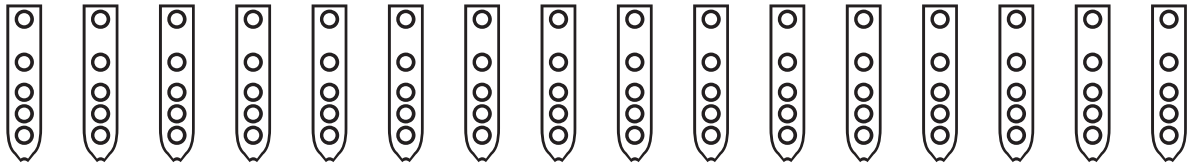
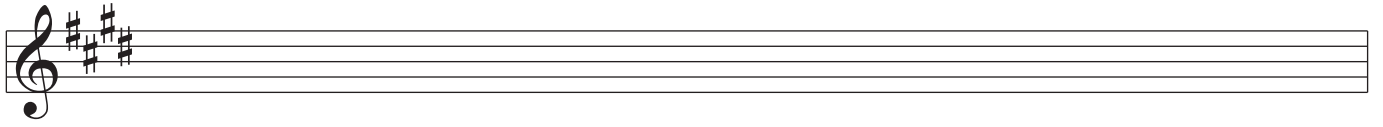
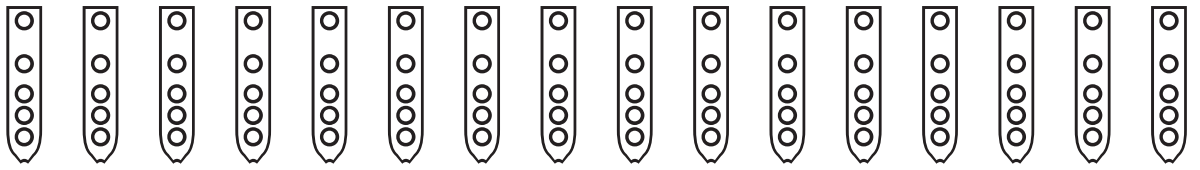
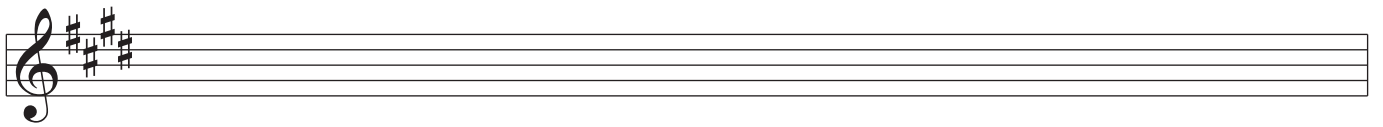


Nakai Tablature for Native American Flute

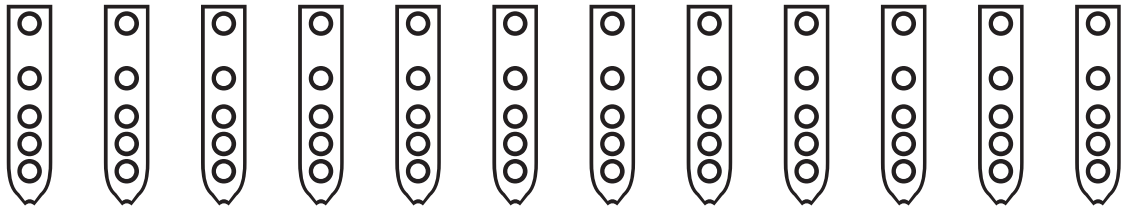
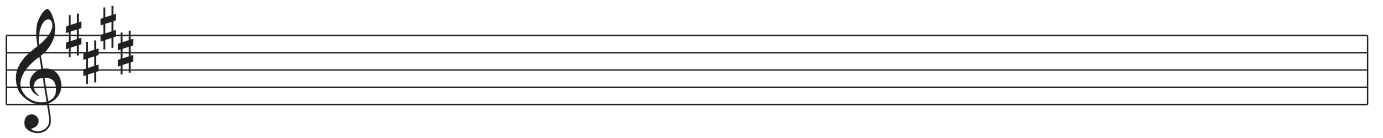
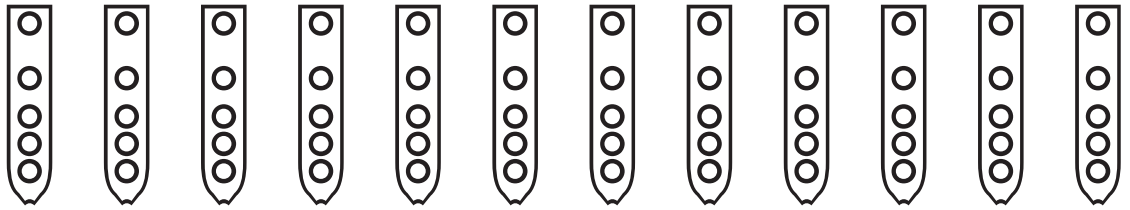
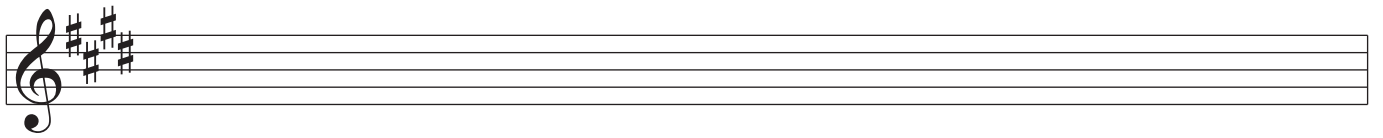
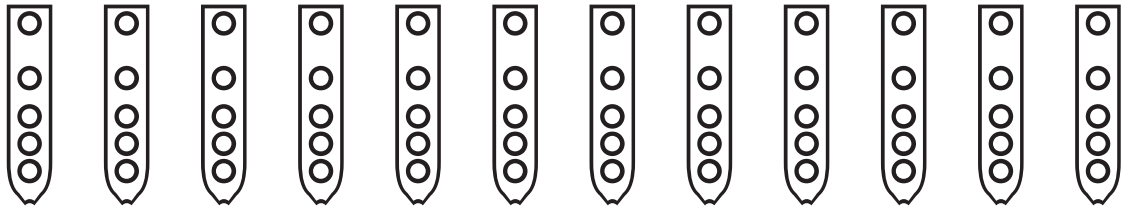
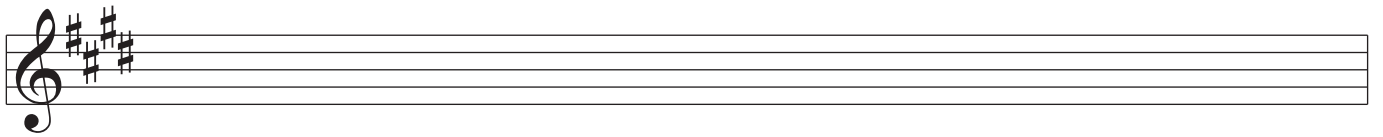
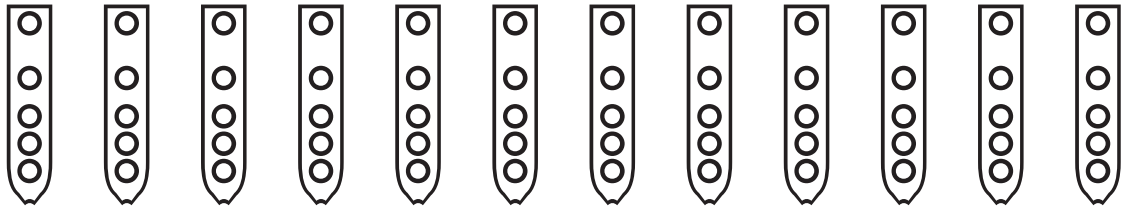
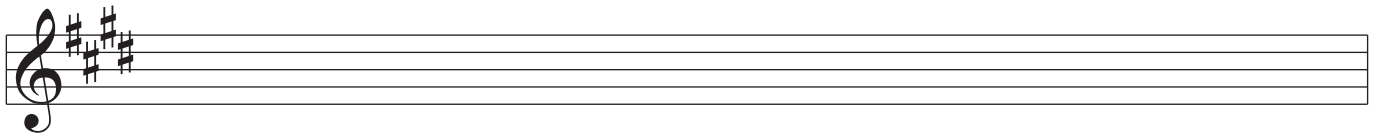
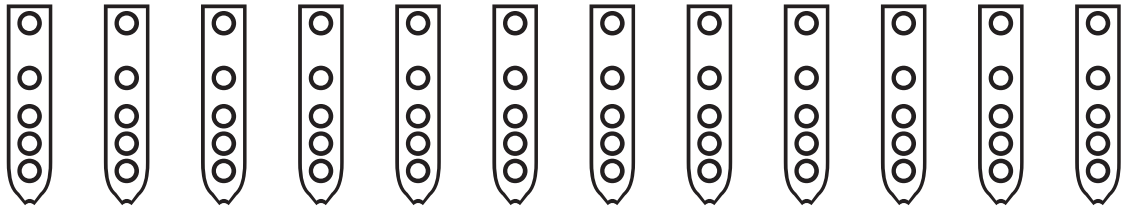
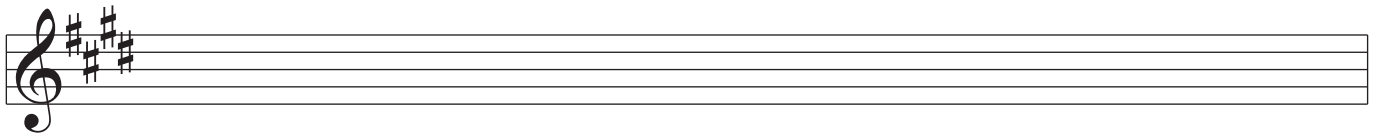


Nakai Tablature for Native American Flute

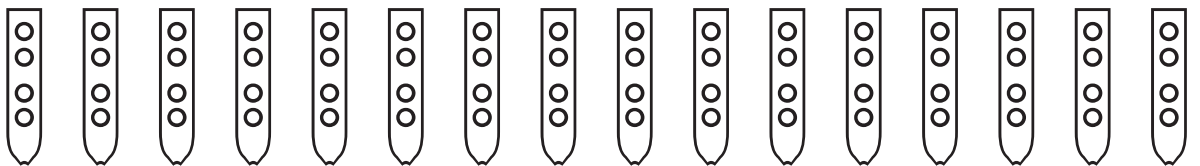
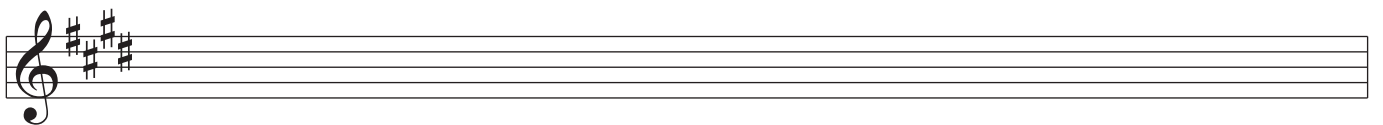
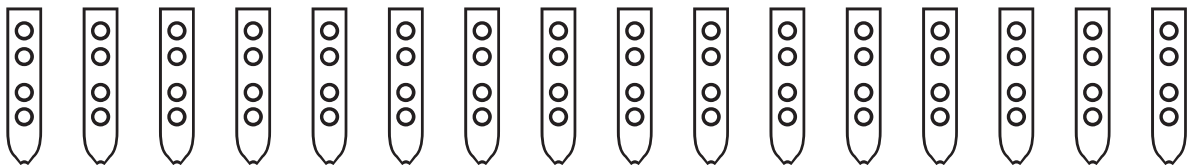
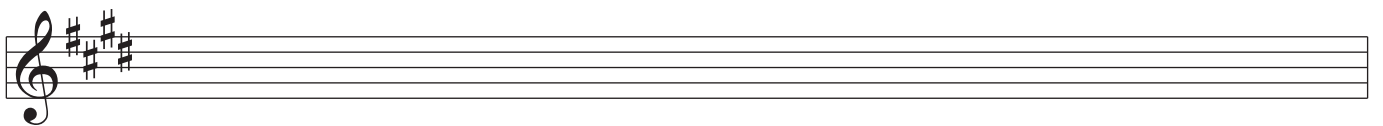
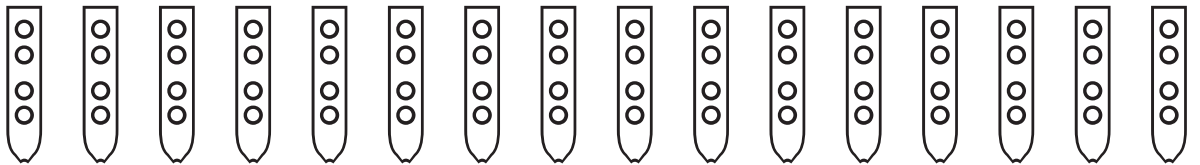
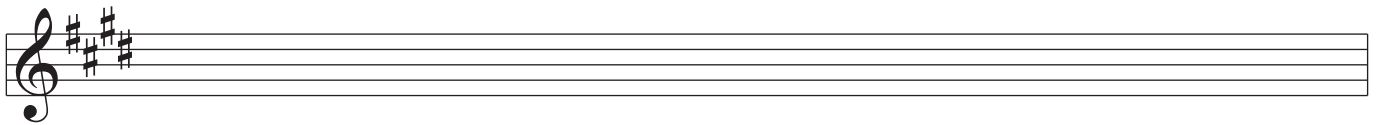
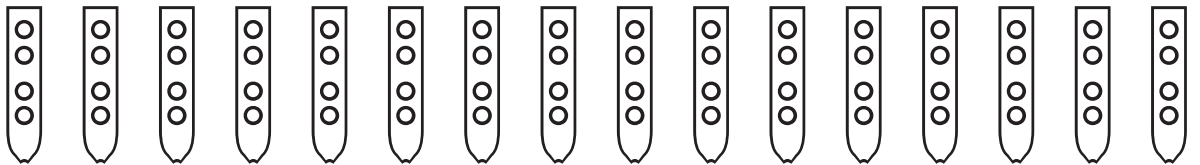
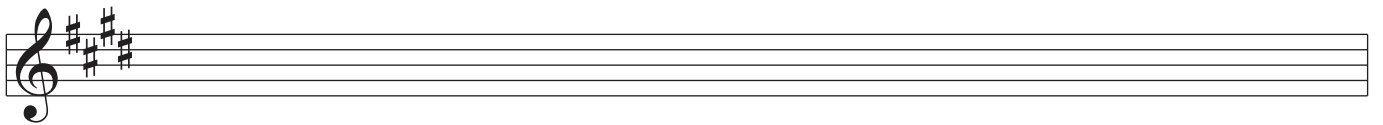
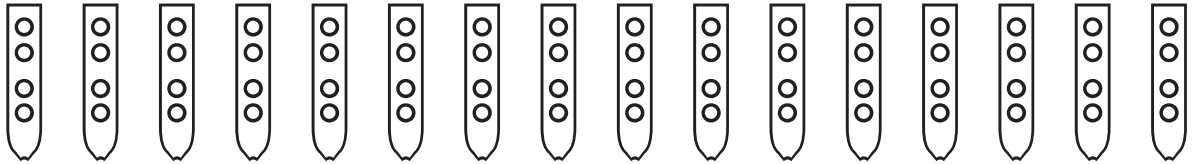


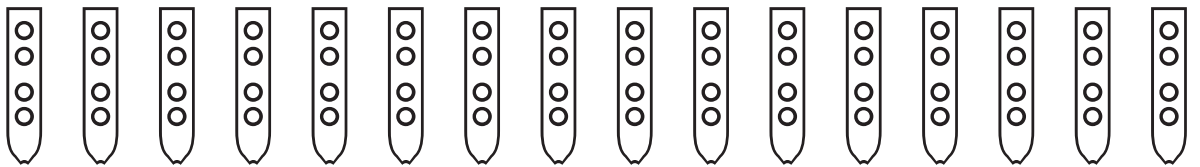
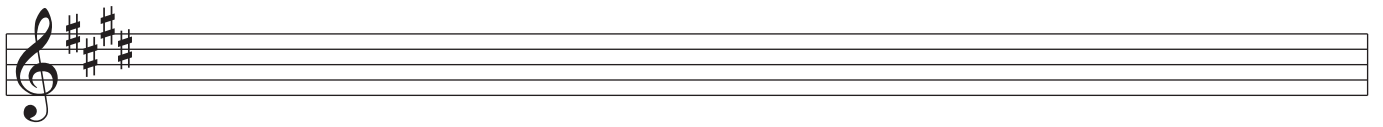
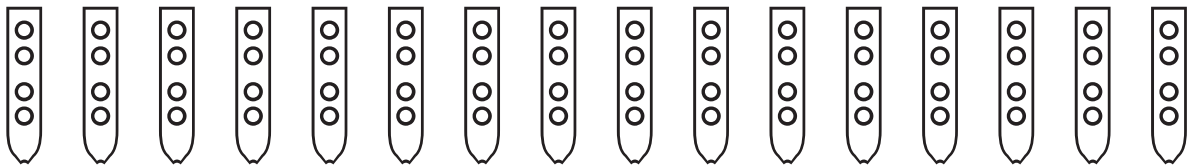
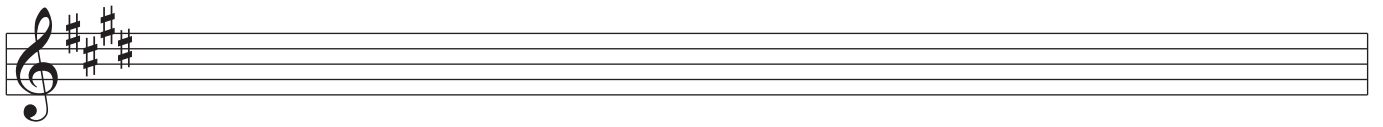
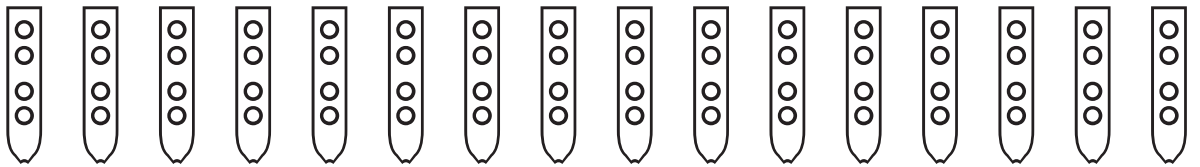
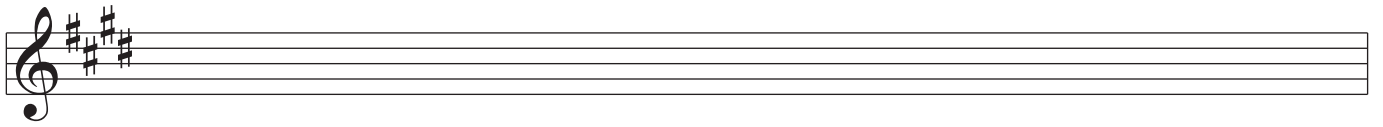
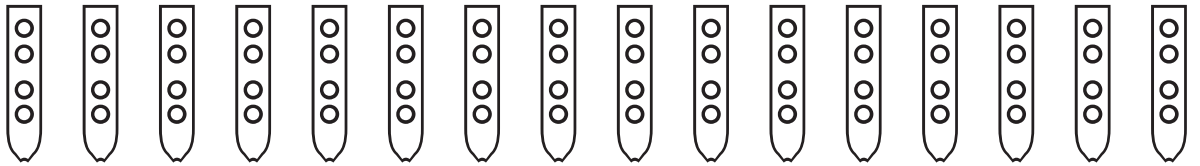
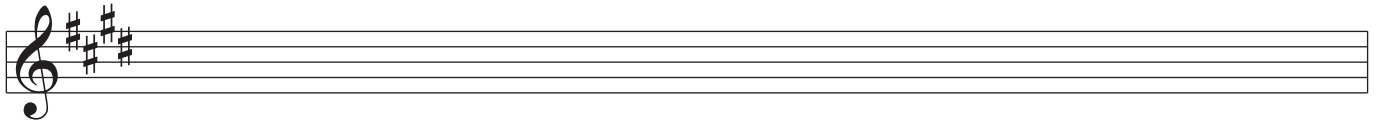
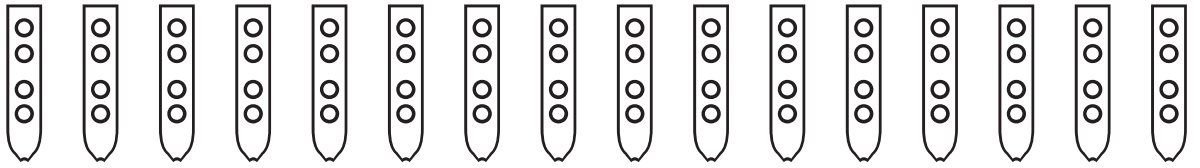
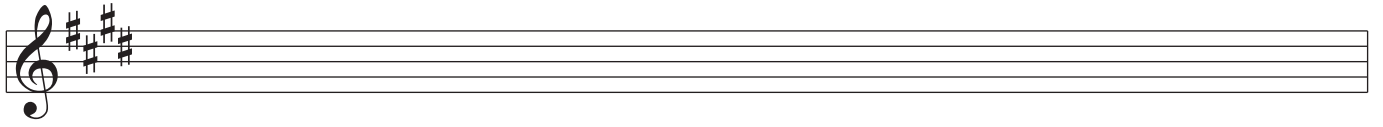
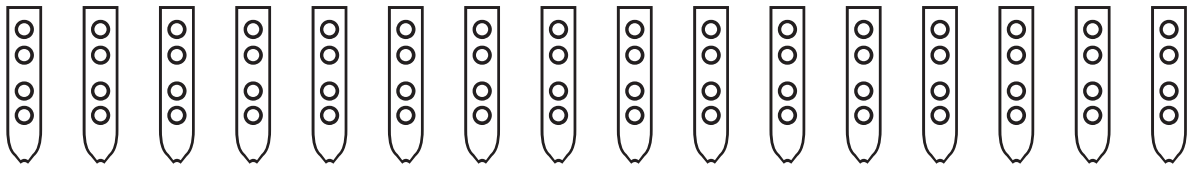
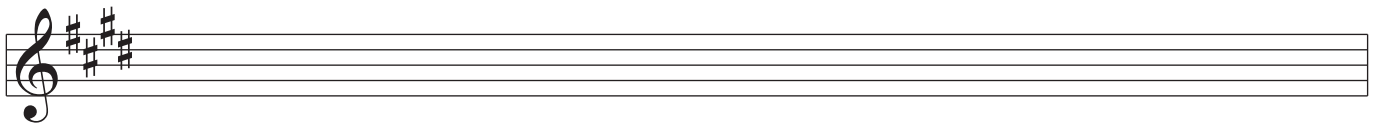


Nakai Tablature for Native American Flute



Nakai Tablature for Native American Flute





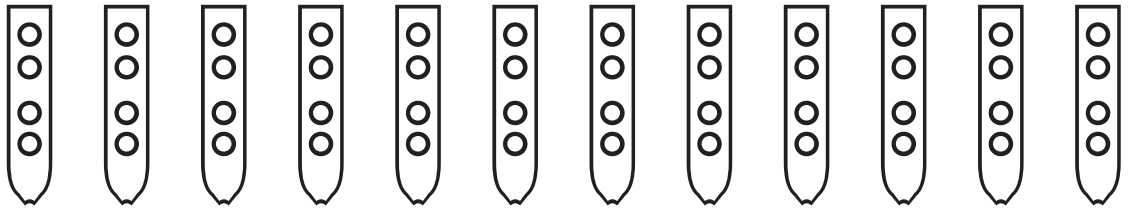
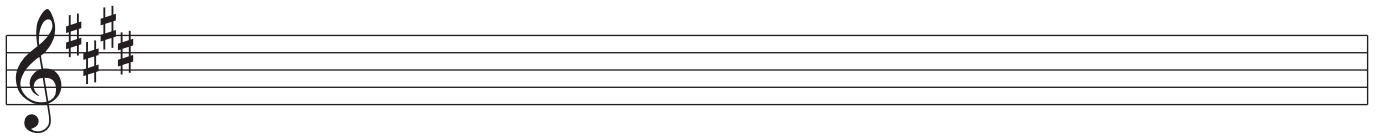
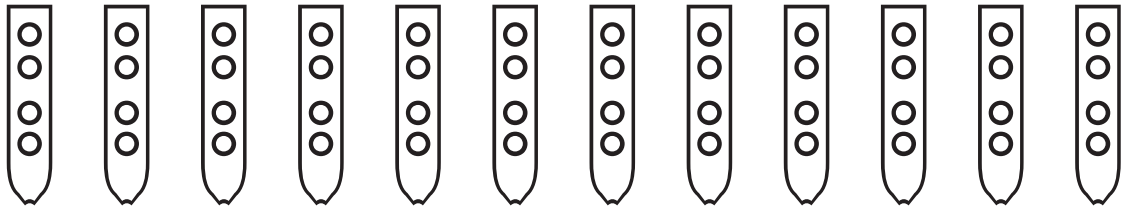
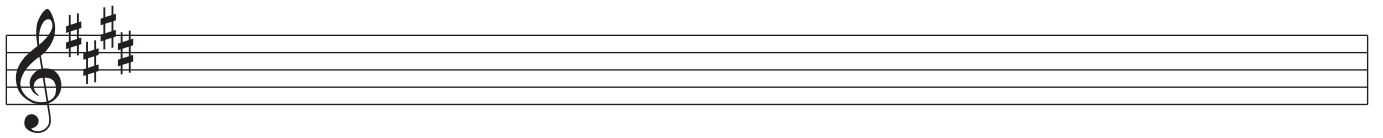
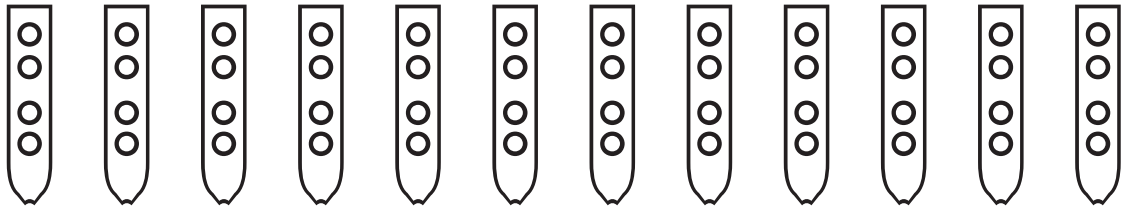
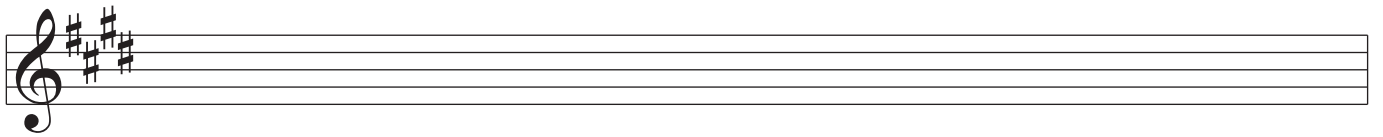
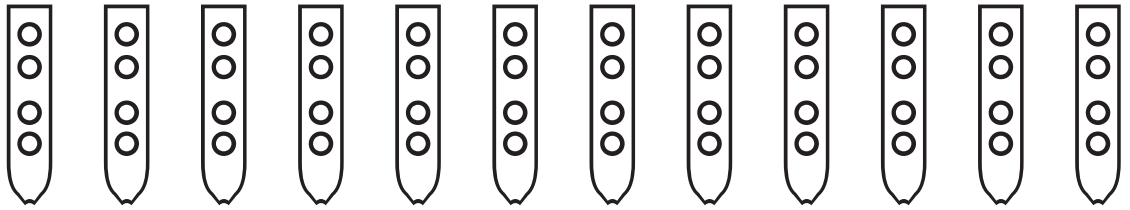
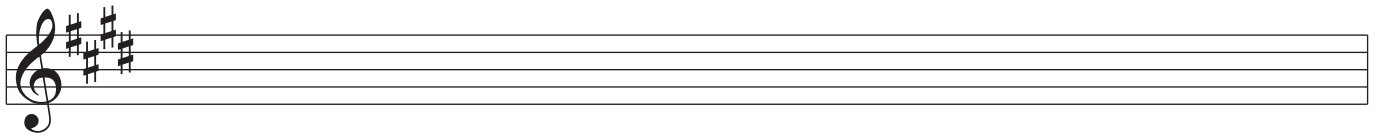
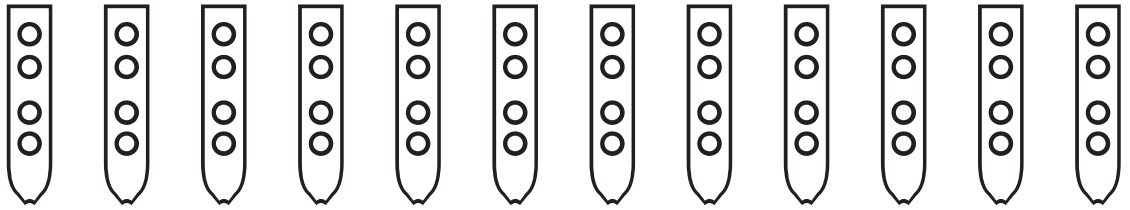
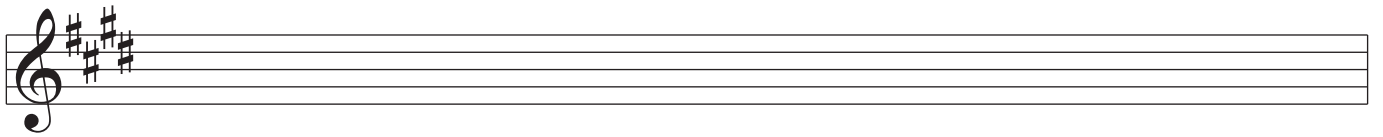
Nakai Tablature for Native American Flute

A musical staff with a treble clef and a key signature of three sharps (F#, C#, G#). Below the staff are 12 vertical flute diagrams, each with six finger holes arranged in two columns of three.

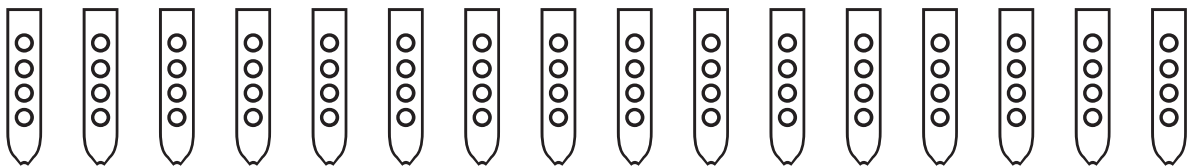
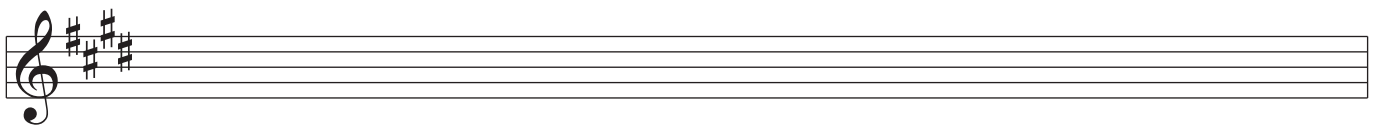
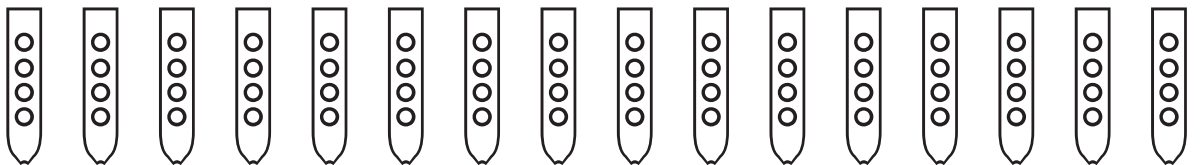
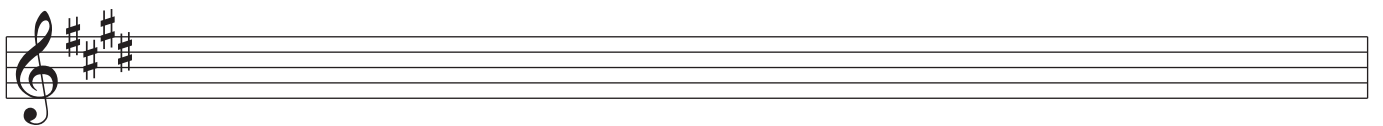
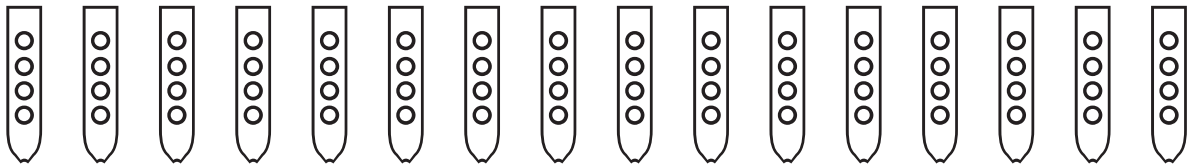
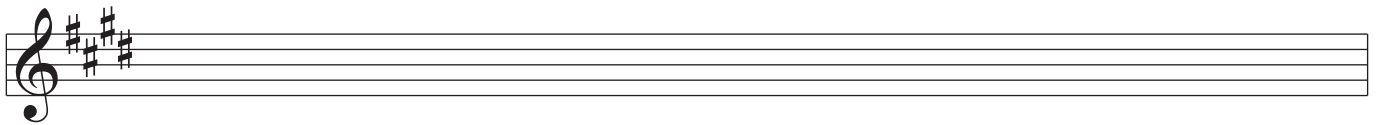
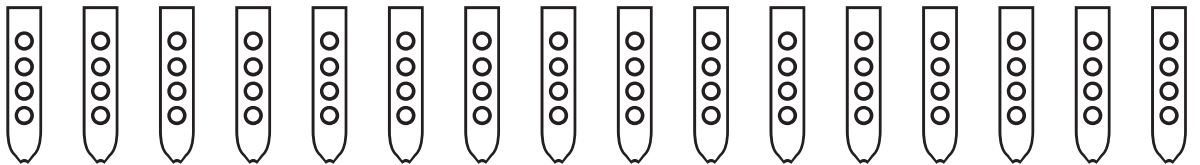
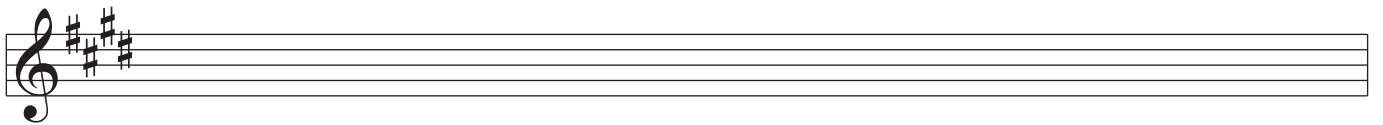
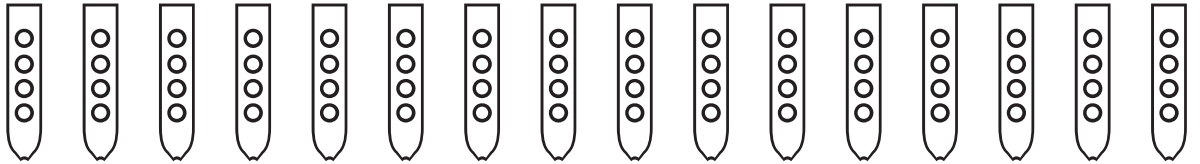
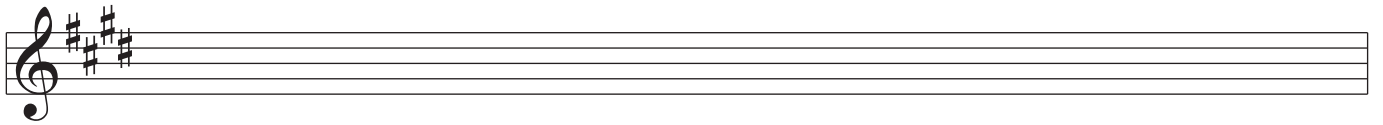
A musical staff with a treble clef and a key signature of three sharps (F#, C#, G#). Below the staff are 12 vertical flute diagrams, each with six finger holes arranged in two columns of three.

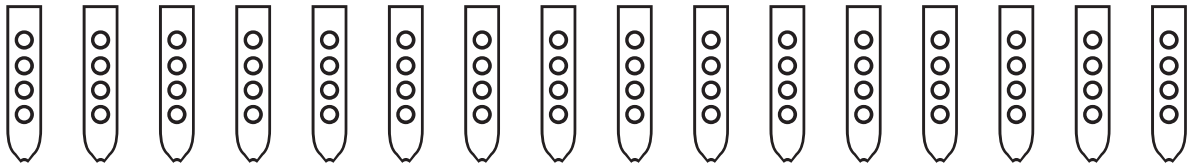
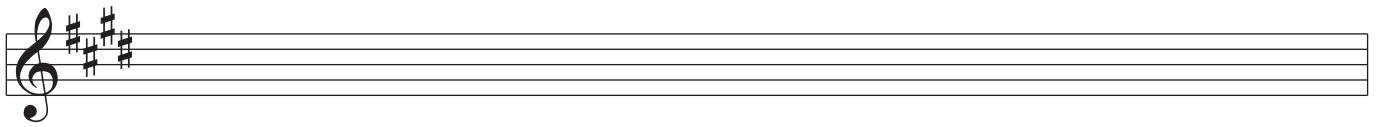
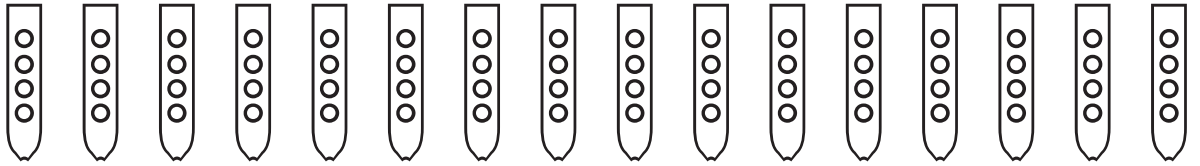
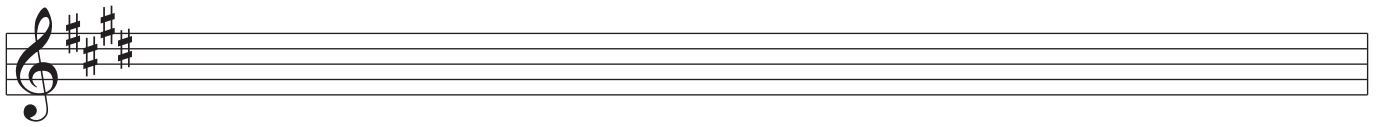
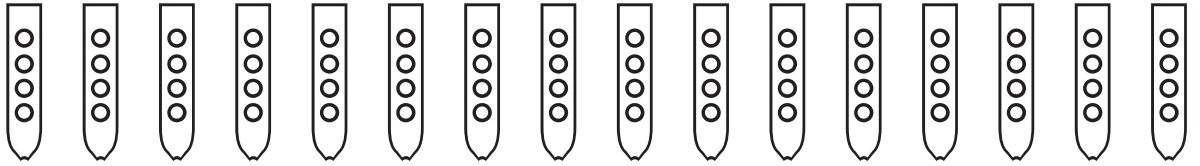
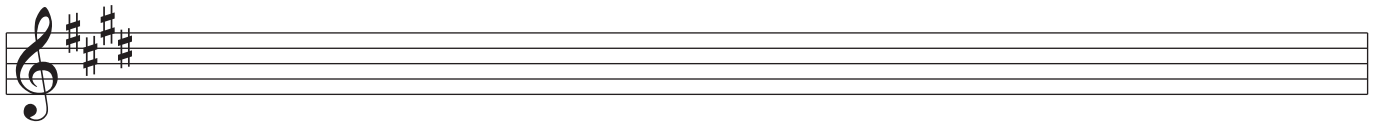
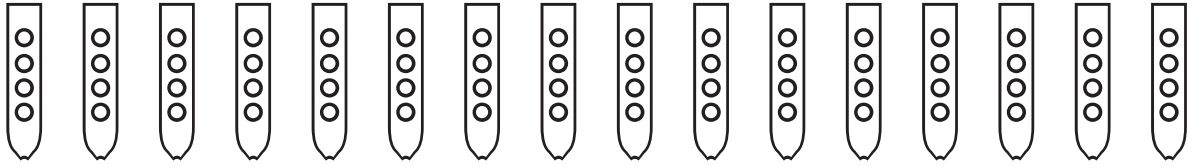
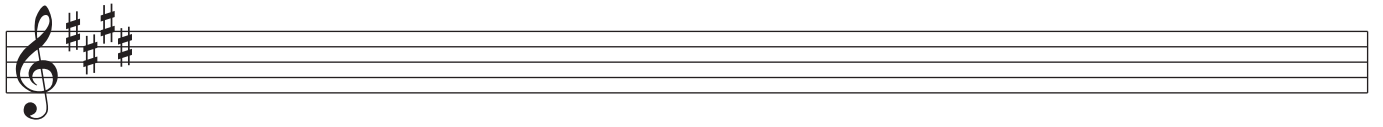
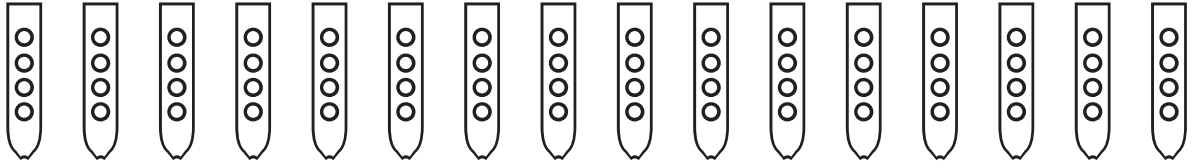
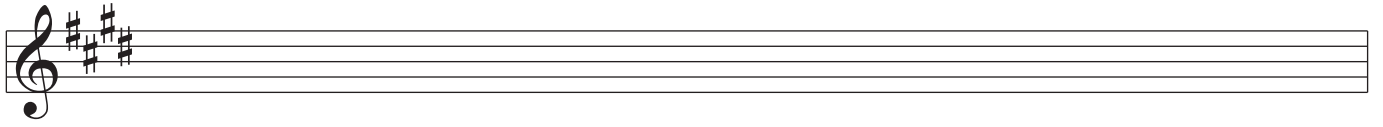
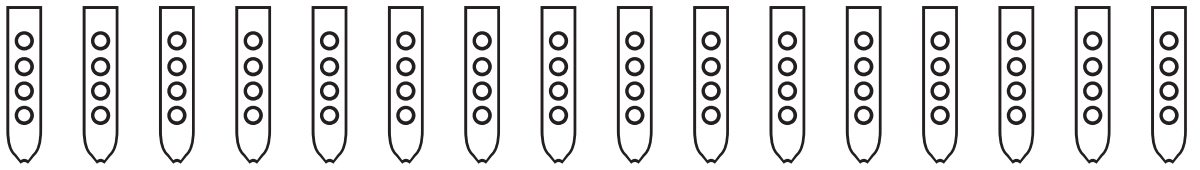
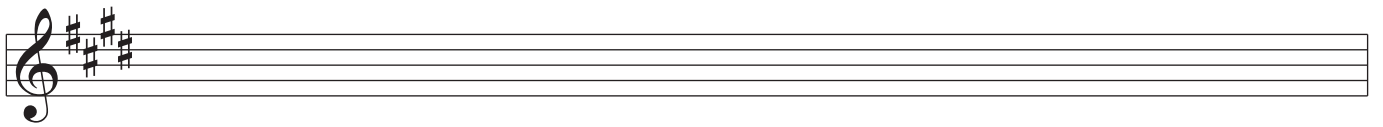
A musical staff with a treble clef and a key signature of three sharps (F#, C#, G#). Below the staff are 12 vertical flute diagrams, each with six finger holes arranged in two columns of three.

A musical staff with a treble clef and a key signature of three sharps (F#, C#, G#). Below the staff are 12 vertical flute diagrams, each with six finger holes arranged in two columns of three.

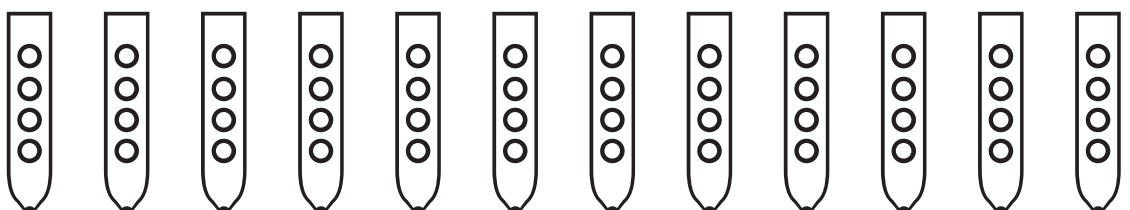
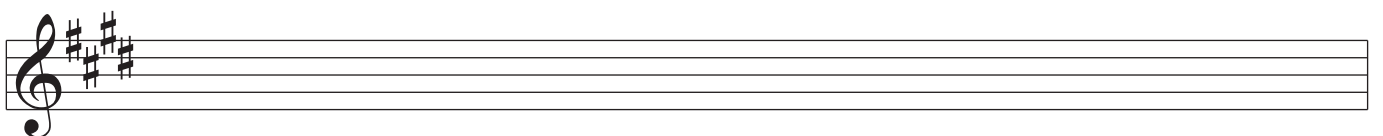
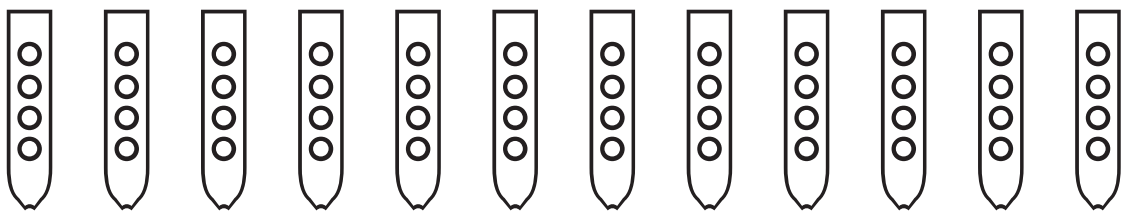
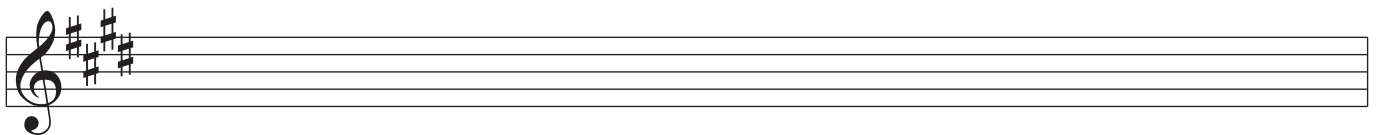
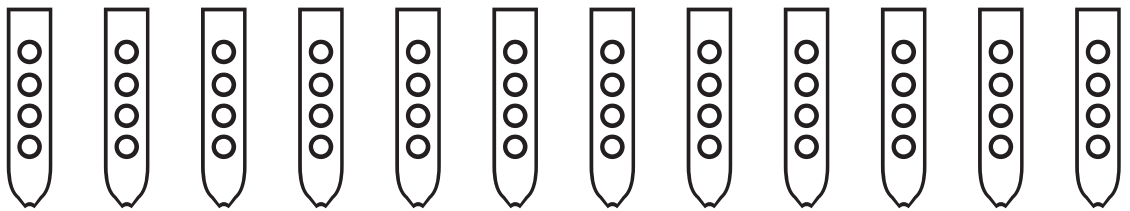
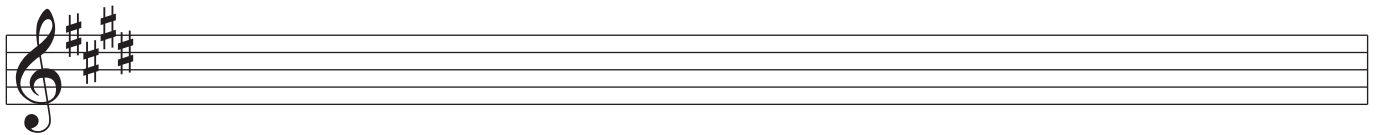
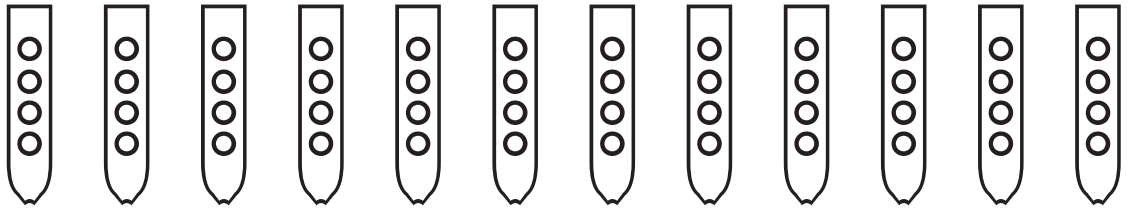
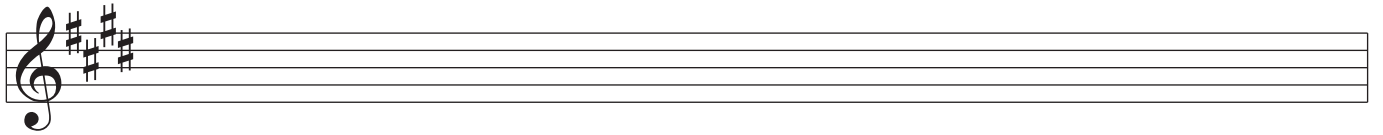
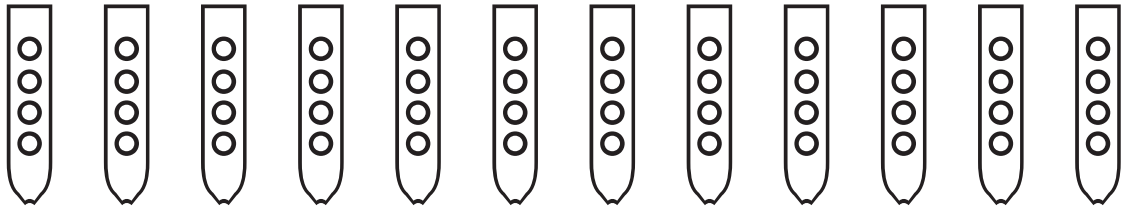
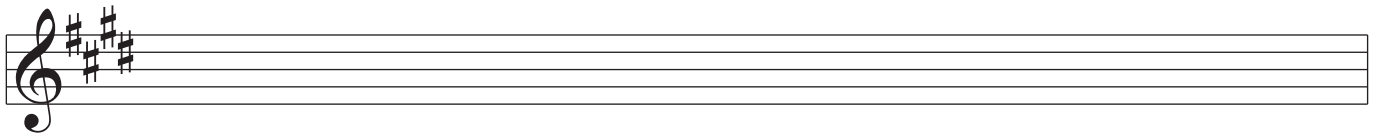


Nakai Tablature for Native American Flute

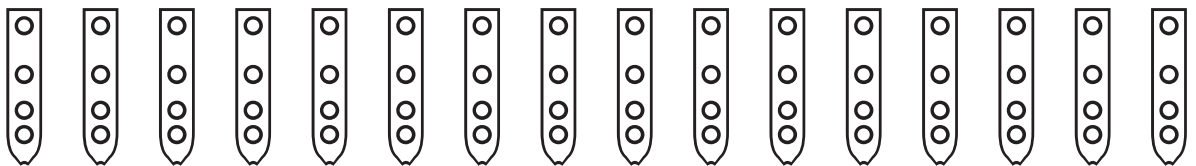
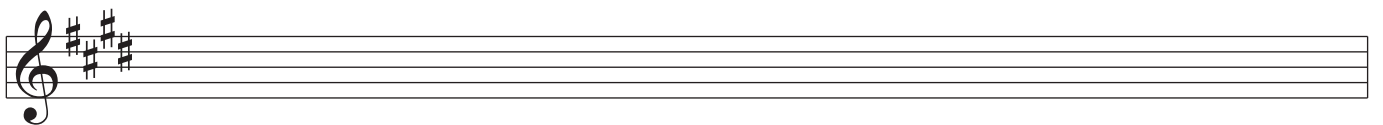
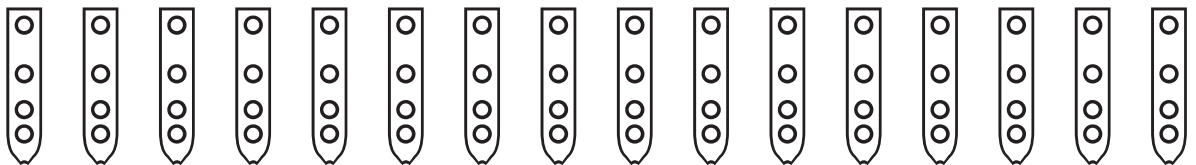
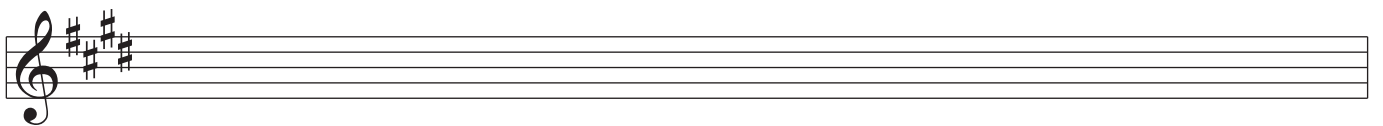
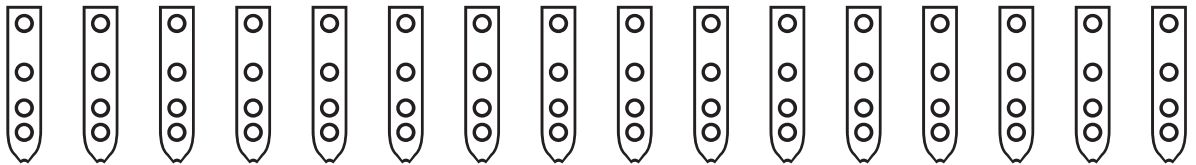
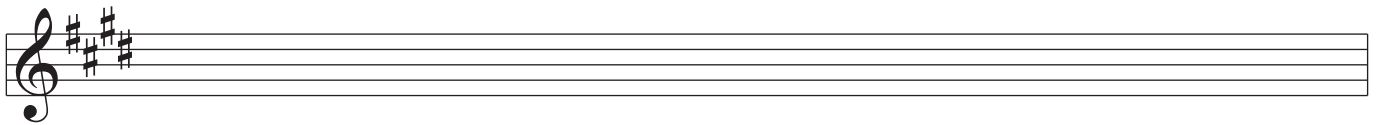
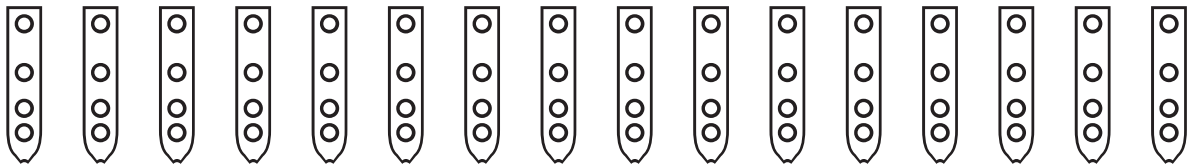
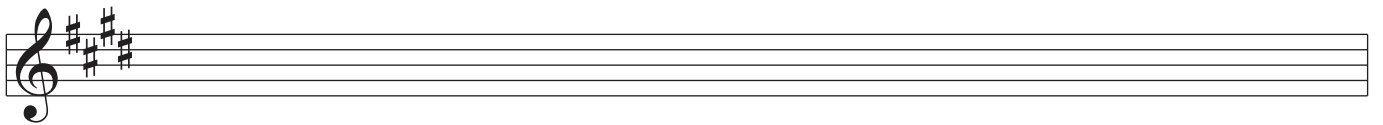
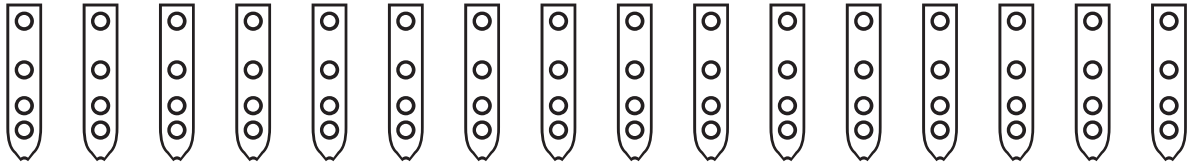


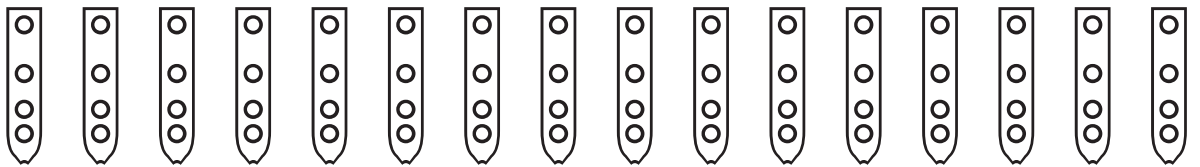
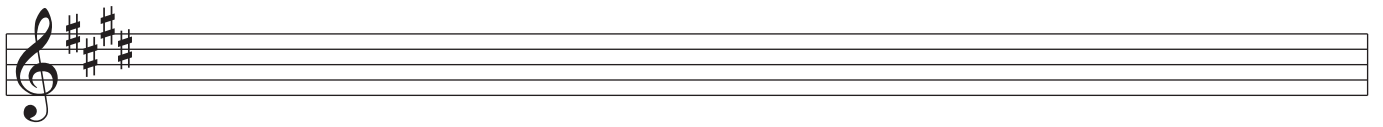
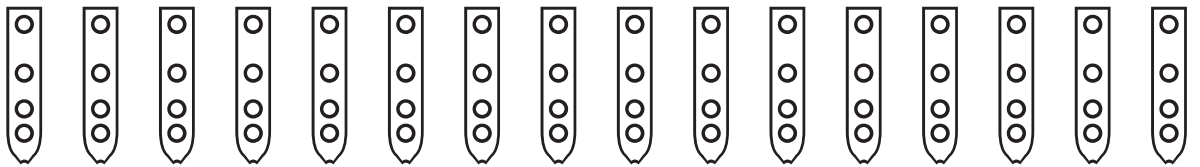
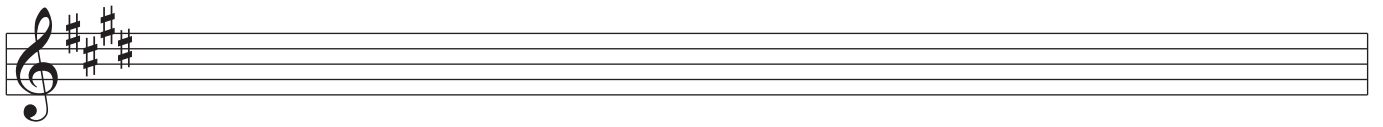
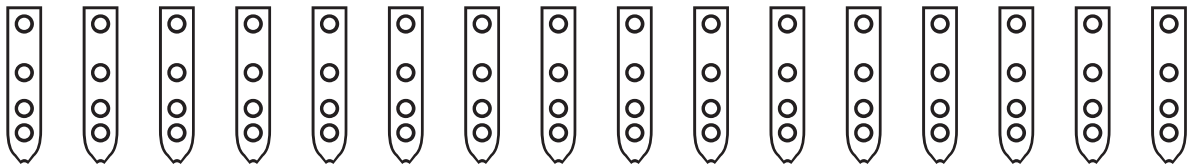
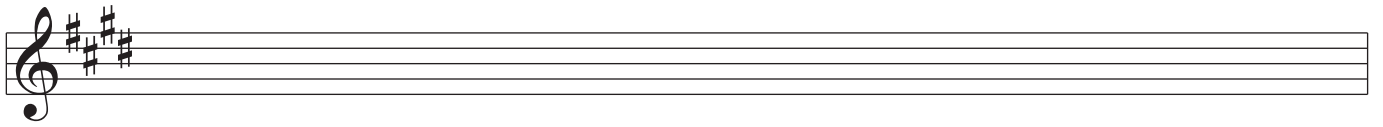
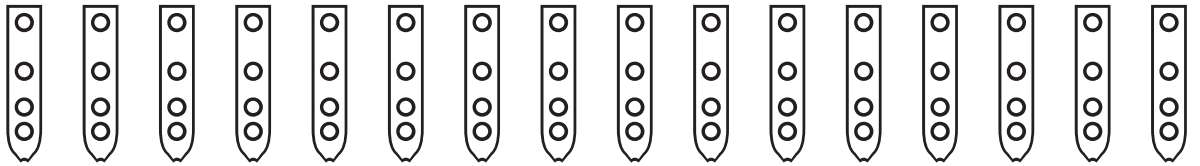
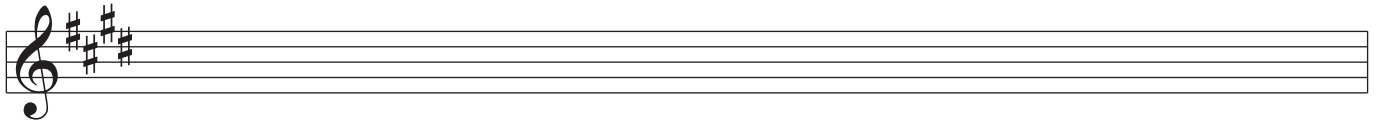
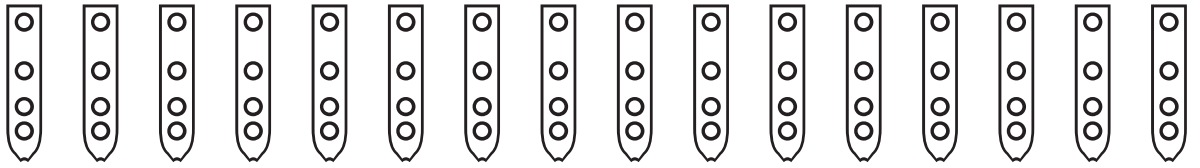
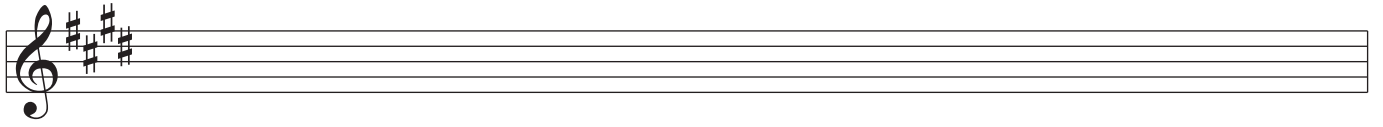
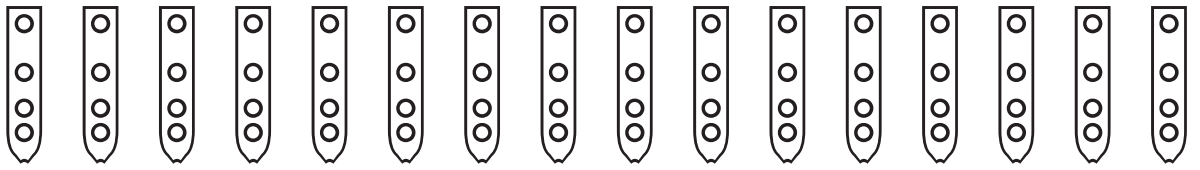
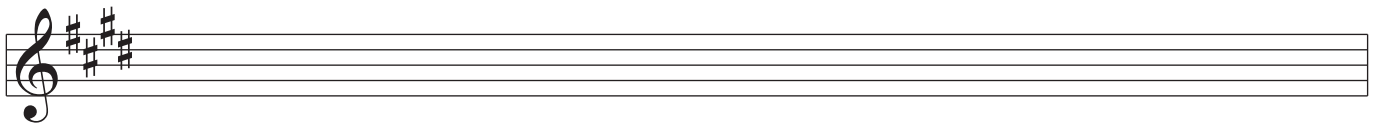


Nakai Tablature for Native American Flute

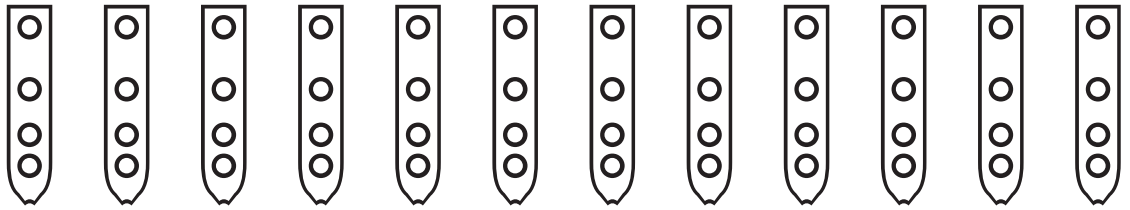
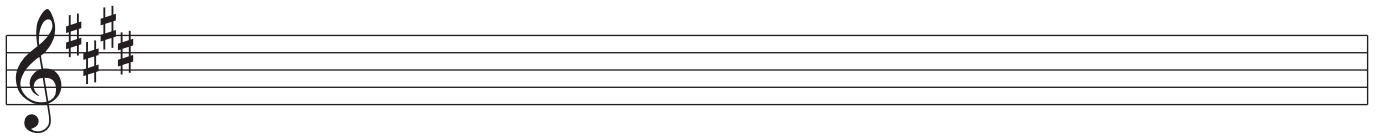
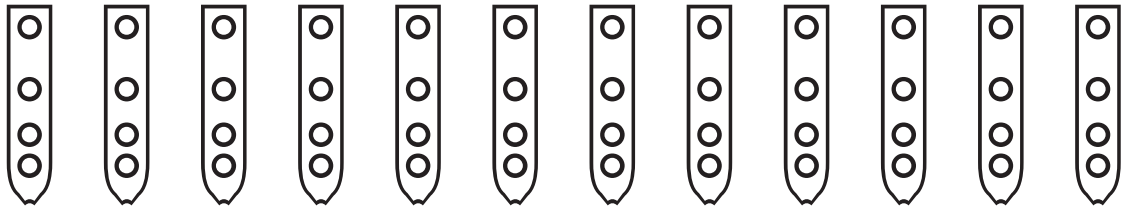
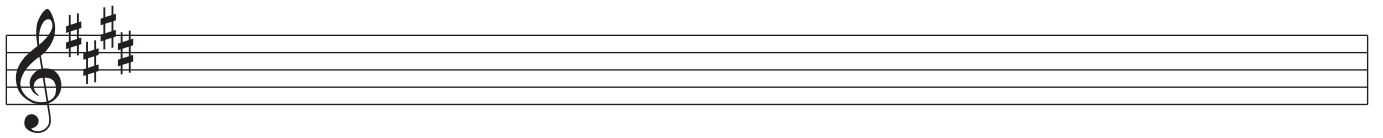
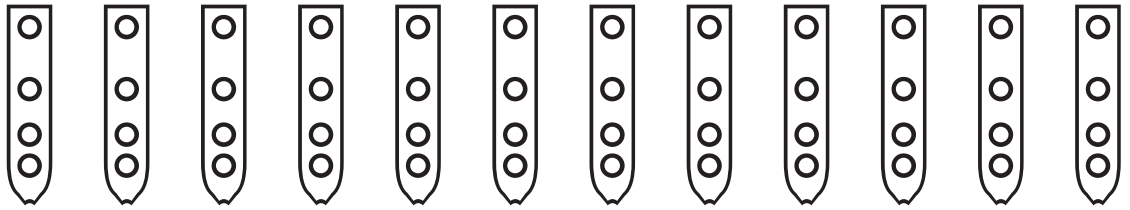
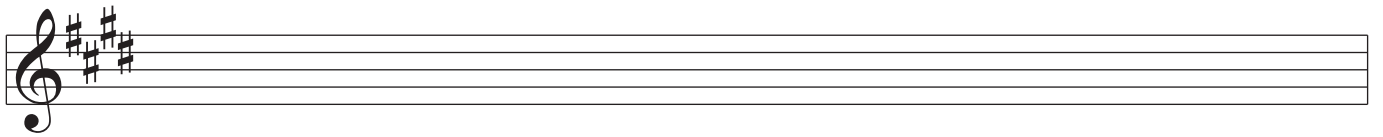
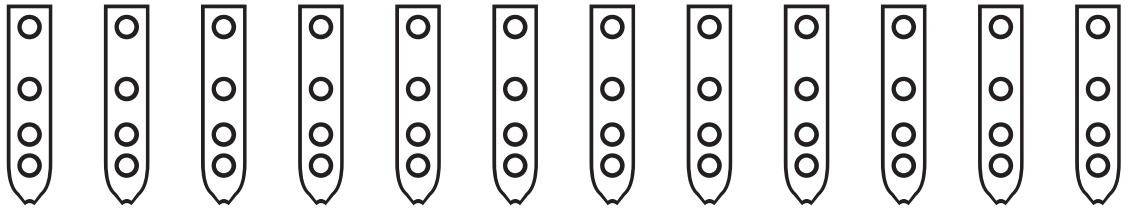
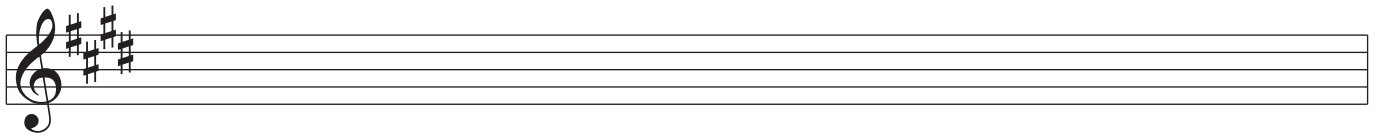
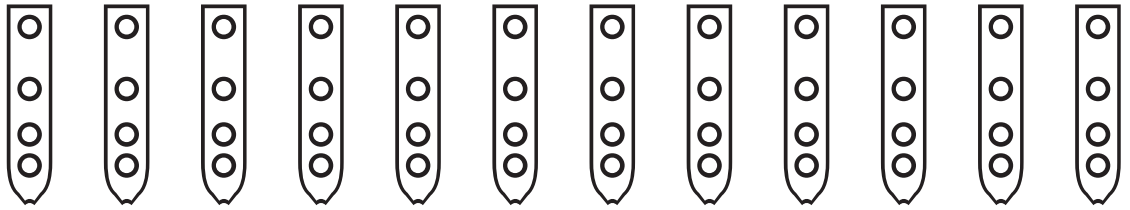
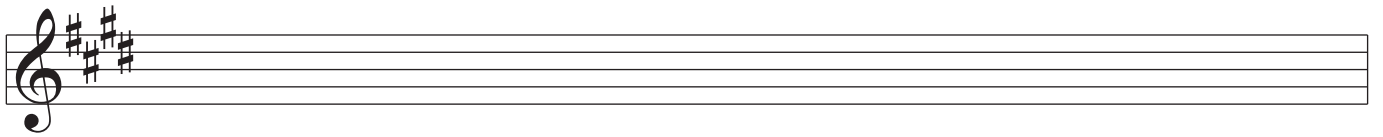


Nakai Tablature for Native American Flute

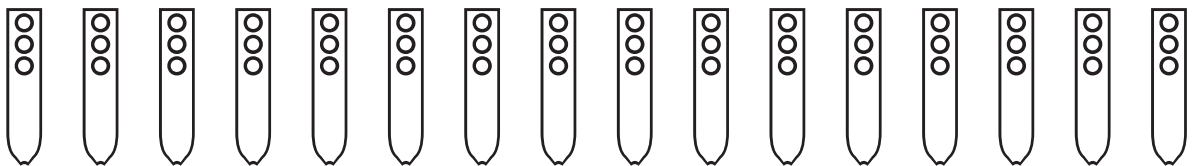
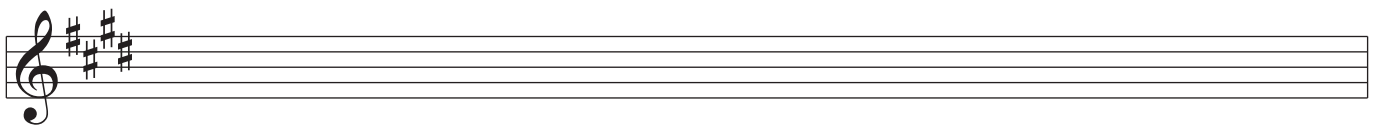
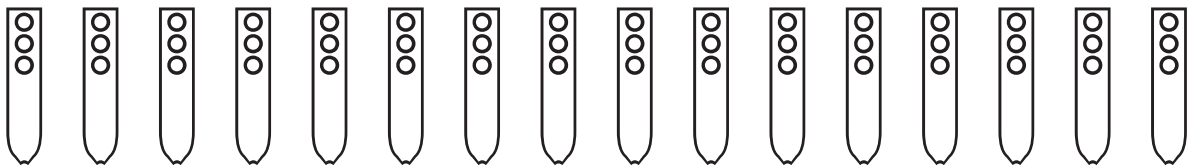
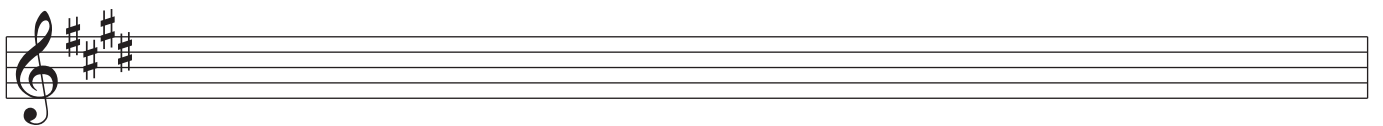
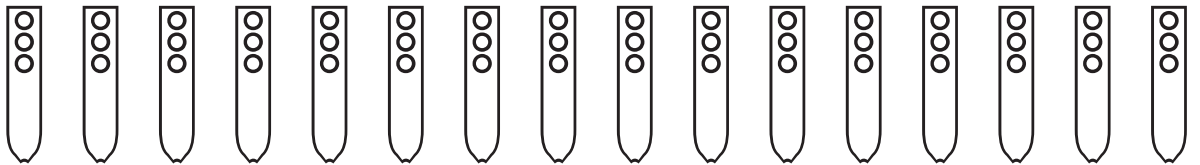
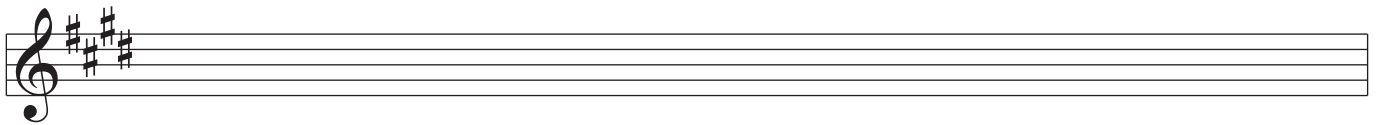
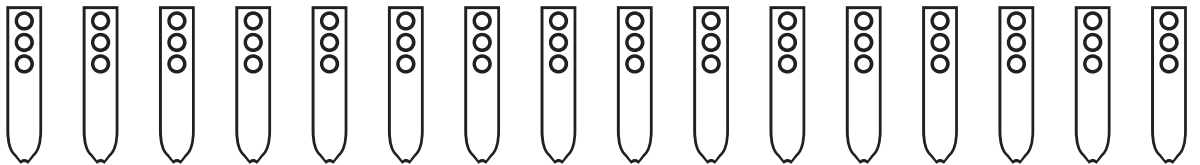
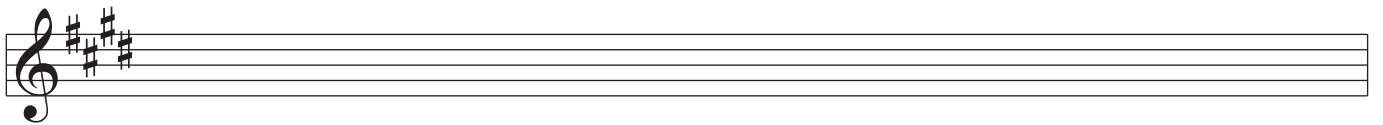
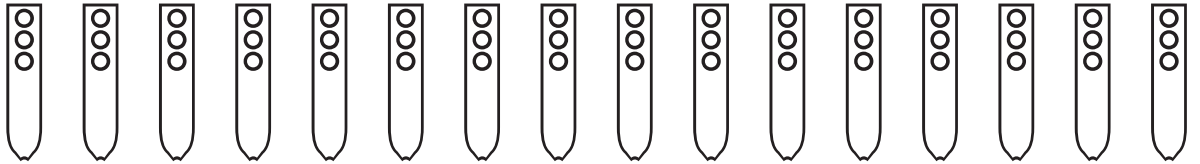
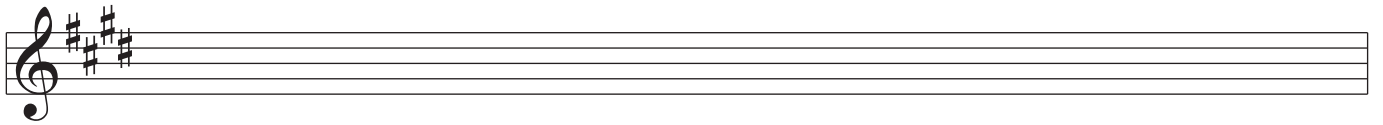


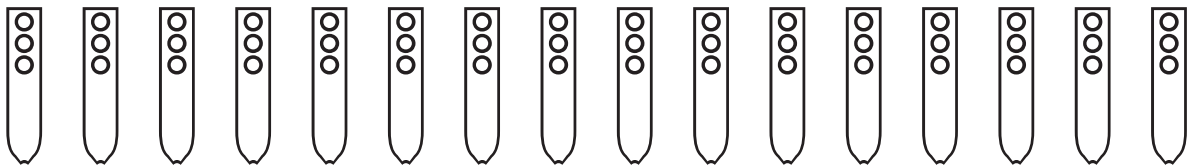
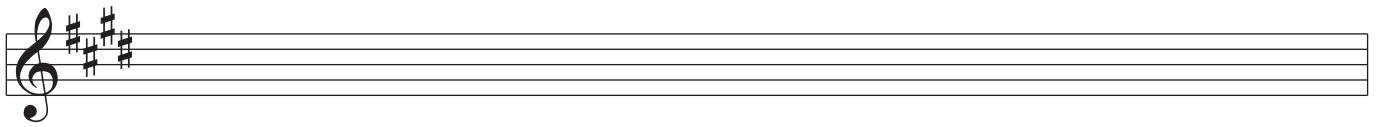
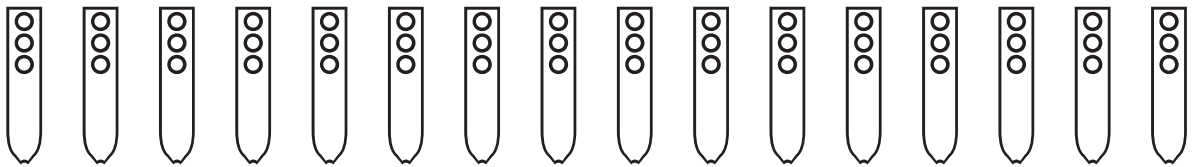
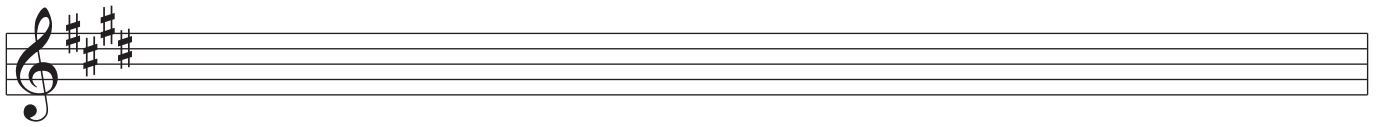
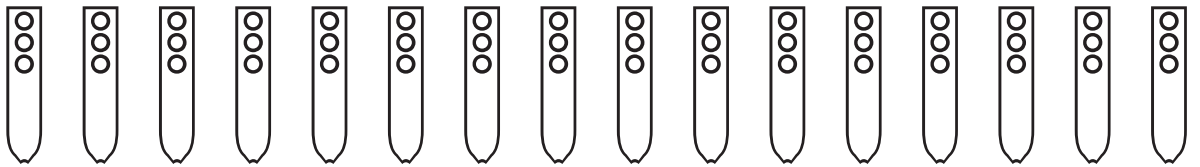
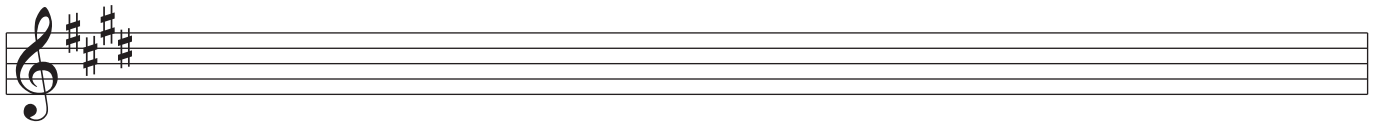
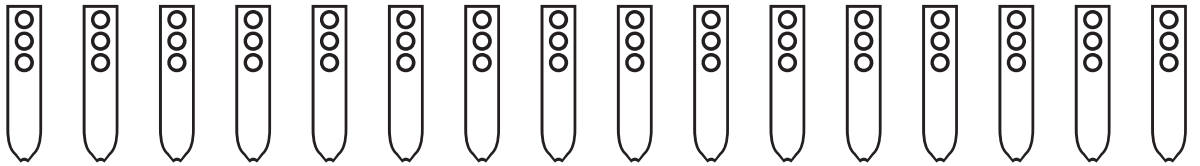
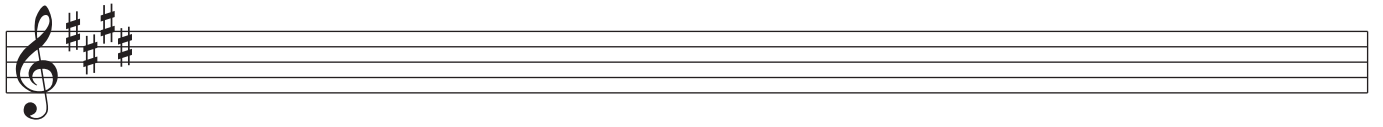
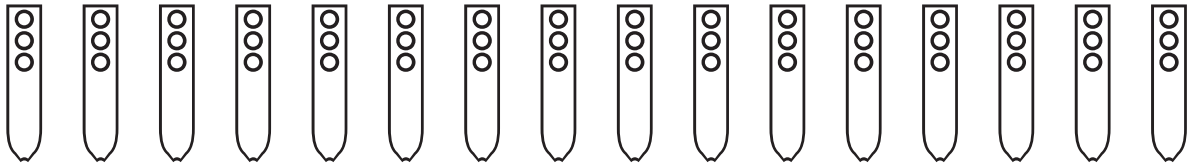
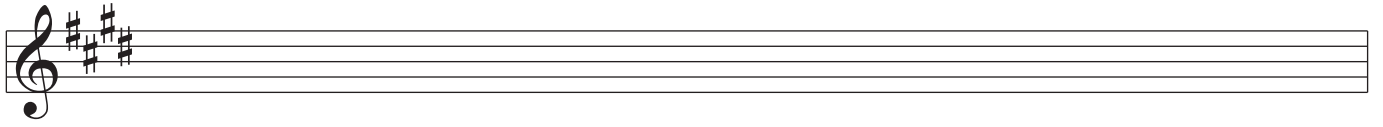
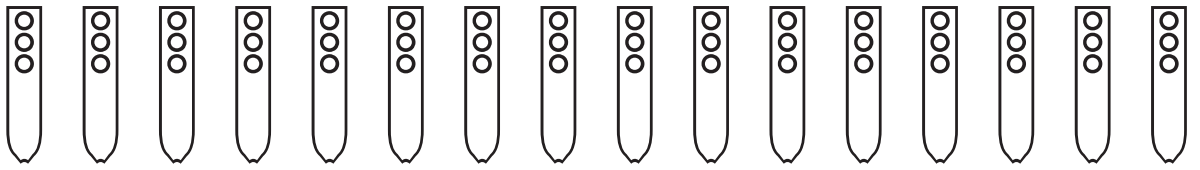
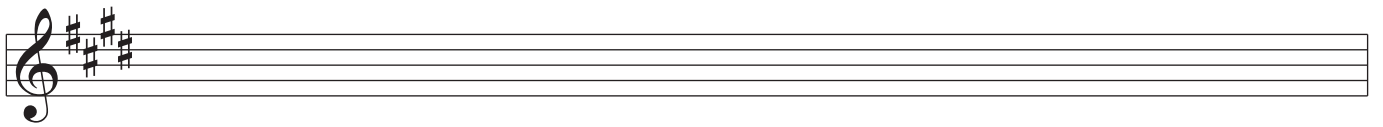


Nakai Tablature for Native American Flute



Nakai Tablature for Native American Flute





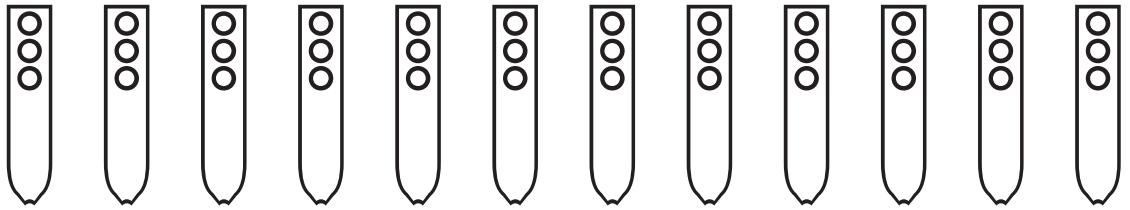
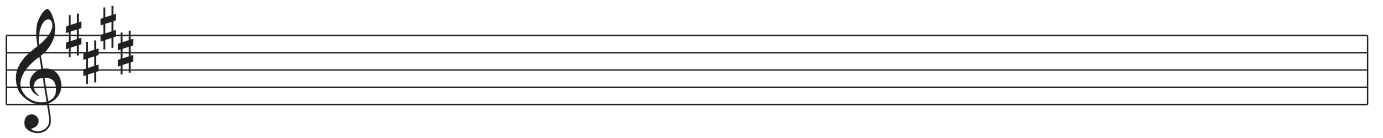
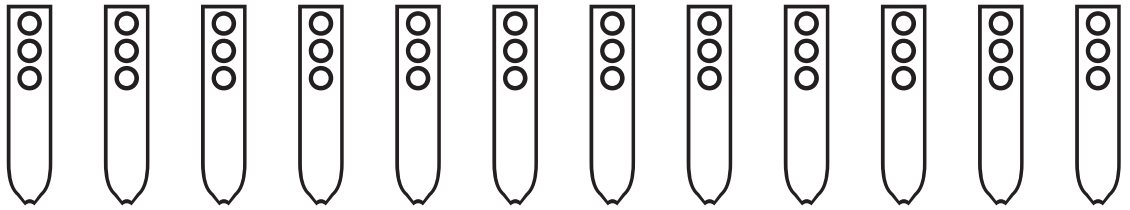
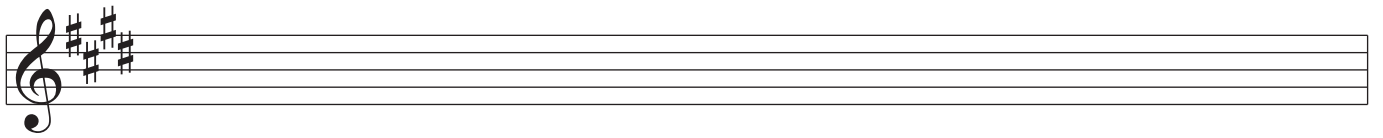
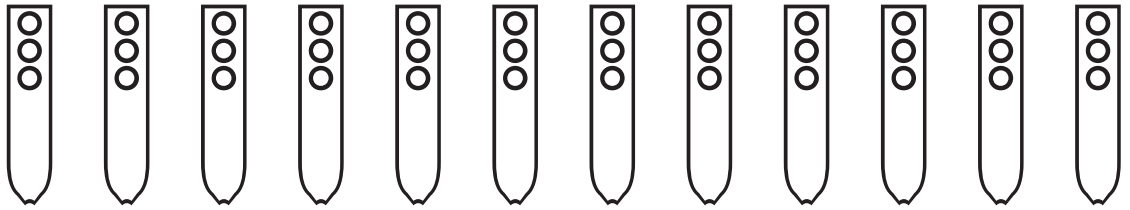
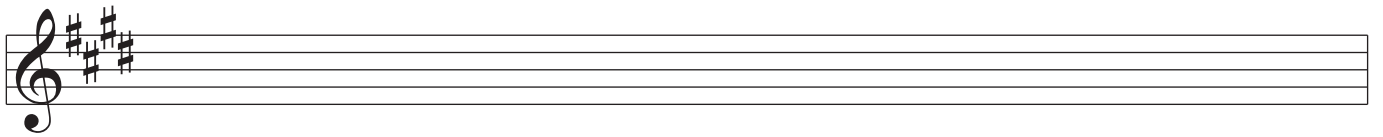
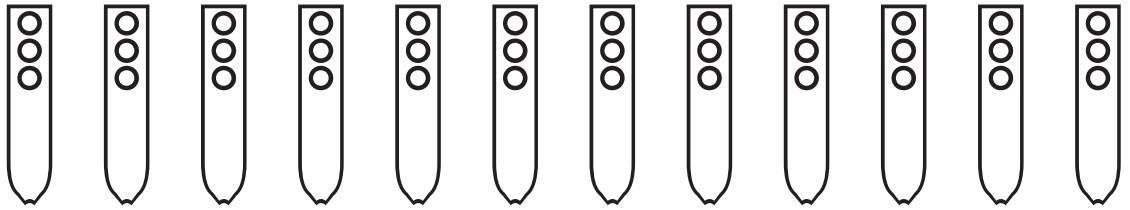
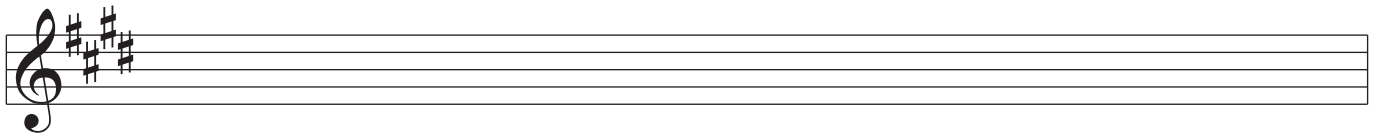
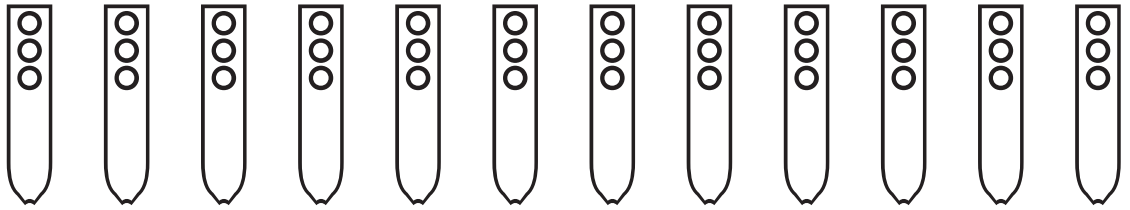
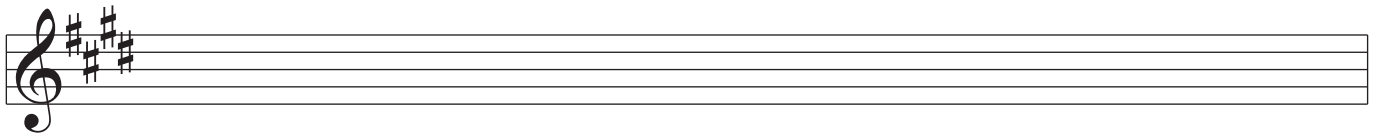
Nakai Tablature for Native American Flute

A musical staff with a treble clef and a key signature of three sharps (F#, C#, G#). Below the staff are 12 vertical flute diagrams, each with two circles representing finger holes.

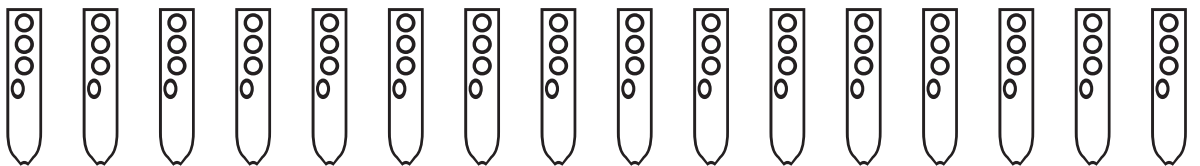
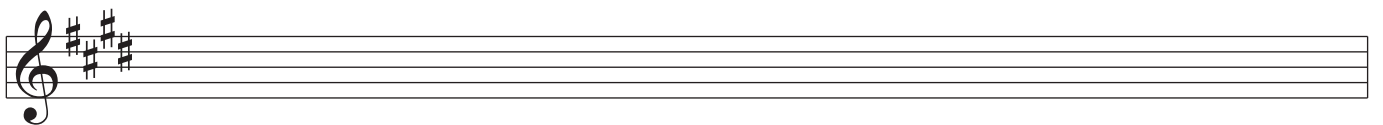
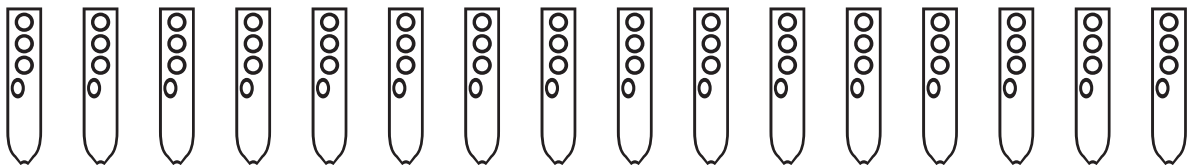
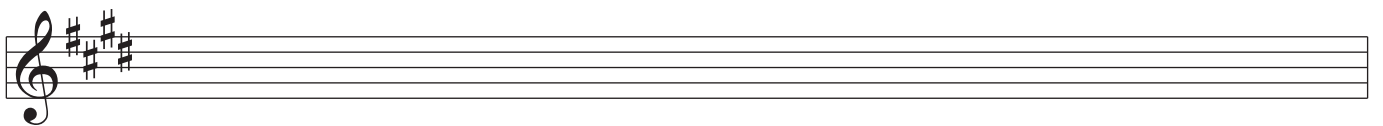
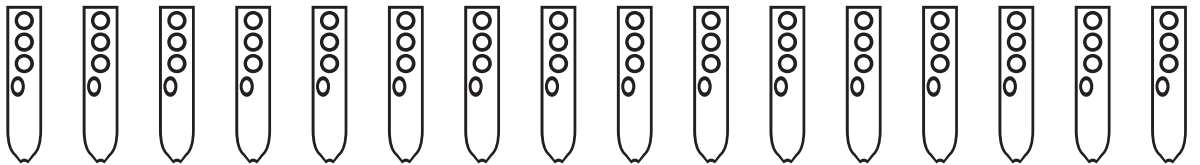
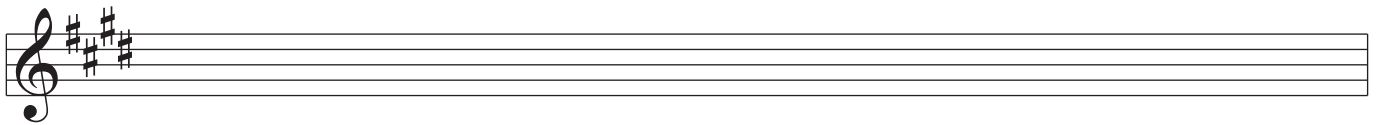
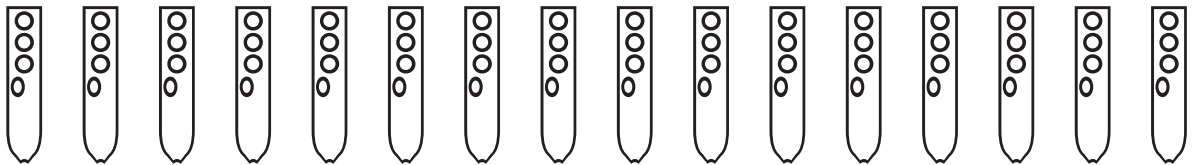
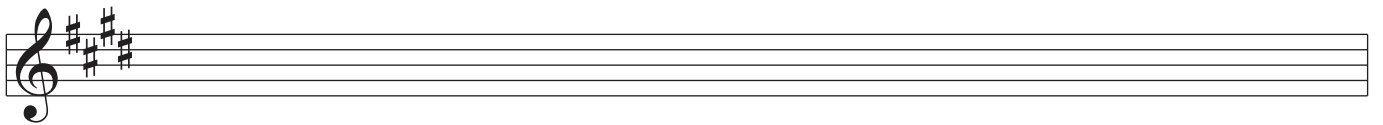
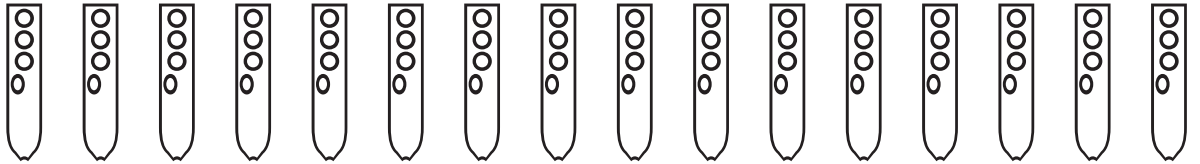
A musical staff with a treble clef and a key signature of three sharps (F#, C#, G#). Below the staff are 12 vertical flute diagrams, each with two circles representing finger holes.

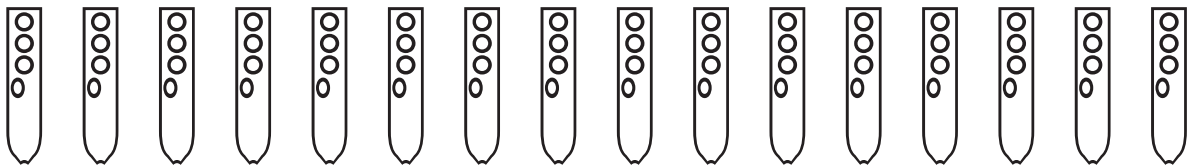
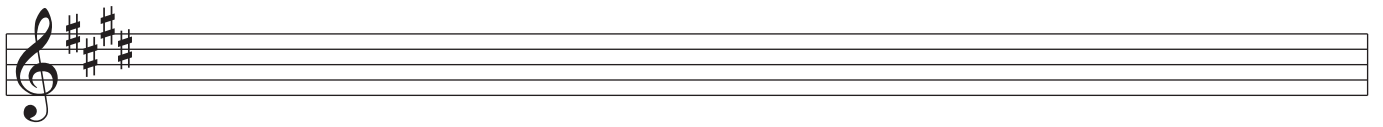
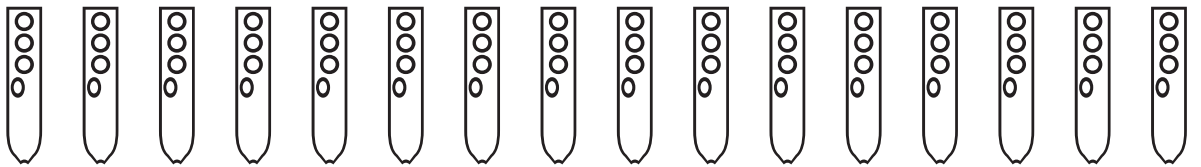
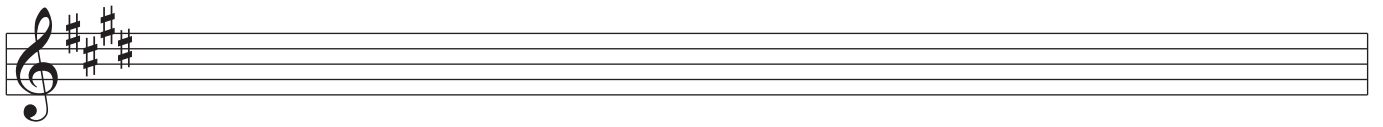
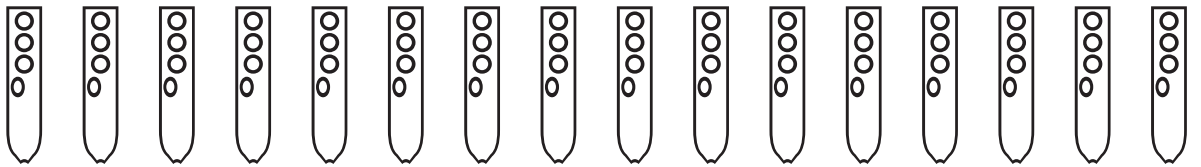
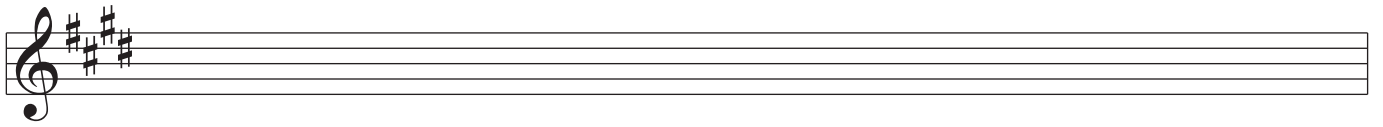
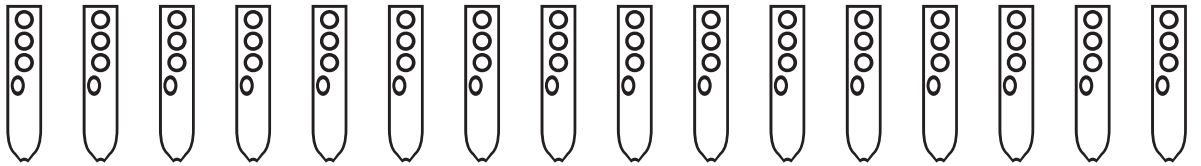
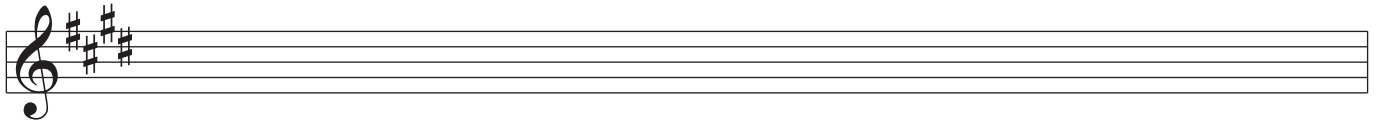
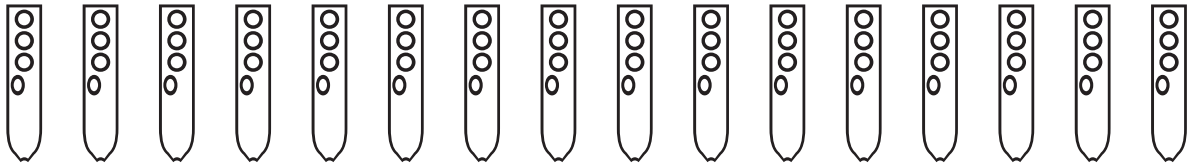
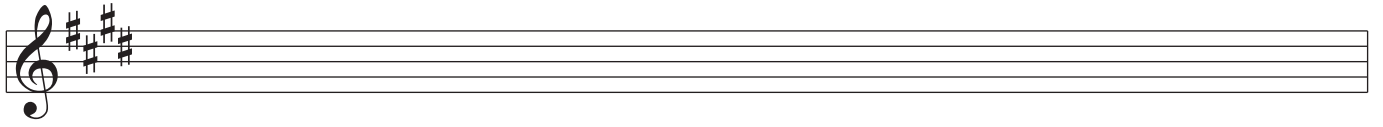
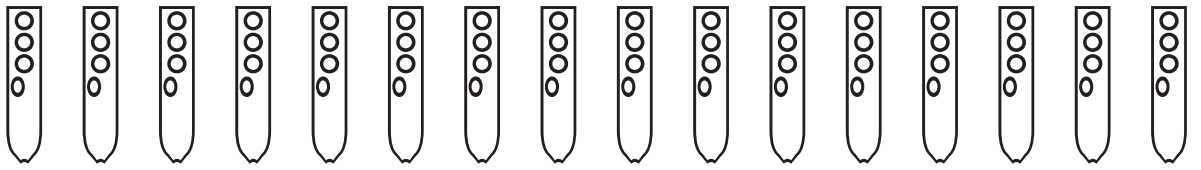
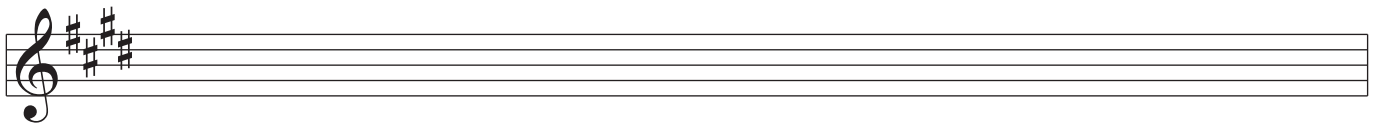
A musical staff with a treble clef and a key signature of three sharps (F#, C#, G#). Below the staff are 12 vertical flute diagrams, each with two circles representing finger holes.

A musical staff with a treble clef and a key signature of three sharps (F#, C#, G#). Below the staff are 12 vertical flute diagrams, each with two circles representing finger holes.



Nakai Tablature for Native American Flute





Nakai Tablature for Native American Flute

